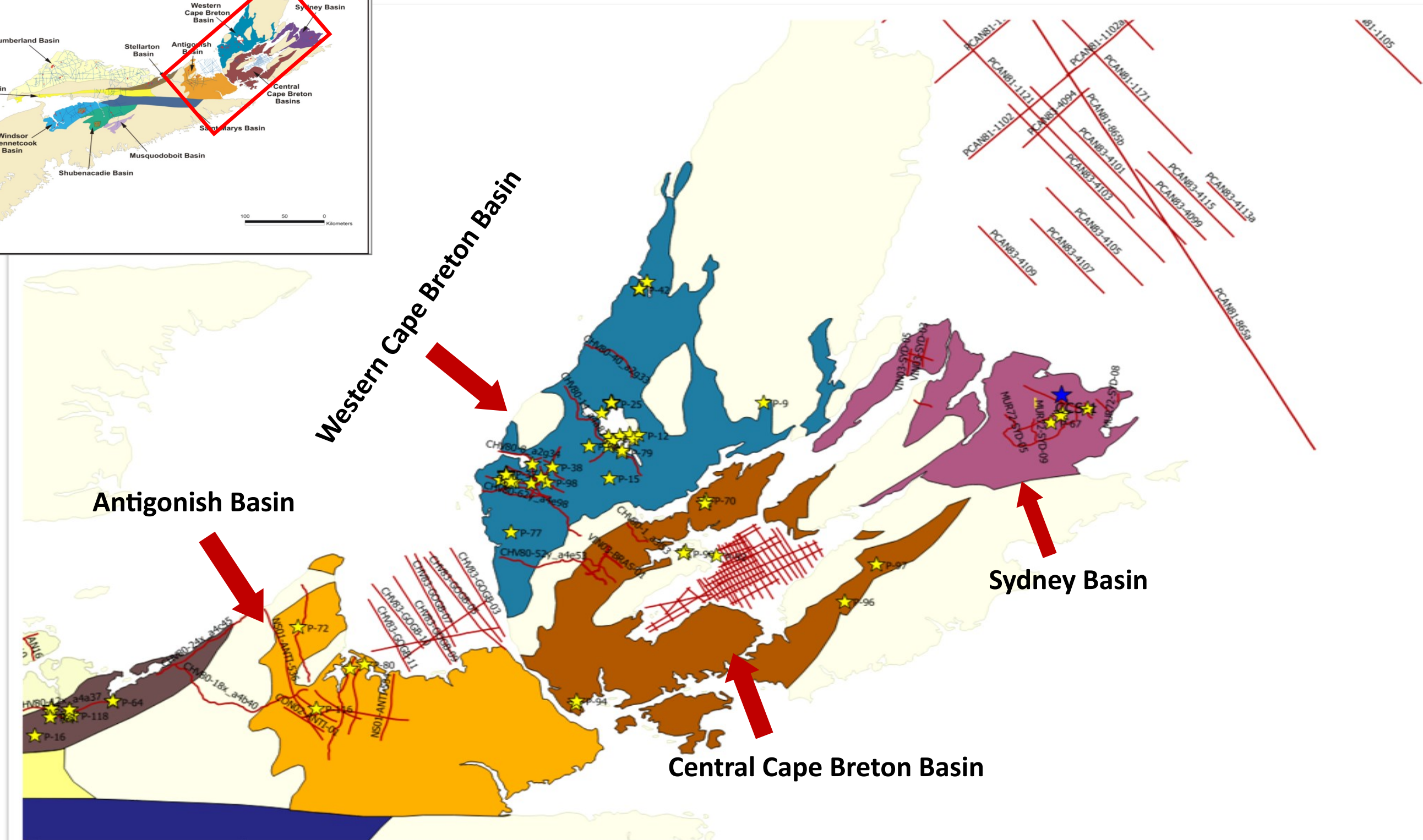


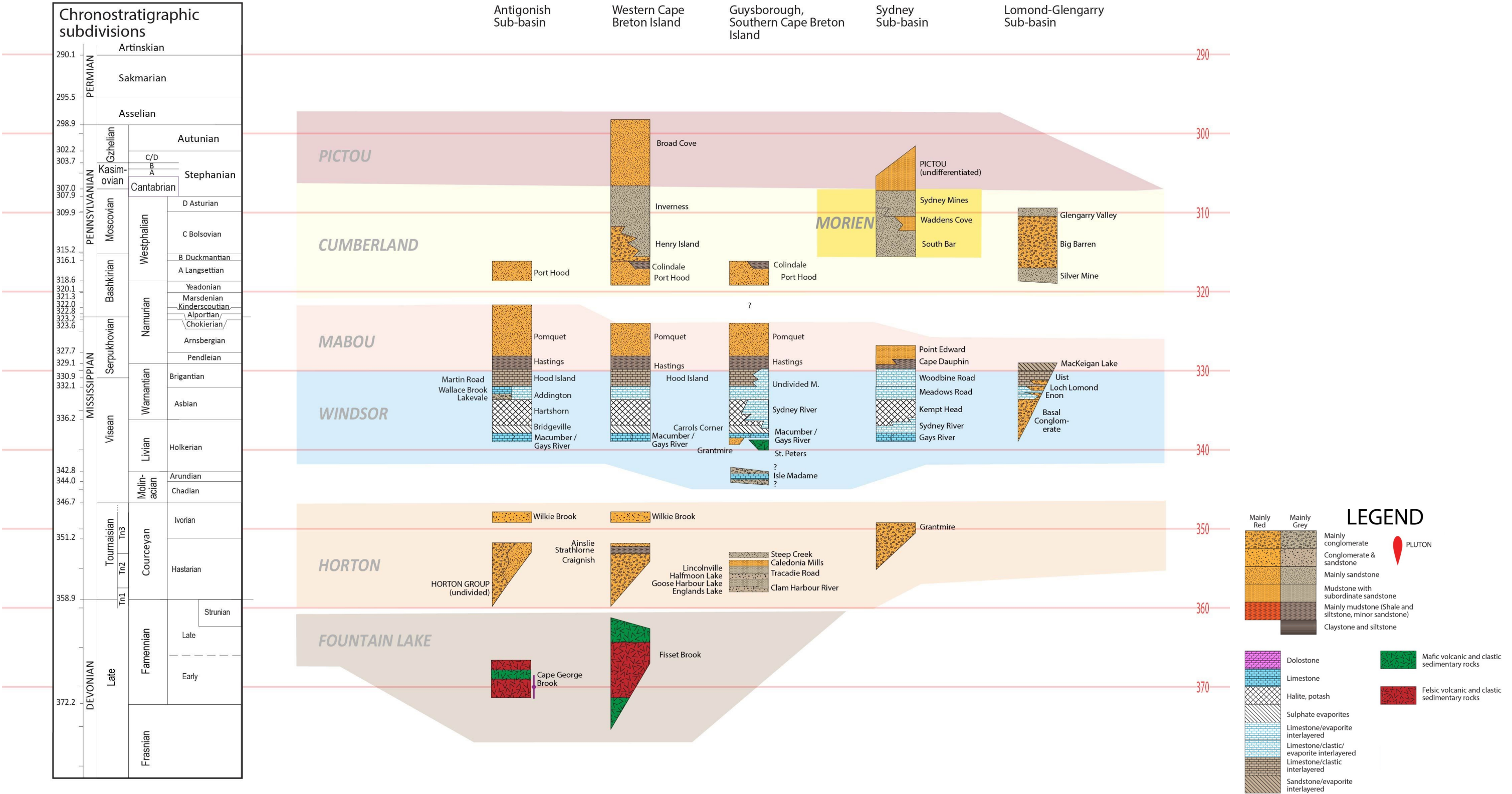
# **NSDOE Open File Report 2017-08**

## **Schedule of Petroleum Wells, onshore Nova Scotia**

### **Part 1: Cape Breton Region**



## Location Map of Cape Breton Region



**Stratigraphic Column of Cape Breton Region** (Waldron, 2017)

Well ID	Well Name	Company	Spud Date	KB (m)	Total Depth (m)	Latitude   Longitude	Basin	Status Description
P-88	Brador Anchutz Hole #1	Brad d'Or Oil Company Ltd.	July 27, 1976	9.14	1,044.6	45°39'10.86" N 61°53'01.37" W	Antigonish Basin	Plugged and Abandoned
P-116	UPCI Beech Hill #1	Vintage Petroleum	July 21, 2003	71	1044.5	45°34'23.925" N 61°58'22.167" W	Antigonish Basin	Plugged and Abandoned
P-90	Bras d'Or #1	Chevron Standard Ltd./ Irving Oil Ltd.	September 21, 1979	13	216.0	45°52'30" N 61°00'20" W	Central Cape Breton Basin	Plugged and Abandoned
P-91	Bras d'Or #2	Chevron Standard Ltd./ Irving Oil Ltd.	October 3, 1979	15.1	375.0	45°52'45" N 61°00'05" W	Central Cape Breton Basin	Plugged and Abandoned
P-92	Malagawatch #1	Chevron Standard Ltd./ Irving Oil Ltd.	October 31, 1979	8.03	948.0	45°52'05" N 60°55'18" W	Central Cape Breton Basin	Plugged and Abandoned
P-84	Birch Grove #1	Murphy Oil Company Ltd.	February 8, 1968	49.7	1,343.6	46°08'42.40" N 59°56'05.04" W	Sydeny Basin	Plugged and Abandoned
P-98	Irving Chevron Mull River #1	Chevron Canada Resources Ltd.	May 30, 1988	195.3	1,502.0	46°01'25.9" N 61°21'40" W	Western Cape Breton Basin	Plugged and Abandoned

**Petroleum Wells with LAS in Central Cape Breton, Western Cape Breton, Antigonish & Sydney basins**

Well ID	Well Name	Company	Spud Date	KB (m)	Total Depth (m)	Latitude Longitude	Basin	Status Description
P-72	NSDM Record # 1505	Nova Scotia Centre for Geological Science	July 13, 1949	90	217.0	45°44'17" N±30" 62°01'05" W±45"	Antigonish Basin	Plugged and Abandoned
P-80	Lura #1; NSDM Record # 2671	Lura Corporation Ltd.	October 4, 1958	25	607.5	45°39'42" N±10" 61°50'50" W±15"	Antigonish Basin	Plugged and Abandoned
P-68	NSDM Record # 1235	Little Narrows Petroleum Company	November 26, 1946	53	99.7	45°58'29" N±5" 60°56'50" W±10"	Central Cape Breton Basin	Plugged and Abandoned
P-69	Little Narrows No. 1; NSDM Record # 1236	Little Narrows Petroleum Company	November 26, 1946	53	492.0	45°58'29" N±5" 60°56'50" W±10"	Central Cape Breton Basin	Plugged and Abandoned
P-70	NSDM Record # 1452, No.2	Little Narrows Petroleum Company	October 27, 1947	61	610.8	45°58'56" N±5" 60°56'45" W±10"	Central Cape Breton Basin	Plugged and Abandoned
P-89	Bras d'Or #3A-78	Chevron Standard Ltd.	July 23, 1978	13	182.0	45°52'30" N 61°00'20" W	Central Cape Breton Basin	Plugged and Abandoned
P-94	Port Malcolm	CORKAN Engineering of Canada Ltd.	September 13, 1983	14	1,091.8	45°34'49.89" N 61°17'43.82" W	Central Cape Breton Basin	Plugged and Abandoned
P-95	Bear Island	CORKAN Engineering of Canada Ltd.	September 30, 1983	17	414.2	45°34'21.64" N 61°17'54.07" W	Central Cape Breton Basin	Plugged and Abandoned
P-96	Loch Lomond	CORKAN Engineering of Canada Ltd.	October 28, 1983	62	246.9	45°46'11.24" N 60°35'26.89" W	Central Cape Breton Basin	Plugged and Abandoned
P-97	North Glen	CORKAN Engineering of Canada Ltd.	October 27, 1983	87	1,255.8	45°50'31.59" N 60°30'59.92" W	Central Cape Breton Basin	Plugged and Abandoned
P-65	NSDM Record # 1096; Borehole #1	Sydney Petroleum Company	September 1, 1946	30	77.0	46°07'55" N±6" 60°00'18" W±9"	Sydney Basin	Plugged and Abandoned
P-66	NSDM Record # 1097; Borehole #2	Sydney Petroleum Company	September 1, 1946	0	71.0	46°08'12" N±15" 59°59'58" W±18"	Sydney Basin	Plugged and Abandoned
P-67	NSDM Record # 1098; Borehole #3	Sydney Petroleum Company	September 1, 1946	60	25.0	46°07'06" N±8" 60°01'55" W±10"	Sydney Basin	Plugged and Abandoned
P-1	Unknown	Lake Ainslie Pioneer Oil & Salt Co.	Summer 1869	65	244.5	46°06'22" N±1' 61°11'00" W±1'	Western Cape Breton Basin	Plugged and Abandoned
P-2	Unknown	Lake Ainslie Pioneer Oil & Salt Co.	1869	65	487.5	46°06'22" N±1' 61°11'00" W±1'	Western Cape Breton Basin	Plugged and Abandoned
P-3	NSDM Record No. 11	Lake Ainslie Pioneer Oil & Salt Co.	1874	65	198.1	46°06'22" N±1' 61°11'00" W±1'	Western Cape Breton Basin	Plugged and Abandoned
P-4	NSDM Record No. 12	Lake Ainslie Pioneer Oil & Salt Co.	1874	65	274.3	46°06'22" N±1' 61°11'00" W±1'	Western Cape Breton Basin	Plugged and Abandoned
P-5	Unknown	Lake Ainslie Pioneer Oil & Salt Co.	1875	65	335.3	46°06'22" N±1' 61°11'00" W±1'	Western Cape Breton Basin	Plugged and Abandoned
P-6	Unknown	Lake Ainslie Pioneer Oil & Salt Co.	May 1877	65	Unknown	46°06'22" N±1' 61°11'00" W±1'	Western Cape Breton Basin	Plugged and Abandoned

## Petroleum Wells without LAS in Central Cape Breton, Western Cape Breton, Antigonish & Sydney basins



Well ID	Well Name	Company	Spud Date	KB (m)	Total Depth (m)	Latitude   Longitude	Basin	Status Description
P-7	Unknown	Unknown	Autumn 1877	65	Unknown	46°06'22" N±1'	Western Cape Breton Basin	Plugged and Abandoned
P-9	Unknown	Victoria Oil Co.	1880	57	152.4	46°10'36" N±43"	Western Cape Breton Basin	Plugged and Abandoned
P-10	Unknown	Unknown	pre-1897	84	Unknown	46°06'30" N±1'	Western Cape Breton Basin	Plugged and Abandoned
P-11	Unknown	Unknown	pre-1897	62	Unknown	46°07'13" N±30"	Western Cape Breton Basin	Plugged and Abandoned
P-12	Unknown	Unknown	1897	253	Unknown	46°07' N±10'	Western Cape Breton Basin	Plugged and Abandoned
P-13	Unknown	Unknown	Approx. April 20,1898	49	682.8	46°07' N±10'	Western Cape Breton Basin	Plugged and Abandoned
P-15	NSDM Record No. 88	Unknown	Summer 1902	204	335.3	46°01'51" N±1'	Western Cape Breton Basin	Plugged and Abandoned
P-21	Lake Ainslie No. 1	Maritime Oil & Gas Company Ltd.	1912	119	243.8	46°11'03" N±20"	Western Cape Breton Basin	Plugged and Abandoned
P-22	Lake Ainslie No. 2	Maritime Oil & Gas Company Ltd.	1912	129	491.3	46°11'07" N±20"	Western Cape Breton Basin	Plugged and Abandoned
P-23	Lake Ainslie No. 3	Maritime Oil & Gas Company Ltd.	1912-1914	222	341.4	46°11'05" N±20"	Western Cape Breton Basin	Plugged and Abandoned
P-24	Lake Ainslie No. 4	Maritime Oil & Gas Company Ltd.	1912-1914	101	335.3	46°11'04" N±20"	Western Cape Breton Basin	Plugged and Abandoned
P-25	Lake Ainslie No. 5	Maritime Oil & Gas Company Ltd.	1912-1914	81	265.2	46°10'55" N±20"	Western Cape Breton Basin	Plugged and Abandoned
P-26	Lake Ainslie No. 6	Maritime Oil & Gas Company Ltd.	1912-1914	81	No record - prog. 1677	46°10'55" N±20" 61°11'07" W±30"	Western Cape Breton Basin	Plugged and Abandoned
P-27	Unknown	Eastern Gulf Oil Company	1926	84	274.3	46°09'48" N±10"	Western Cape Breton Basin	Plugged and Abandoned
P-28	NSDM Record No. 484, Borehole #1	Gulf Oil Company	June 17, 1926	16	214.0	46°01'35" N±10"	Western Cape Breton Basin	Plugged and Abandoned
P-29	NSDM Record No. 485, Borehole #2	Eastern Gulf Oil Company	September 18, 1926	16	177.4	46°01'36" N±10"	Western Cape Breton Basin	Plugged and Abandoned
P-30	NSDM Record No. 505, Borehole #1	Gulf Oil Company	September 11, 1926	73	23.32	46°02'32" N±15"	Western Cape Breton Basin	Plugged and Abandoned
P-31	NSDM Record No. 506, Borehole #2	Eastern Gulf Oil Company	September 22, 1926	71	65.5	46°02'34" N±15"	Western Cape Breton Basin	Plugged and Abandoned
P-32	NSDM Record No. 524, Borehole #3	Eastern Gulf Oil Company	October 13, 1926	78	33.5	46°02'36" N±15"	Western Cape Breton Basin	Plugged and Abandoned
P-33	NSDM Record No. 525, Borehole #4	Eastern Gulf Oil Company	October 23, 1926	78	67.1	46°02'36" N±15"	Western Cape Breton Basin	Plugged and Abandoned
P-34	NSDM Record No. 526, Borehole #5	Eastern Gulf Oil Company	November 5, 1926	65	53.9	46°02'29" N±15"	Western Cape Breton Basin	Plugged and Abandoned

## Petroleum Wells without LAS in Central Cape Breton, Western Cape Breton, Antigonish & Sydney basins (Cont.)

Well ID	Well Name	Company	Spud Date	KB (m)	Total Depth (m)	Latitude   Longitude	Basin	Status Description
P-35	NSDM Record No. 527, Borehole #6	Eastern Gulf Oil Company	November 13, 1926	78	197.5	46°02'35" N±10" 61°27'57" W±10"	Western Cape Breton Basin	Plugged and Abandoned
P-36	NSDM Record No. 528, Borehole #7	Eastern Gulf Oil Company	March 6, 1927	29	182.9	46°01'40" N±15" 61°26'46" W±15"	Western Cape Breton Basin	Plugged and Abandoned
P-37	NSDM Record No. 529, Borehole #8	Eastern Gulf Oil Company	April 1, 1927	85	202.4	42°02'39" N±15" 61°27'57" W±15"	Western Cape Breton Basin	Plugged and Abandoned
P-38	NSDM Record No. 530, Borehole #9	Eastern Gulf Oil Company	May 5, 1927	84	201.5	42°03'21" N±30" 61°20'45" W±15"	Western Cape Breton Basin	Plugged and Abandoned
P-39	NSDM Record No. 531, Borehole #1	Eastern Gulf Oil Company	June 11, 1927	108	24.7	46°24'50" N±1" 61°06'15" W±1"	Western Cape Breton Basin	Plugged and Abandoned
P-40	NSDM Record No. 532, Borehole #2	Eastern Gulf Oil Company	June 25, 1927	105	217.0	46°24'48" N±1" 61°06'15" W±1"	Western Cape Breton Basin	Plugged and Abandoned
P-41	NSDM Record No. 533, Borehole #3	Eastern Gulf Oil Company	August 5, 1927	92	57.6	46°24'46" N±1" 61°06'15" W±1"	Western Cape Breton Basin	Plugged and Abandoned
P-42	NSDM Record No. 534, Borehole #4	Eastern Gulf Oil Company	August 30, 1927	92	64.0	46°24'44" N±1" 61°06'15" W±1"	Western Cape Breton Basin	Plugged and Abandoned
P-43	NSDM Record No. 535, Borehole #5	Eastern Gulf Oil Company	September 15, 1927	15	109.7	46°25'35" N±30" 61°05'04" W±40"	Western Cape Breton Basin	Plugged and Abandoned
P-56	McIssac Gas Well, Well No. 5	Unknown	Around 1938	121	518.2	46°05'42" N±20" 61°11'48" W±20"	Western Cape Breton Basin	Plugged and Abandoned
P-57	Mac #1	Lion Oil Refining Company (from Eldorado, Arkansas)	1944	48	1701.0	46°01'49" N±10" 61°27'37" W±15"	Western Cape Breton Basin	Plugged and Abandoned
P-58	Mary #1	Lion Oil Refining Company (from Eldorado, Arkansas)	1944	76	2,094.0	46°02'06" N±15" 61°28'06" W±22"	Western Cape Breton Basin	Plugged and Abandoned
P-61	Sunoco #1	Sun Oil Company (of Philadelphia)	Spring 1945	9	1981	45°47'05" N±10" 64°13'39" W±15"	Western Cape Breton Basin	Plugged and Abandoned
P-62	Sunoco #1A (Nappan No.1A)	Sun Oil Company (of Philadelphia)	April 15, 1946	9	3,506.0	45°47'05" N±10" 64°13'39" W±15"	Western Cape Breton Basin	Plugged and Abandoned
P-71	Hay River; NSDM Record # 1453	Little Narrows Petroleum Company	August 9, 1948	109	211.5	46°05'49" N±8" 61°14'53" W±10"	Western Cape Breton Basin	Plugged and Abandoned
P-74	Inverness #1	Imperial Oil Limited	August 26, 1958	24	155.5	46°03'42" N±10" 61°23'48" W±15"	Western Cape Breton Basin	Plugged and Abandoned
P-75	Inverness #2	Imperial Oil Limited	August 26, 1958	143	79.3	46°02'06" N±12" 61°22'35" W±17"	Western Cape Breton Basin	Plugged and Abandoned
P-76	Inverness #3	Imperial Oil Limited	August 26, 1958	49	146.3	46°06'54" N±10" 61°11'46" W±12"	Western Cape Breton Basin	Plugged and Abandoned
P-77	Inverness #4	Imperial Oil Limited	August 26, 1958	26	143.3	45°55'30" N±1" 61°27'24" W±1"	Western Cape Breton Basin	Plugged and Abandoned
P-78	Inverness #5	Imperial Oil Limited	August 26, 1958	59	30.5	46°05'12" N±10" 61°09'43" W±15"	Western Cape Breton Basin	Plugged and Abandoned
P-79	Inverness #6	Imperial Oil Limited	August 26, 1958	86	51.8	46°04'58" N±10" 61°09'39" W±15"	Western Cape Breton Basin	Plugged and Abandoned
P-81	Mabou #1	Imperial Oil Limited	October 24, 1959	123	1,568.2	46°01'25" N±12" 61°24'03" W±25"	Western Cape Breton Basin	Plugged and Abandoned
P-82	Port Hood #1	Imperial Oil Company Limited	January 16, 1960	124	2,999.2	46°01'55" N±12" 61°28'57" W±25"	Western Cape Breton Basin	Plugged and Abandoned

**Petroleum Wells without LAS in Central Cape Breton, Western Cape Breton, Antigonish & Sydney basins (Cont.)**

Well ID: P-84

Well Name: Birch Grove #1

Well Type: Vertical well

Spud Date: Feb. 1968

Status: Plugged and Abandoned

Operator: Murphy Oil Company Ltd

Core: 0-1343.6m(cutting)

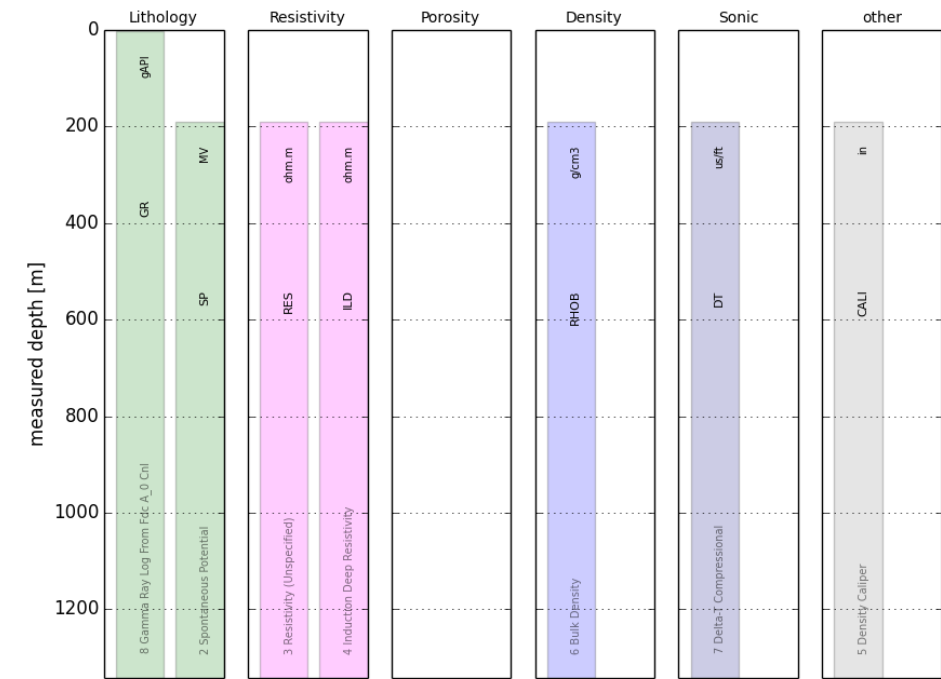
Surface Location: 736786(Easting); 5114736(Northing)

Coordinate Reference System: NAD 83/UTM Zone 20

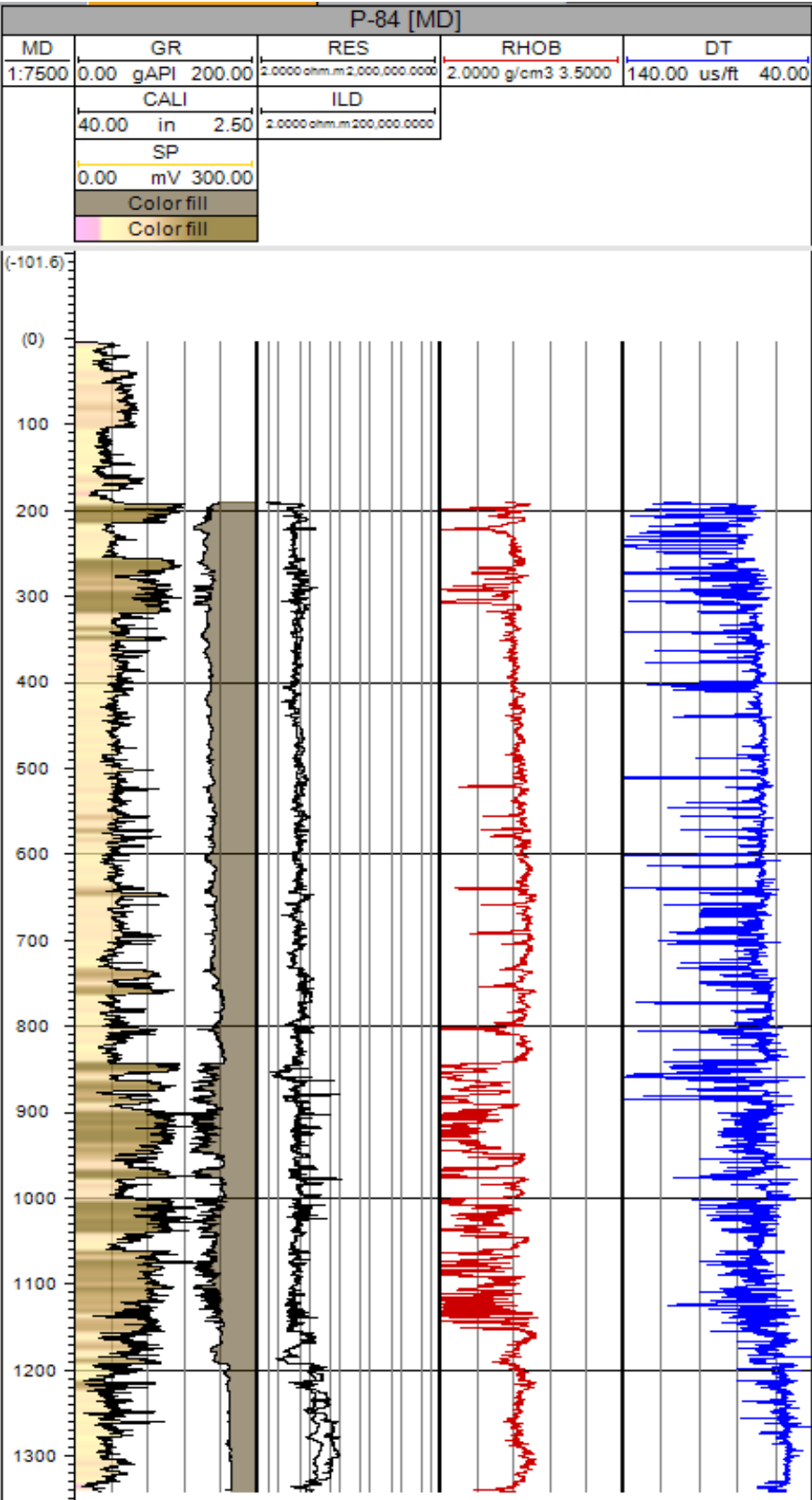
KB:49.7 m

TD: 1343.6m

Inventory of well logs



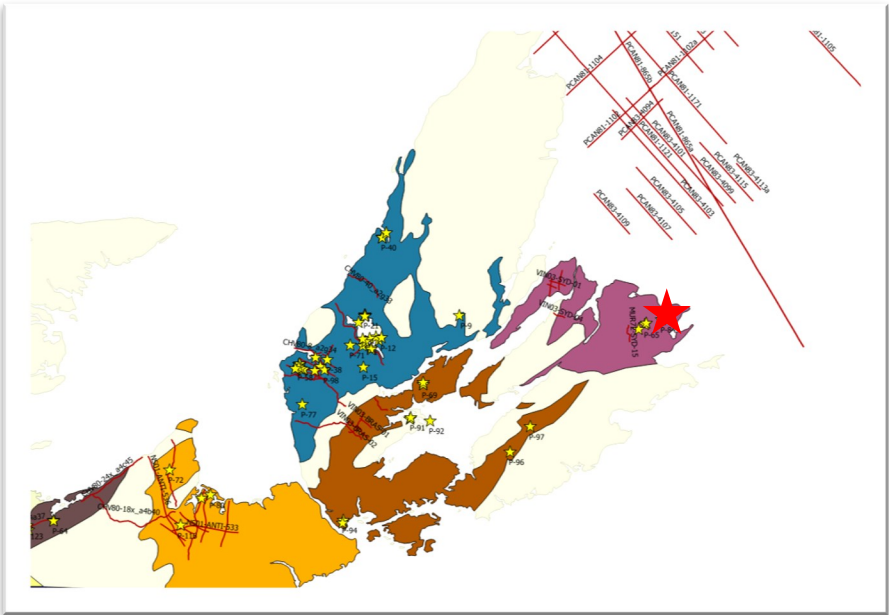
Composite logs



Nova Scotia Onshore Petroleum Atlas

Formation Top

Formation/Member	Top (m)
South Bar Formation	438.9
Mabou Group	844.3
Grantmire Formation	1191.8





Well ID: P-88

Well Name: Brador Anchutz Hole #1

Well Type: Vertical well

Spud Date: Jul. 1976

Status: Plugged and Abandoned

Operator: Brad d’Or Oil Company Ltd

Core: 3-1044.34m(cutting)

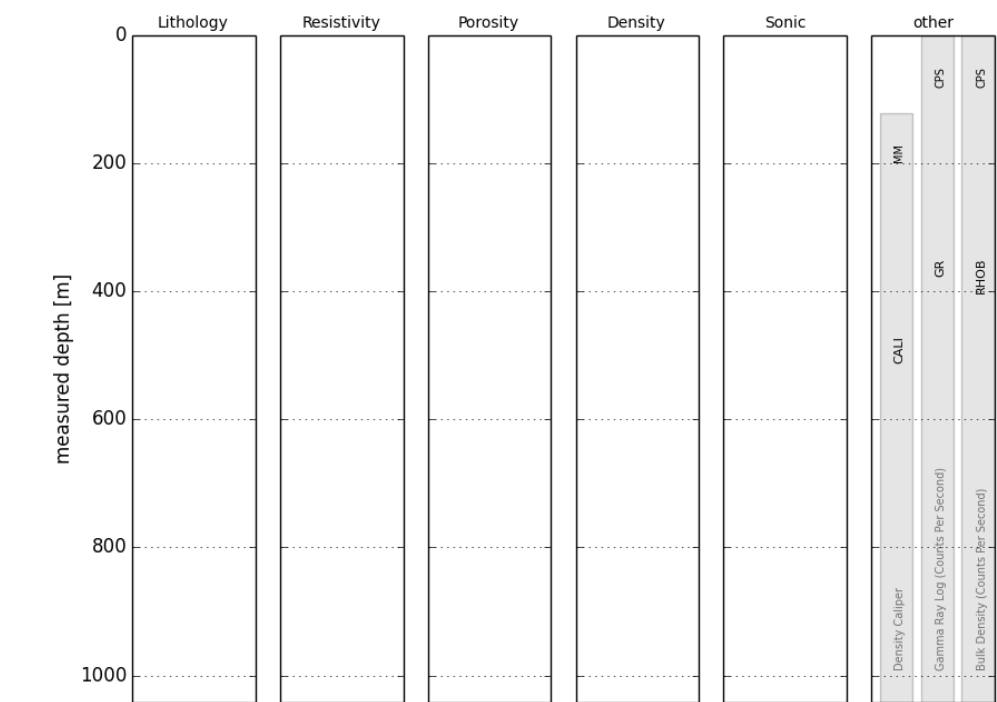
Surface Location: 587039(Easting); 5056116(Northing)

Coordinate Reference System: NAD 83/UTM Zone 20

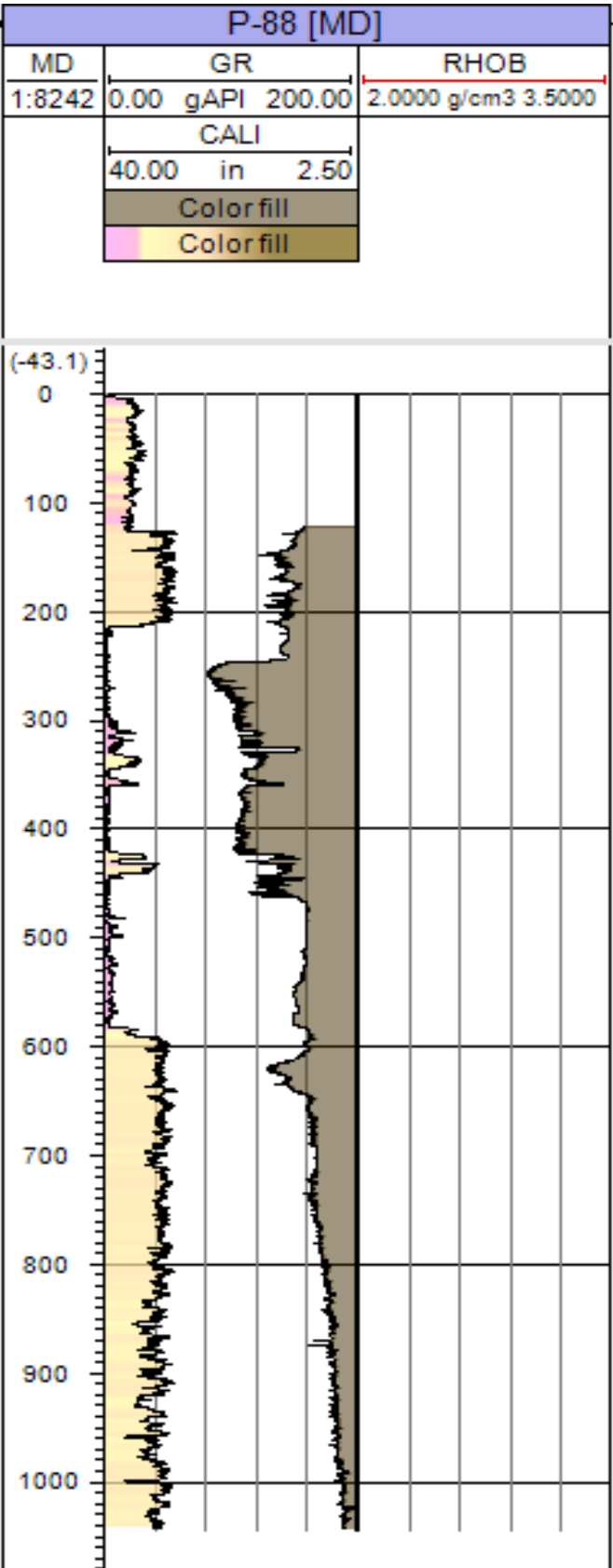
KB: 9.14m

TD: 1044.34m

Inventory of well logs



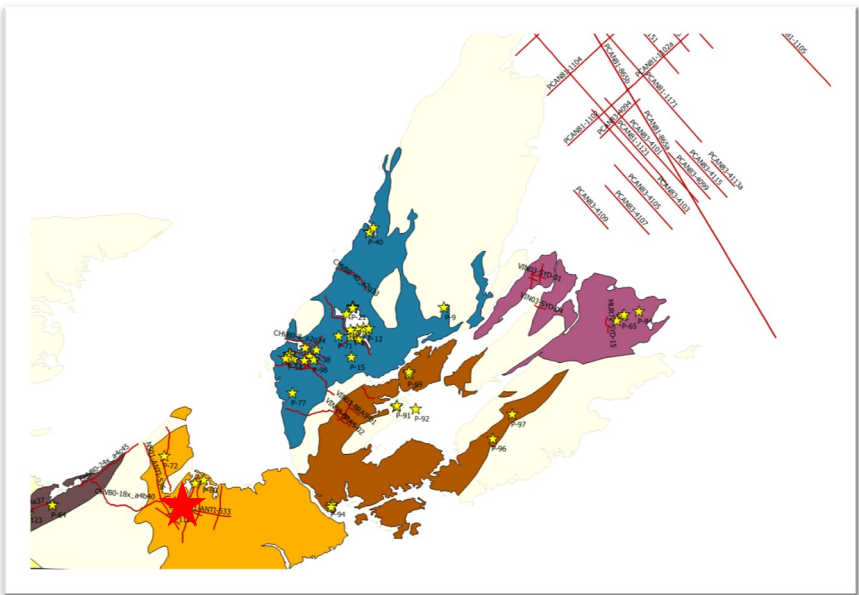
Composite logs



Nova Scotia Onshore Petroleum Atlas

Formation Top

Formation/Member	Top (m)
Base Surface Drift	21.3
Thin Gypsum	140.2
Massive Gypsum	149.4
First Massive Salt	246.3
Dolomite Marker	323.1
Salt Stringer	343.2
Second Massive Salt	360.3
Base Salt	423.1
Third Massive Salt	441.4
Massive Gypsum	461.2
Horton Sharp Angle Conglomerate	588.3
Conglomeratic Shale	594.4
Conglomeratic Sandstone	694.3
PreCambrian Granite	1023.2



Composite logs

Well ID: P-90

Well Name: Bras d’Or #1

Well Type: Vertical Well

Spud Date: Sep.1979

Status: Plugged and Abandoned

Operator: Chevron Standard Ltd/Irving Oil Ltd

Core: 15-215m(cutting)

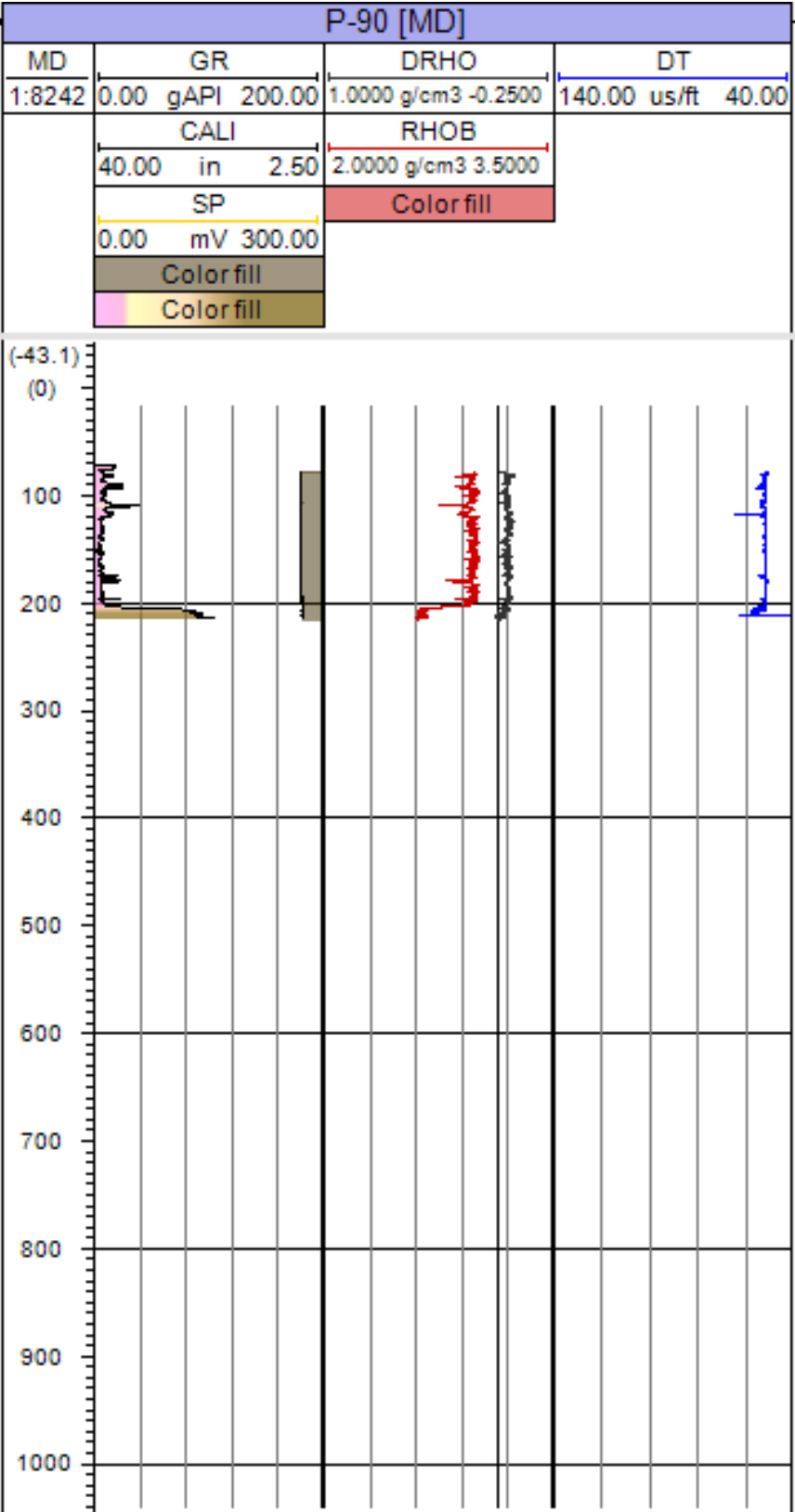
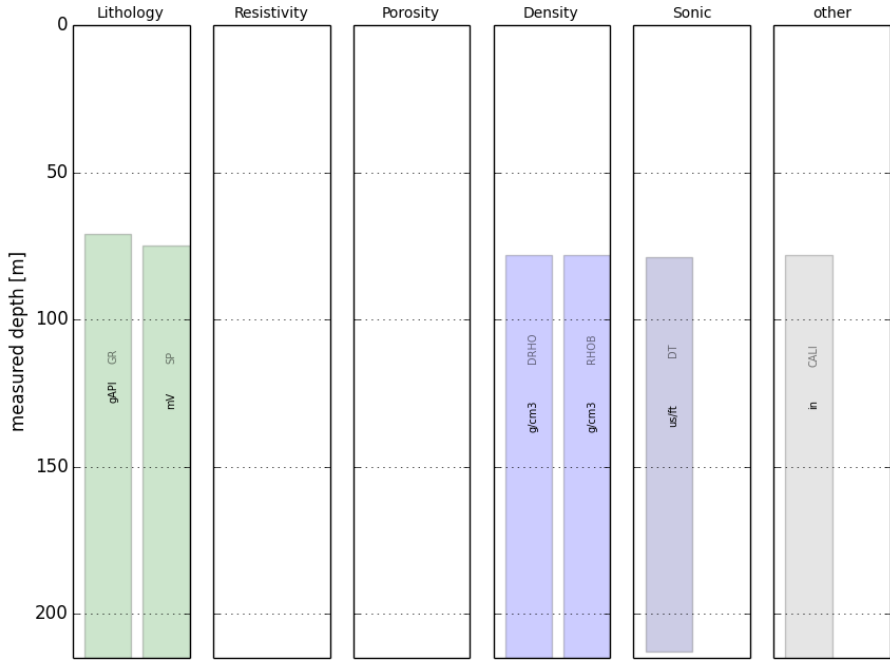
Surface Location: 654839(Easting); 5082103(Northing)

Coordinate Reference System: NAD 83/UTM Zone 20

KB: 13m

TD: 216m

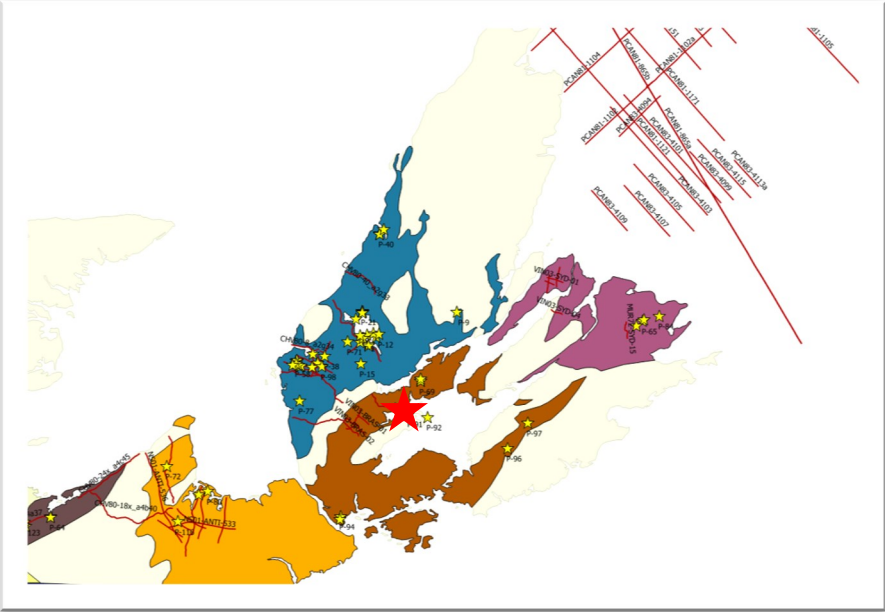
Inventory of well logs



Nova Scotia Onshore Petroleum Atlas

Formation Top

Formation/Member	Top (m)
Macumber Limestone	207.5
Devonian Granodiorite	209.5



Composite logs

Well ID: P-91

Well Name: Bras d’Or #2

Well Type: Vertical Well

Spud Date: Oct.1979

Status: Plugged and Abandoned

Operator: Chevron Standard Ltd/ Irving Oil Ltd

Core: 30-375m(cutting)

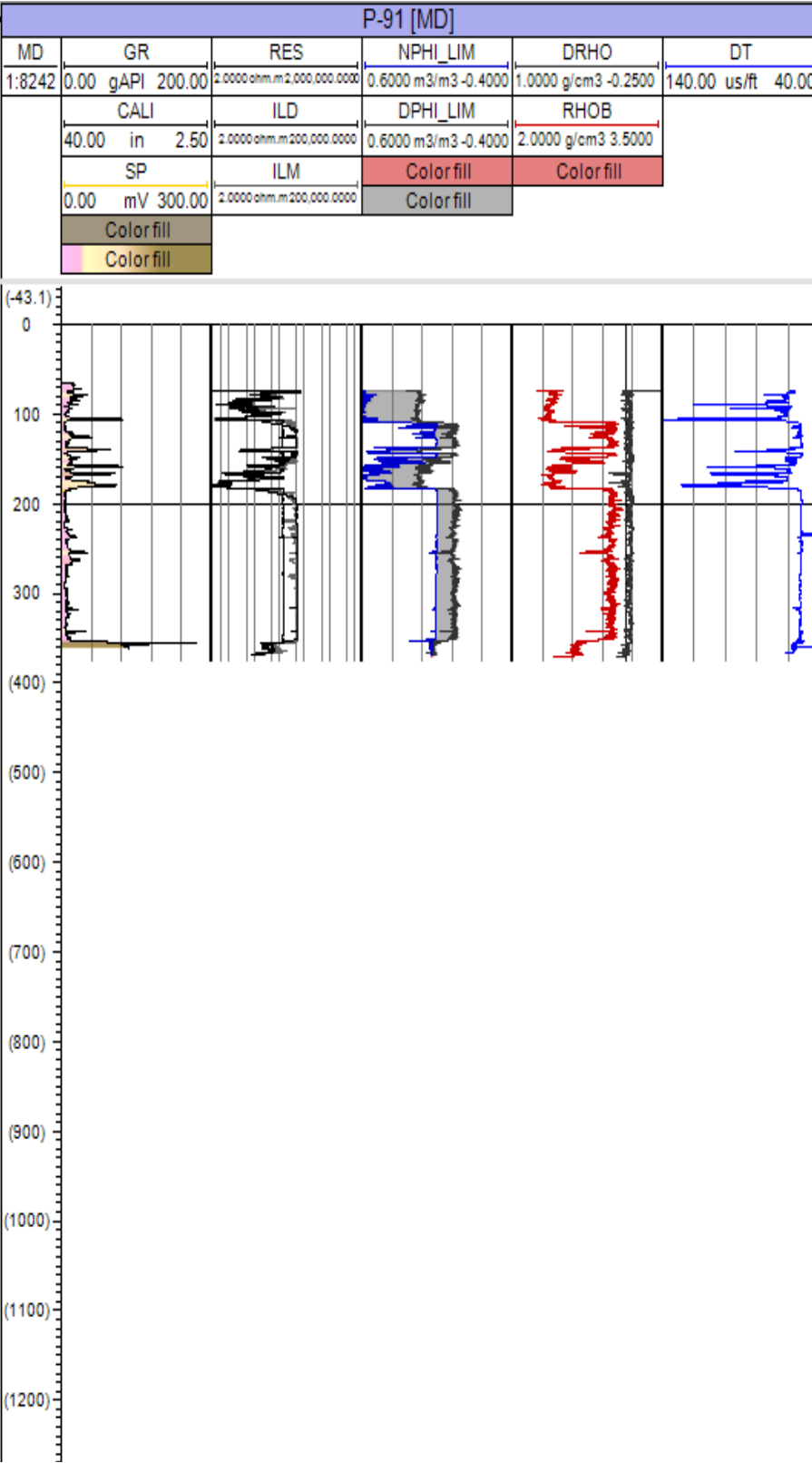
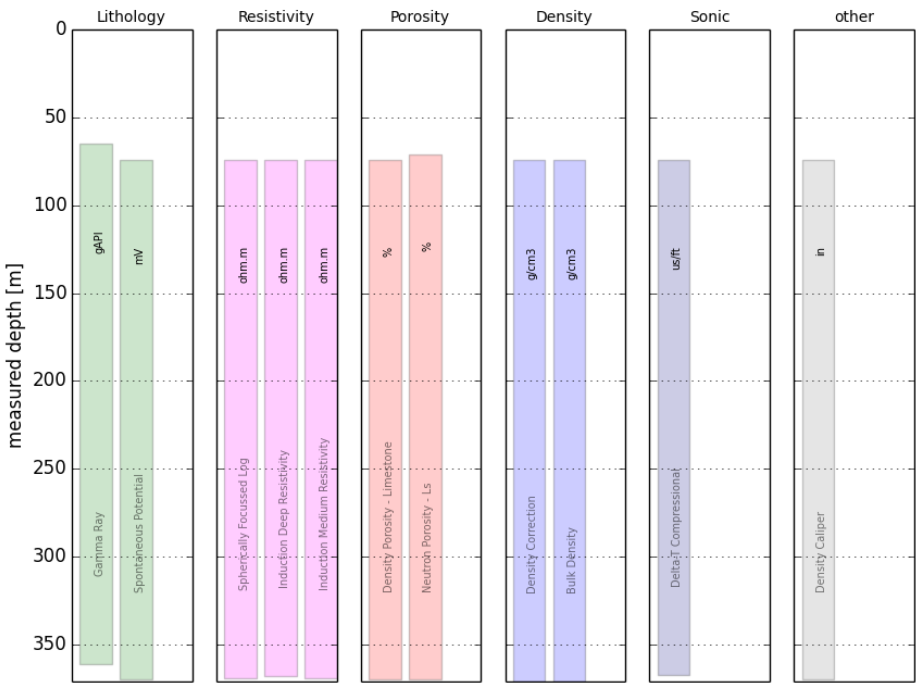
Surface Location: 655150(Easting); 5082574(Northing)

Coordinate Reference System: NAD 83/UTM Zone 20

KB: 15.1m

TD: 375m

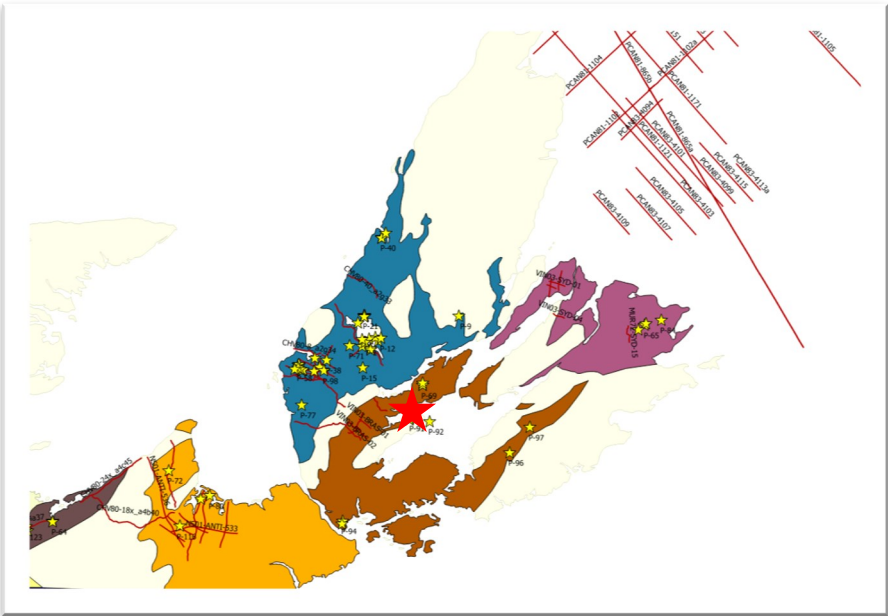
Inventory of well logs



Nova Scotia Onshore Petroleum Atlas

Formation Top

Formation/Member	Top (m)
Basal Anhydrite	184
Macumber Limestone	352.5
Devonian Granodiotire	355



Composite logs

Well ID: P-92

Well Name: Malagawatch #1

Well Type: Vertical Well

Spud Date: Oct.1979

Status: Plugged and Abandoned

Operator: Chevron Standard Ltd/Irving Oil Ltd

Core: 560-596m(core1-4), 885-948(core5-11)& 10-895m(cutting)

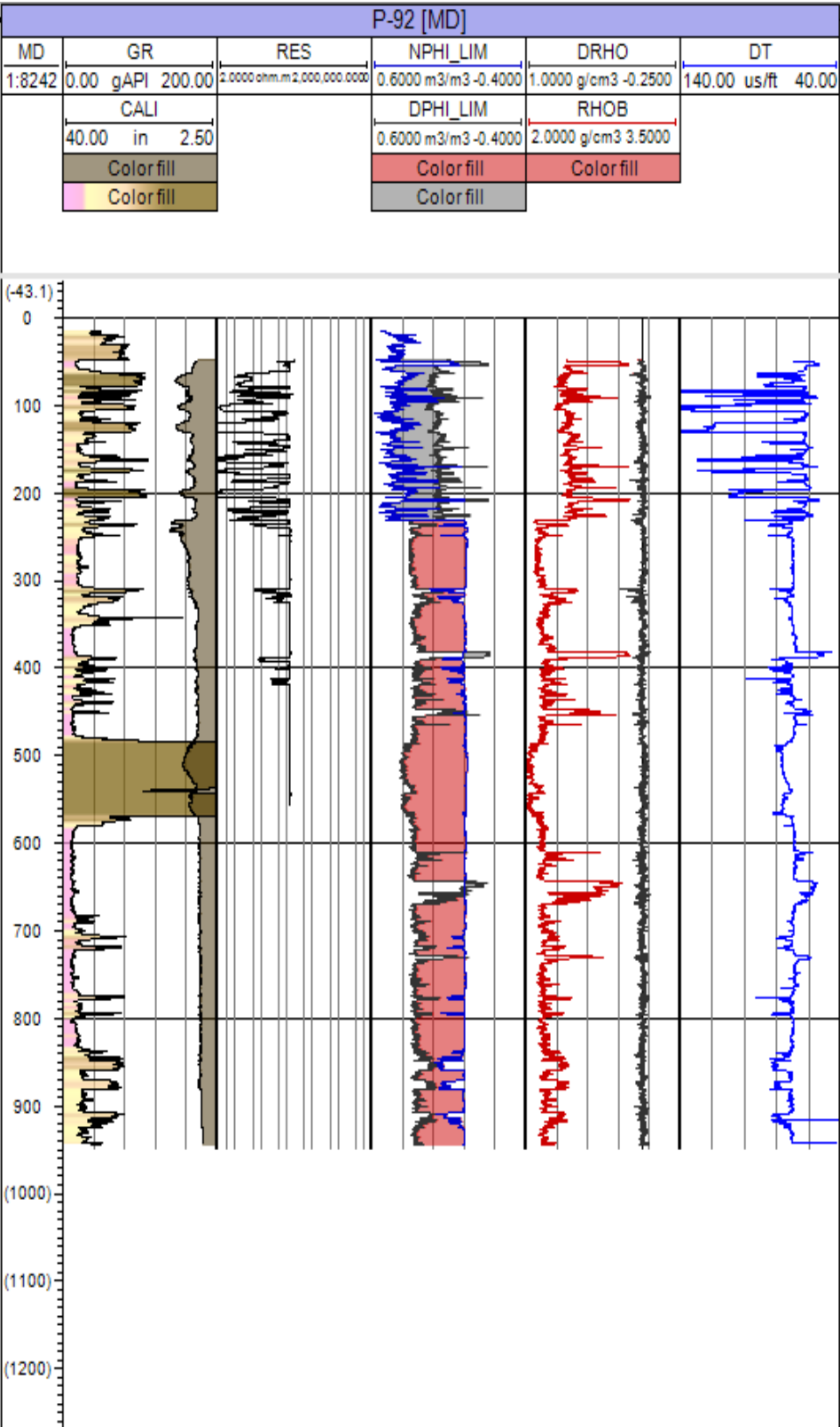
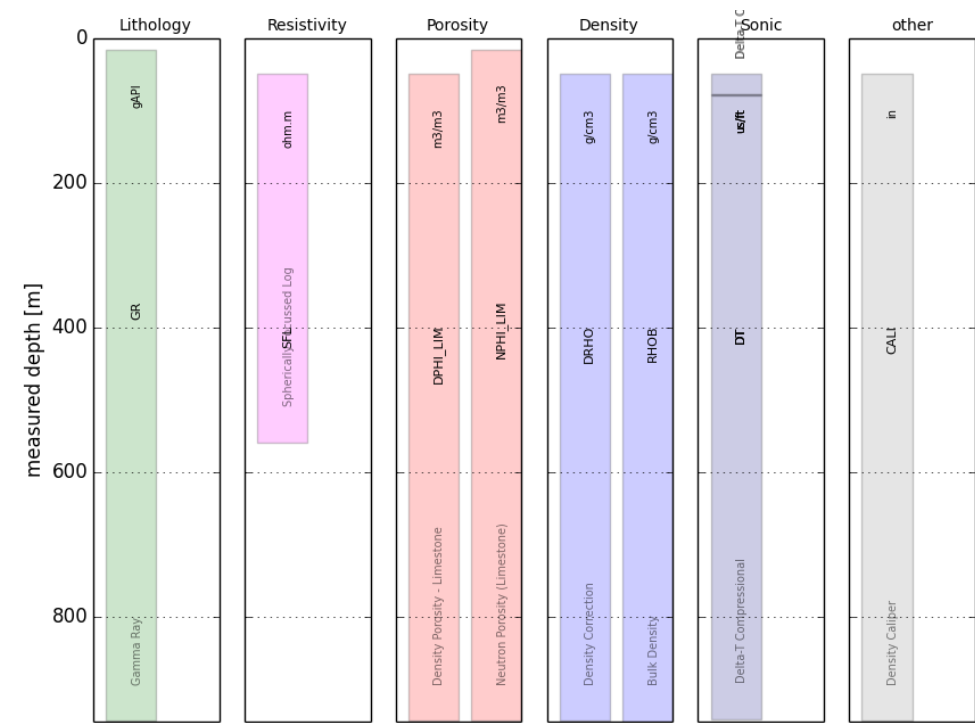
Surface Location: 551369(Easting); 5081497(Northing)

Coordinate Reference System: NAD 83/UTM Zone 20

KB: 8.03m

TD: 948m

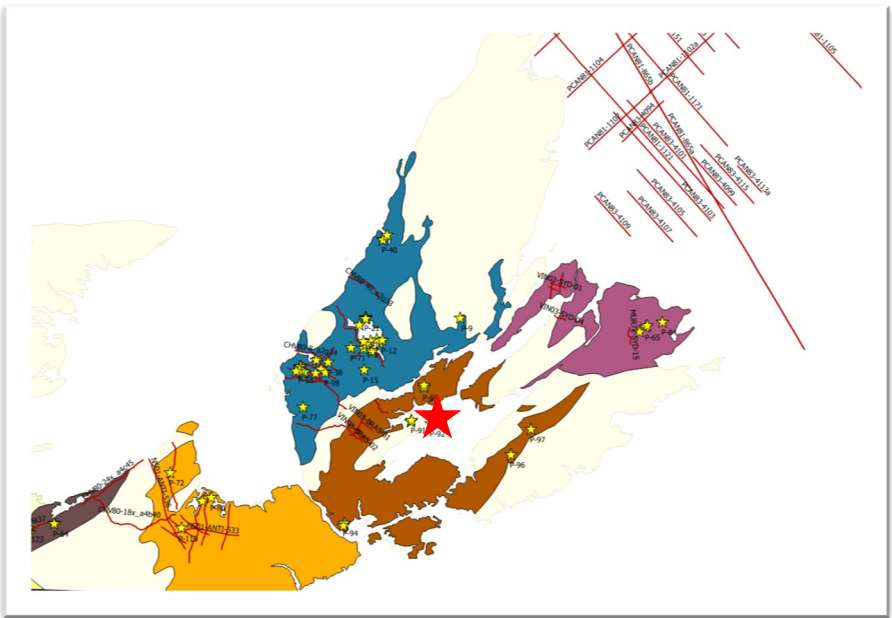
Inventory of well logs



Nova Scotia Onshore Petroleum Atlas

Formation Top

Formation/Member	Top (m)
Windsor Salt	223.5





Composite logs

Well ID: P-98

Well Name: Irving Chevron Mull River #1

Well Type: Vertical Well

Spud Date: May. 1998

Status: Plugged and Abandoned

Operator: Chevron Canada Resource Ltd

Core: 1172-1183.2m(core 1) & 0-1502m(cutting)

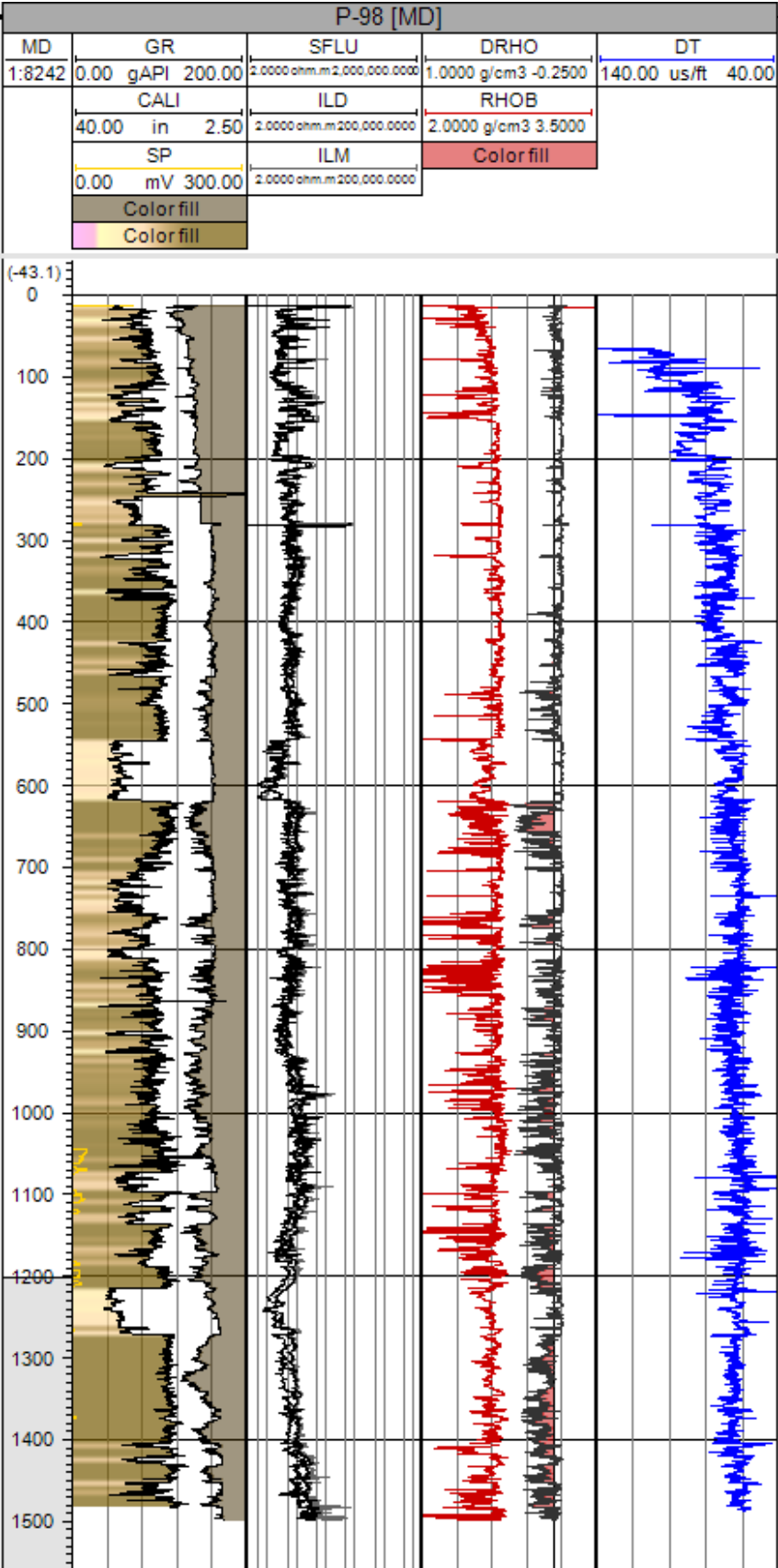
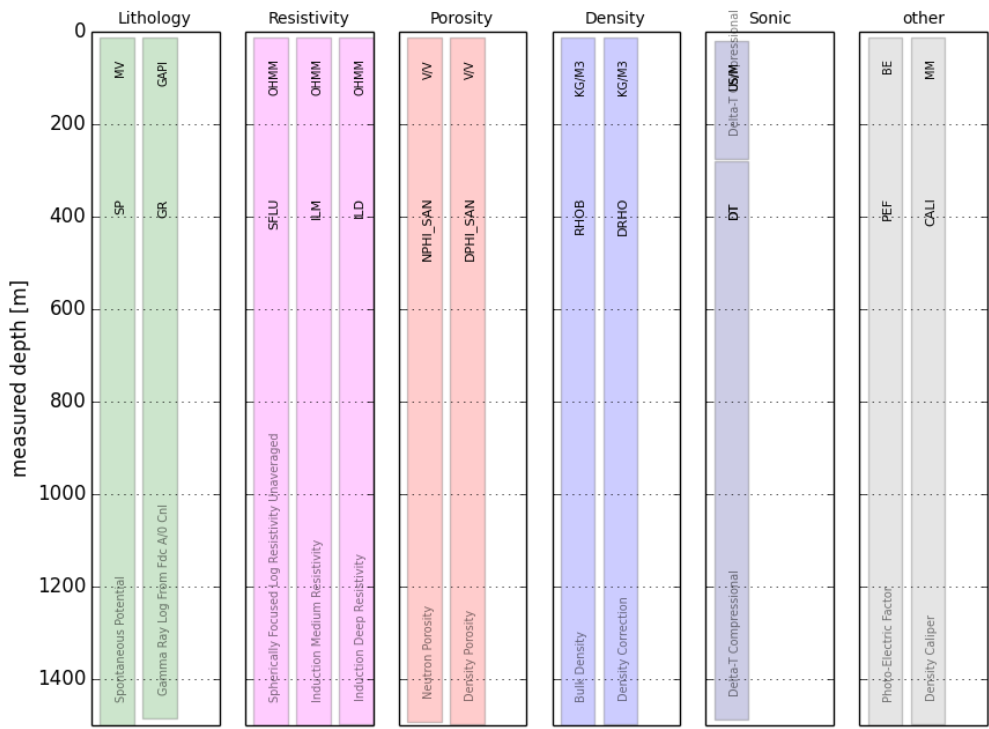
Surface Location: 626989(Easting); 5098111(Northing)

Coordinate Reference System: NAD 83/UTM Zone 20

KB: 195.3m

TD: 1502m

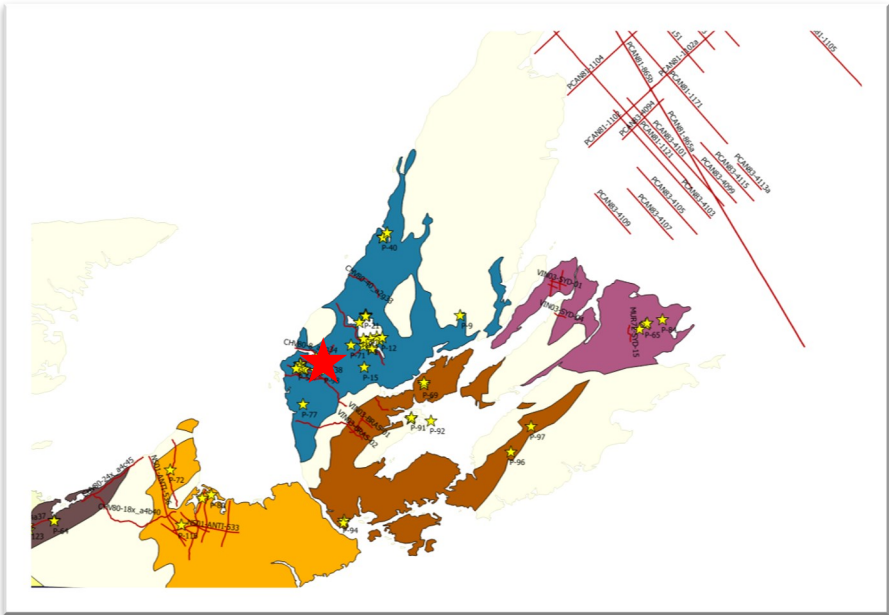
Inventory of well logs



Nova Scotia Onshore Petroleum Atlas

Formation Top

Formation/Member	Top (m)
Ainslie	0
Upper Fault	224
Strathlorne	225
Craignish	545
Lower Fault	1262
Ainslie 2	1263
Strathlorne 2	1271
TD	1502





## Composite logs

Well ID: P-116

Well Name: VPCI Beech #1

Well Type: Vertical Well

Spud Date: Jul. 2003

## Status: Plugged and Abandoned

Operator: Vintage Petroleum

Core: 0-1044.5m(cutting)

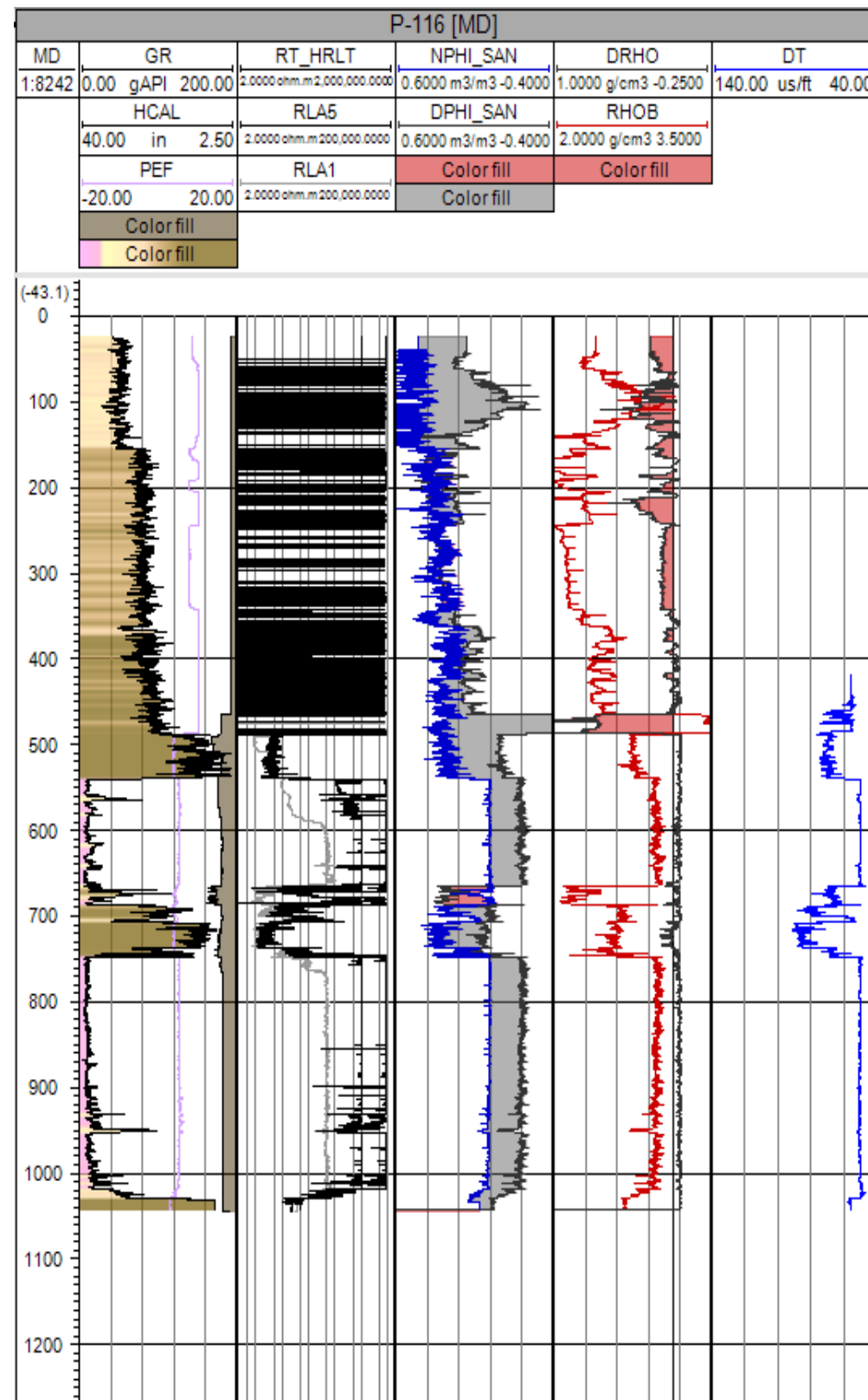
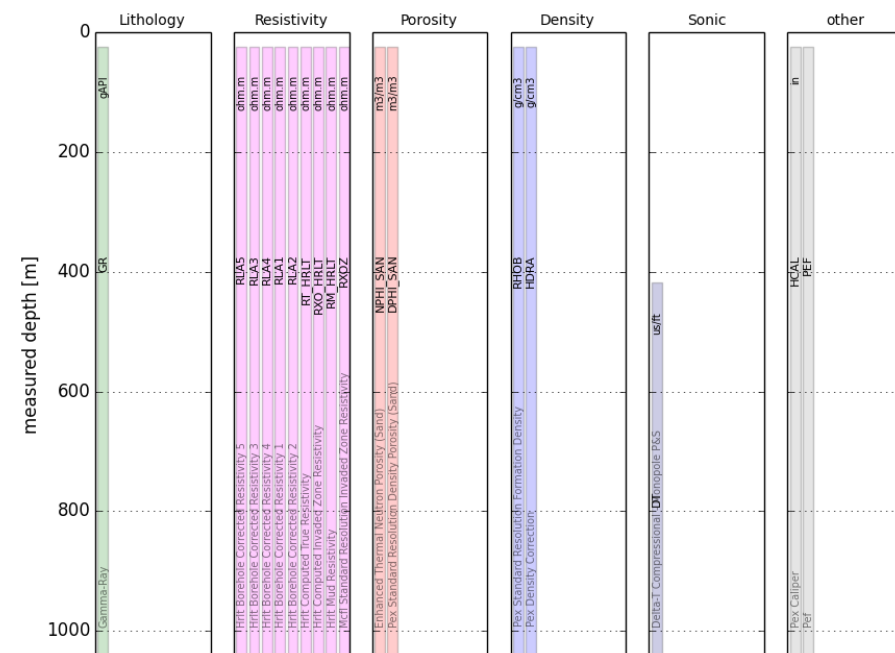
Surface Location: 580145(Easting); 5047154(Northing)

Coordinate Reference System: NAD 83/UTM Zone 20

KB: 71m

TD: 1044.5m

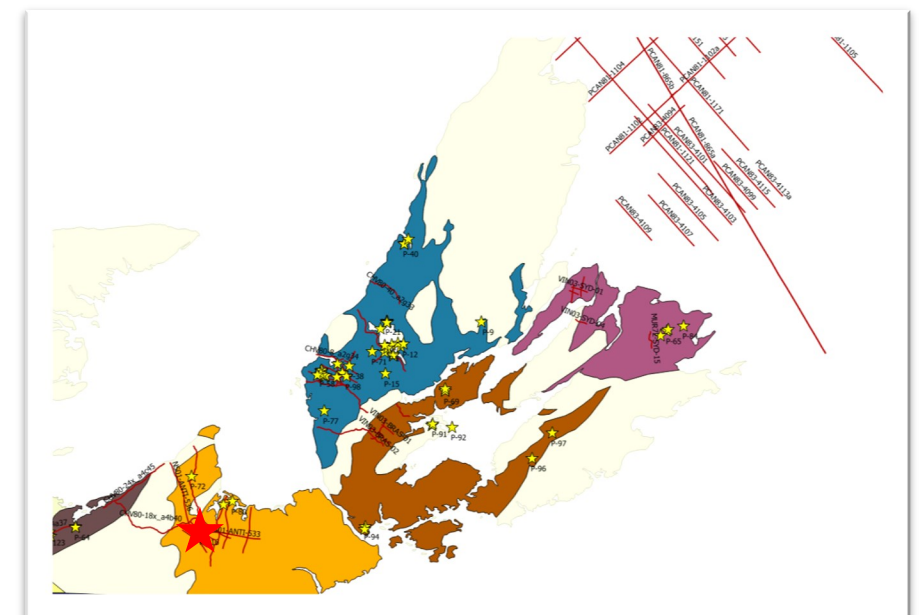
## Inventory of well logs



# Nova Scotia Onshore Petroleum Atlas

## Formation Top

Formation/Member	Top (m)
Hood Island	18
First Reflector	540
Second Reflector	703
Hartshorn/Bridgeville	748
Macumber	1019
Basement	1028.5
TD	1045



## Composite logs

Well ID: CCS

Well Name: CCSNS #1

Well Type: Vertical Well

Spud Date: Nov.2014

Status: Plugged and Abandoned

Operator: Carbon Capture &amp; Storage Research Consortium of NS

Core: 1129-1139.9m(core1), 1424-1424.3m(core2)

0-1527m(cutting)

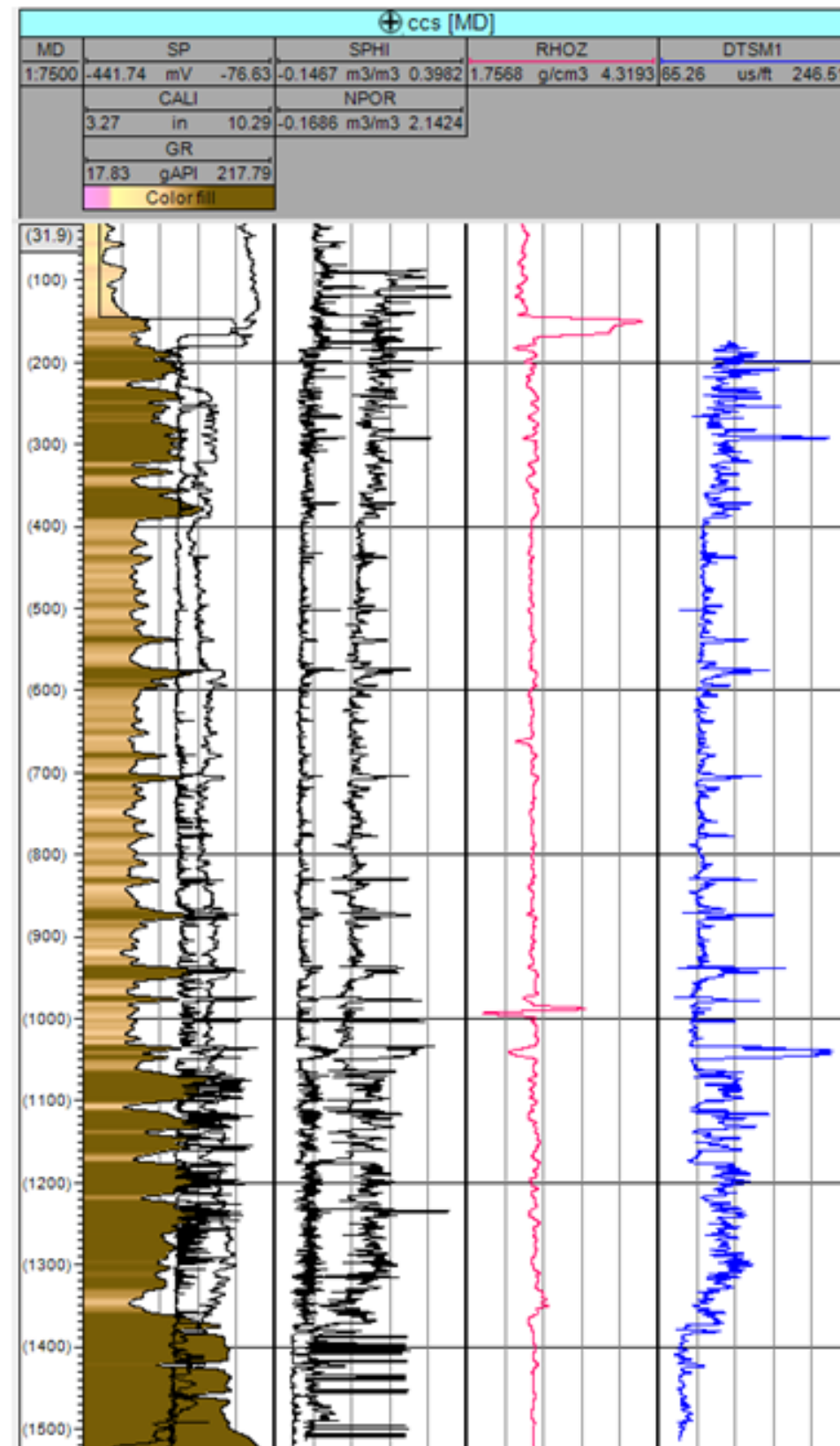
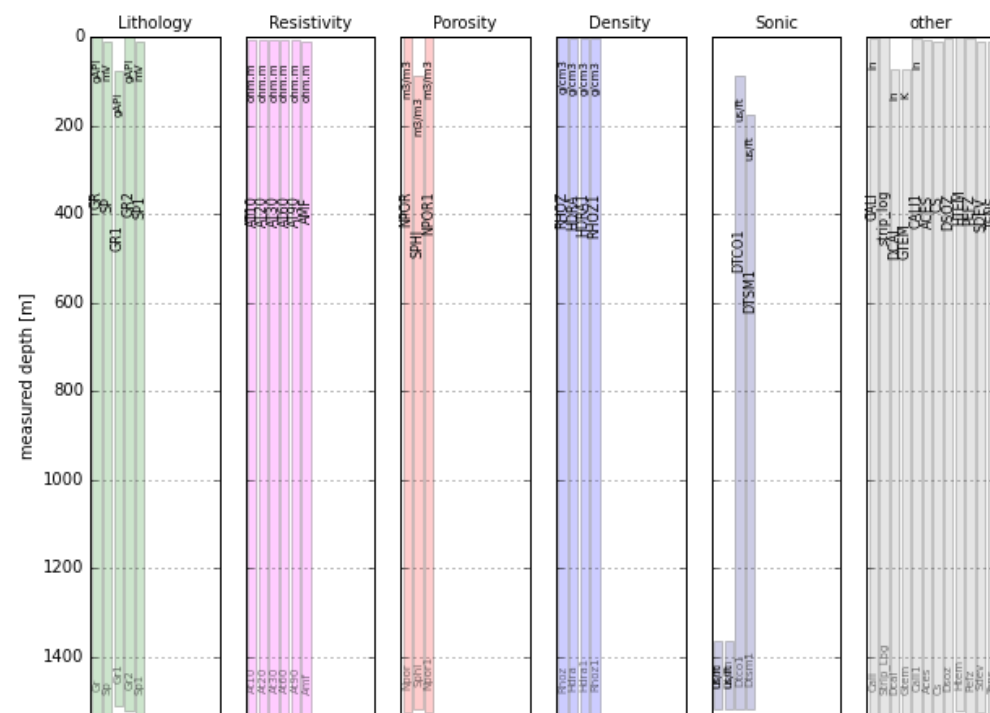
Surface Location: 268555(Easting); 5118050(Northing)

Coordinate Reference System: NAD 83/UTM Zone 20

KB: 37.64m

TD: 1527m

## Inventory of well logs



# Nova Scotia Onshore Petroleum Atlas

## Formation Top

Formation/Member	Top (m)
------------------	---------

