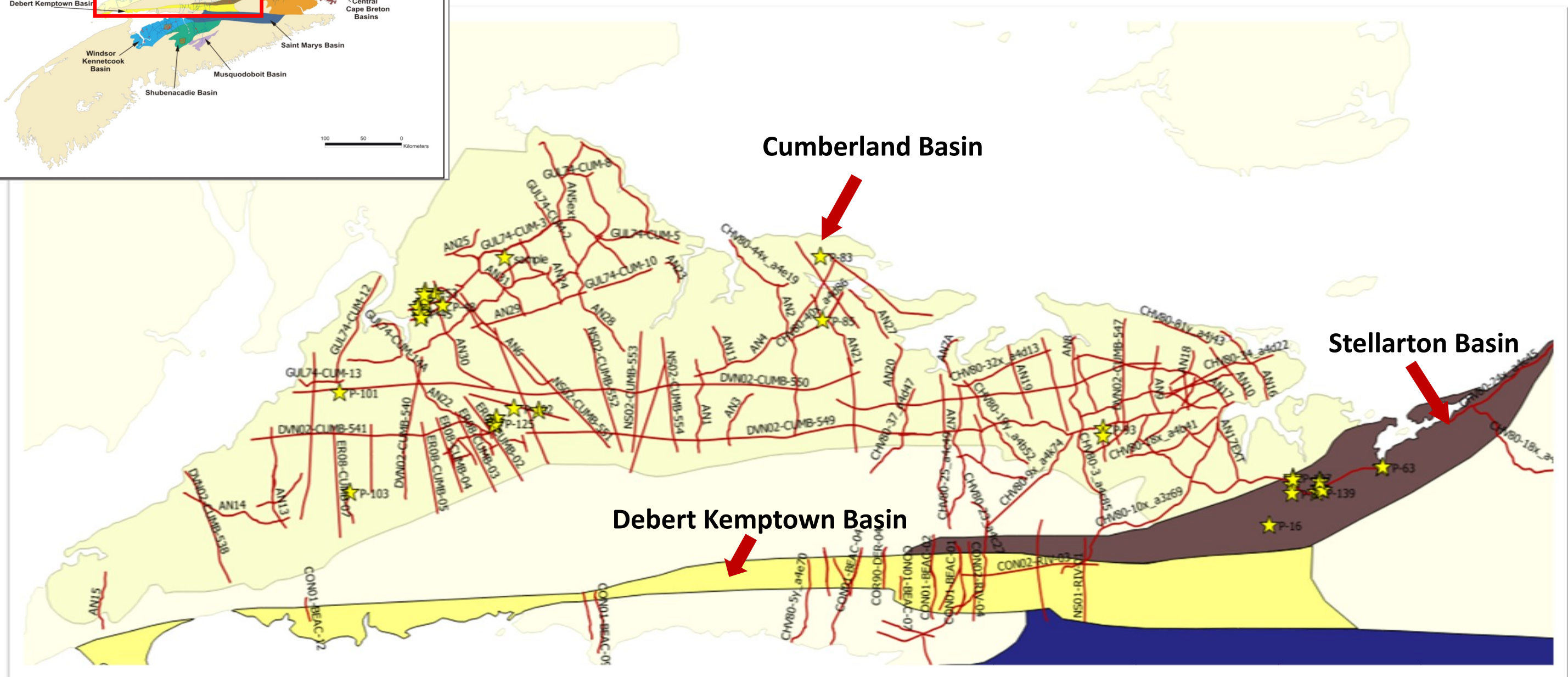
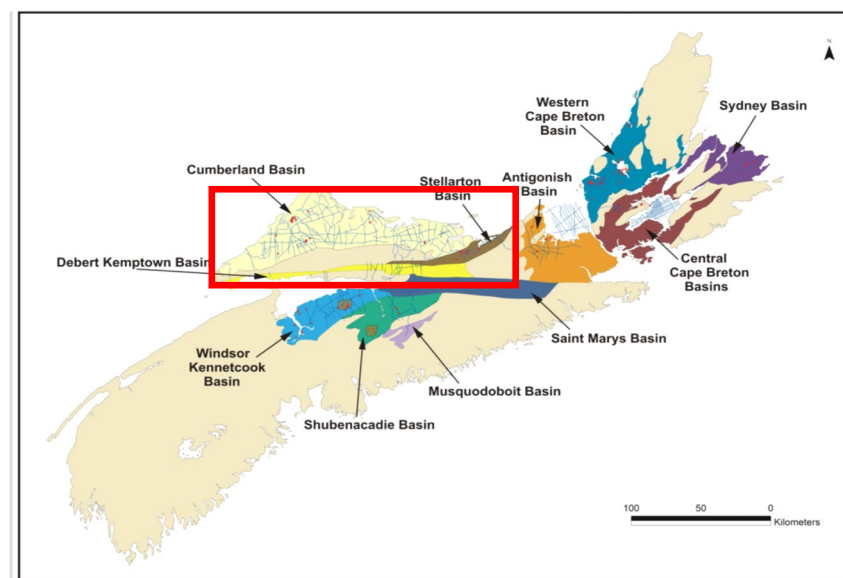


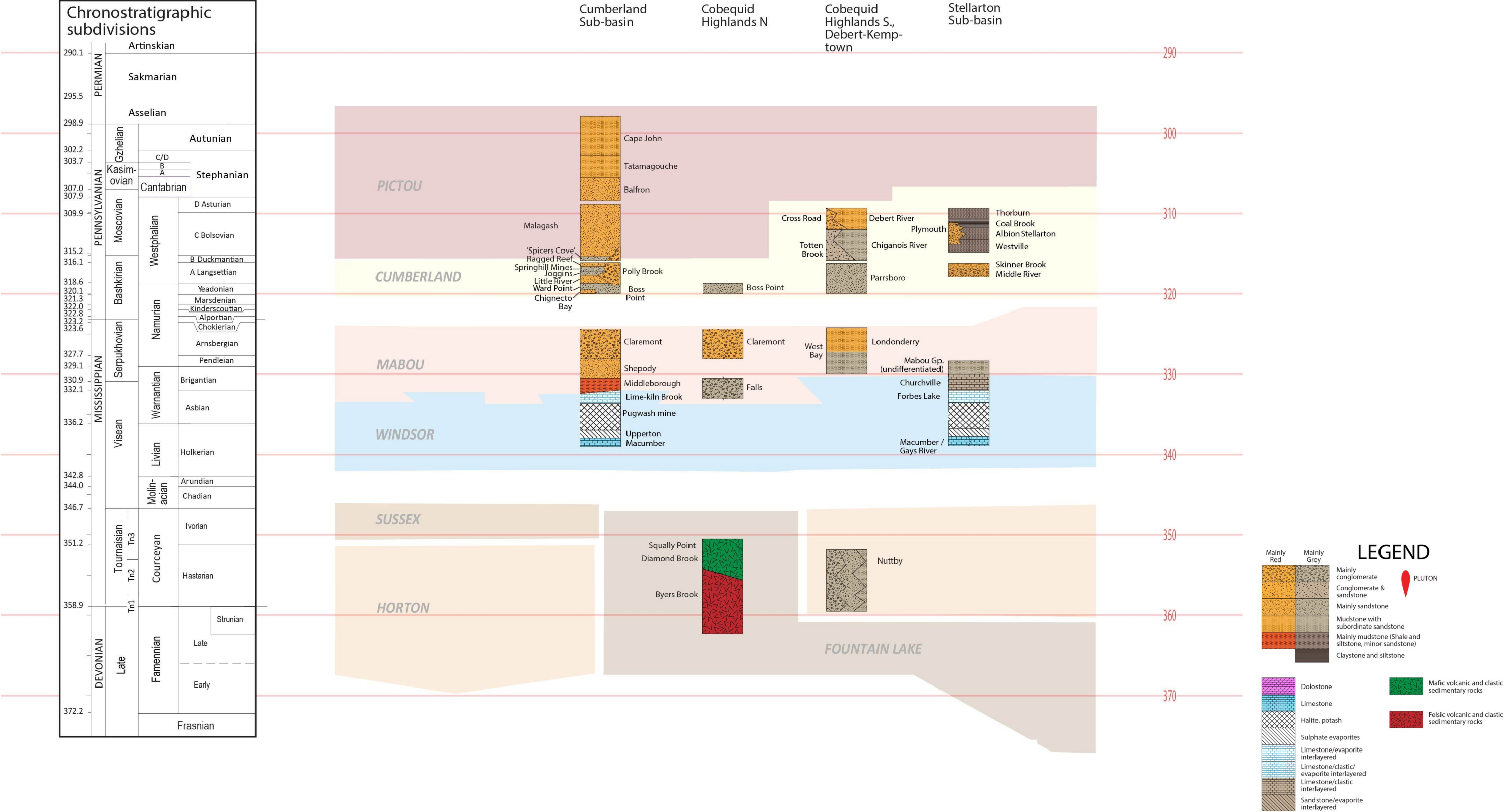
NSDOE Open File Report 2017-08

Schedule of Petroleum Wells, onshore Nova Scotia

Part 2: Cumberland Region



Location Map of Cumberland Region



Stratigraphic Column of Cumberland Region (Waldron, 2017)

Well ID	Well Name	Company	Spud Date	KB (m)	Total Depth (m)	Latitude Longitude	Basin	Status Description
P-83	Pacific Fox Harbour C-96-V	Pacific Petroleum Ltd.	December 10, 1963	29	3,003.2	45°50'56.25" N 63°30'46.87" W	Cumberland Basin	Plugged and Abandoned
P-85	Wallace Station #1	Anschutz (Canada) Exploration Ltd.	December 22, 1972	65	4,536.0	45°46'15" N 63°30'30" W	Cumberland Basin	Plugged and Abandoned
P-86	Hastings #1	Gulf Oil Canada Ltd.	June 11, 1975	60	2,939.5	45°50'35" N 64°04'52" W	Cumberland Basin	Plugged and Abandoned
P-93	Scotsburn #2	Chevron Standard Ltd./ Irving Oil Ltd.	August 11, 1981	95.4	2,638.0	45°38'21.59" N 63°00'10.78" W	Cumberland Basin	Plugged and Abandoned
P-101	River Hebert REI-B2-1	Resources Enterprises Inc. (REI)	September 12, 1994	21	1,305.5	45°40'32.505" N 64°22'22.166" W	Cumberland Basin	Plugged and Abandoned
P-103	Newville Lake REI-B3-3	Resources Enterprises Inc. (REI)	October 28, 1994	22.9	828.0	45°33'13.009" N 64°21'5.061" W	Cumberland Basin	Plugged and Abandoned
P-104	Springhill/Athol REI-B1-4	Resources Enterprises Inc. (REI)	October 5, 1994	119	1,220.0	45°38'18.4" N 64°05'39.407" W	Cumberland Basin	Plugged and Abandoned
P-122	Coal Mine Brook #3	Stealth Ventures Ltd.	January 22, 2006	105.8	1,687.60 (MD) 1,270.13 (TVD)	45°38'49" N 64°05'30" W	Cumberland Basin	Suspended
P-124	Coal Mine Brook #12	Stealth Ventures Ltd.	August 23, 2006	107.89	1,638.40 (MD) 1,040.17 (TVD)	45°38'30.5" N 64°5'31.7" W	Cumberland Basin	Suspended
P-135	Eastrock Lauren #1 F-25-D/11-E-2	Eastrock Resources Ltd.	Dec 2,2011	123	947	45°39'26.52" N 63°0'51.35" W	Cumberland Basin	Plugged and Abandoned
P-106	Heather REI-SB-P2	Resources Enterprises Inc. (REI)	August 14, 1996	29.9	1,200.0	45°35'7.9" N 64°9'53.4" W	Stellarton Basin	Suspended
P-107	Highland Mall REI-SB-P3	Resources Enterprises Inc. (REI)	September 11, 1996	37.65	1,400.0	45°35'42.6" N 64°9'51.1" W	Stellarton Basin	Suspended
P-115	ECA 400-2	EnCana Corporation	November 5, 2002	65	912.0	45°34'27.3" N 62°36'59.8" W	Stellarton Basin	Suspended
P-123	Priestville #4	Stealth Ventures Ltd.	May 15, 2006	79.1	815.0 (MD) 776.90 (TVD)	45°34'31.399" N 62°36'54.953" W	Stellarton Basin	Plugged and Abandoned
P-134	ECE-11-01	East Coast Energy Inc	Jan 21,2011	43	678	45°33'56.44" N 63°36'57.13" W	Stellarton Basin	Plugged and Abandoned
P-138	ECE-13-P1	East Coast Energy Inc	Nov 6,2013	39.89	700	45°34'0.145" N 62°36'52.320" W	Stellarton Basin	Suspended
P-139	ECE-13-P2 Hz	East Coast Energy Inc	Nov 21,2013	44.68	622 TVD/854 MD	45°33'41.110" N 62°37'16.565" W	Stellarton Basin	Suspended

Petroleum Wells with LAS in Cumberland & Stellarton basins

Well ID	Well Name	Company	Spud Date	KB (m)	Total Depth (m)	Latitude Longitude	Basin	Status Description
P-44	Nappan #1	Imperial Oil Limited	November 1927	21	205.1	45°46'05" N±10" 64°13'42" W±21"	Cumberland Basin	Plugged and Abandoned
P-45	Nappan #2	Imperial Oil Limited	November 1927	9	48.5	45°46'27" N±10" 64°13'52" W±15"	Cumberland Basin	Plugged and Abandoned
P-46	Nappan #3	Imperial Oil Limited	December 1927	15	54.0	45°46'18" N±8" 64°13'41" W±20"	Cumberland Basin	Plugged and Abandoned
P-47	Nappan #4	Imperial Oil Limited	1928-1929	6	242.3	45°46'51" N±11" 64°14'08" W±20"	Cumberland Basin	Plugged and Abandoned
P-48	Nappan #5	Imperial Oil Limited	1928-1929	17	242.3	45°47'00" N±18" 64°11'24" W±10"	Cumberland Basin	Plugged and Abandoned
P-49	Nappan #6	Imperial Oil Limited	1928-1929	17	90.8	45°47'00" N±12" 64°11'24" W±20"	Cumberland Basin	Plugged and Abandoned
P-50	Nappan #7; NSDM Record No. 710, Borehole #1	Imperial Oil Limited	September 9, 1929	23	131.7	45°47'48" N±13" 64°13'24" W±20"	Cumberland Basin	Plugged and Abandoned
P-51	Nappan #8	Imperial Oil Limited	1929	13	103.6	45°47'20" N±17" 64°13'21" W±12"	Cumberland Basin	Plugged and Abandoned
P-52	Nappan #9; NSDM Record No. 720, Borehole #2	Imperial Oil Limited	October 31, 1929	17	225.6	45°47'55" N±10" 64°12'14" W±10"	Cumberland Basin	Plugged and Abandoned
P-53	Nappan #10	Imperial Oil Limited	1929 -1930	26	96.3	45°48'00" N±12" 64°13'21" W±10"	Cumberland Basin	Plugged and Abandoned
P-54	Scotsburn #1	Imperial Oil Limited	September 9, 1930	98	603.5	45°37'52" N±35" 64°00'13" W±40"	Cumberland Basin	Plugged and Abandoned
P-55	Amherst #1	Imperial Oil Limited	March 9, 1931	10	1260.0	45°47'12" N±8" 64°13'23" W±6"	Cumberland Basin	Plugged and Abandoned
P-102	Shallow Springhill REI-B1-2	Resources Enterprises Inc. (REI)	September 21, 1994	135	183.0	45°39'33.483" N 64°03'33.544" W	Cumberland Basin	Plugged and Abandoned
P-125	Coal Mine Brook #13	Stealth Ventures Ltd.	September 17, 2006	108	2,053.08 (MD) 1,156.55 (TVD)	45°38'29.5" N 64°5'31.2" W	Cumberland Basin	Suspended
P-8	Unknown	Unknown	1878	32	85.3	45°33'36" N±10" 62°40'00" W±15"	Stellarton Basin	Plugged and Abandoned
P-16	NSDM Record No. 91	Unknown	November 18, 1902	91	189	45°31'18" N±12" 62°42'25" W±10"	Stellarton Basin	Plugged and Abandoned
P-63	NSDM Record # 1171; Borehole #1	Pictou Petroleum Company	May 16, 1946	4	197.0	45°35'30" N±25" 62°30'12" W±35"	Stellarton Basin	Plugged and Abandoned
P-64	NSDM Record # 1172; Borehole #2	Pictou Petroleum Company	May 16, 1946	14	11.1	45°35'25" N±25" 62°30'15" W±35"	Stellarton Basin	Plugged and Abandoned
P-105	Lourdes REI-SB-P1	Resources Enterprises Inc. (REI)	September 1, 1995	33	1,050.0	45°35'33.6" N 64°9'49.2" W	Stellarton Basin	Plugged and Abandoned
P-118	Priestville #3	Amvest Oil & Gas	November 2, 2004	52.05	999.97 (MD) 619.7 m (TVD)	45°33'48.448" N 62°36'35.916" W	Stellarton Basin	Suspended

Petroleum Wells without LAS in Cumberland +Stellarton basins

Well ID: P-83

Well Name: Pacific Fox Harbour C-96-V

Well Type: Vertical well

Spud Date: Dec. 1963

Status: Plugged and Abandoned

Operator: Pacific Petroleum Ltd

Core/Cutting: 948.5-951.6m (core 1), 2267.7-2275.3m (core 2),
2472.2-2487.5m (core 3) & 0– 3003.2m (cutting)

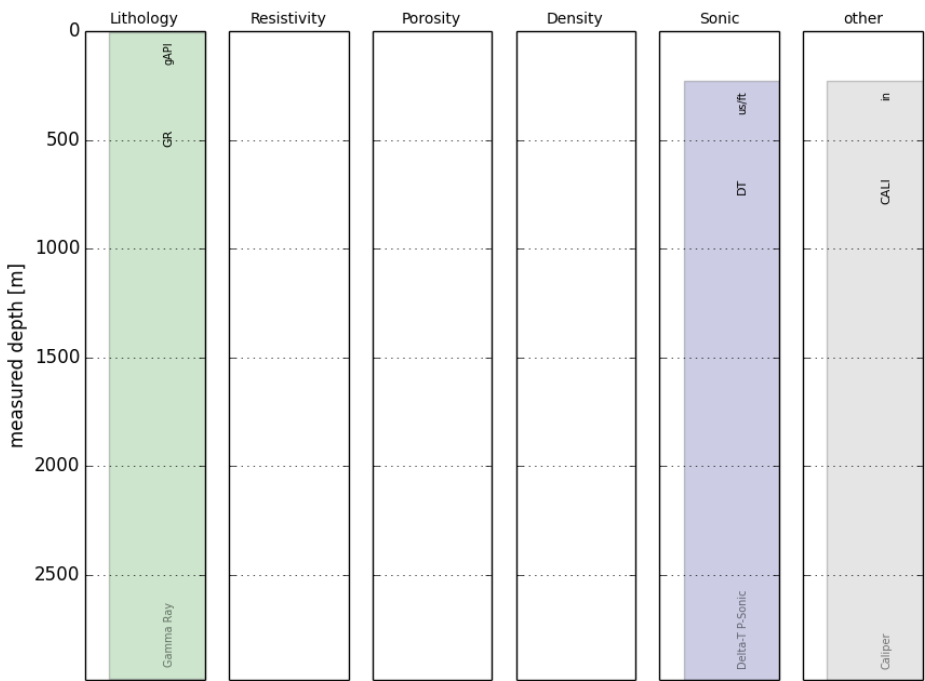
Surface Location: 460216(Easting); 5077394 (Northing)

Coordinate Reference System: NAD 83/UTM Zone 20

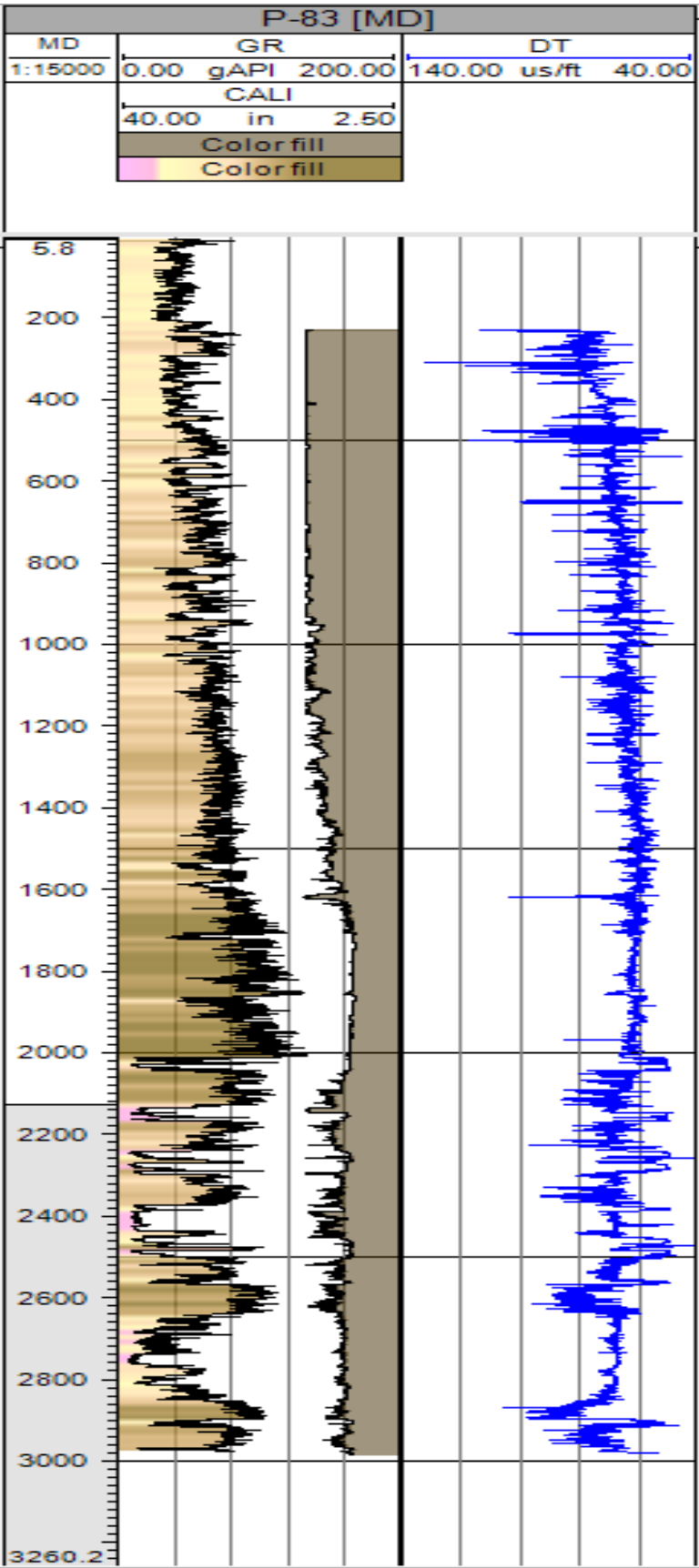
KB: 29m

TD: 3003.2m

Inventory of well logs



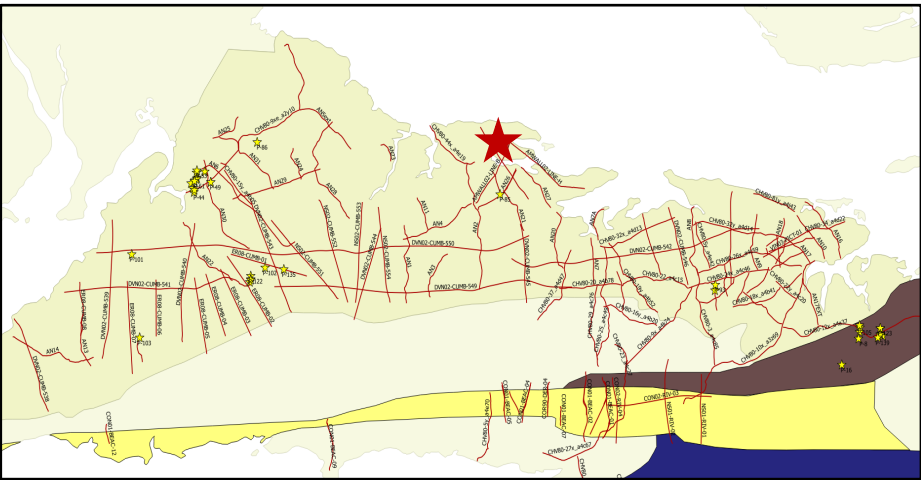
Composite logs



Nova Scotia Onshore Petroleum Atlas

Formation Top

Formation/Group	Top (m)
Pictou Group	12.2
Clarmont Formation	1566.7
Windsor Formation	1669.1
Subzone "C"	1708.4
Subzone "E"	2985.5



Well ID: P-85

Well Name: Wallace Station #1

Well Type: Vertical well

Spud Date: Dec. 1972

Status: Plugged and Abandoned

Operator: Anschutz (Canada) Exploration Ltd

Core: 2481.1-2487.2m (core 1), 4353.5-4371.7m (core 2),
4371.7-4390m (core 3) & 3-4536m (cutting)

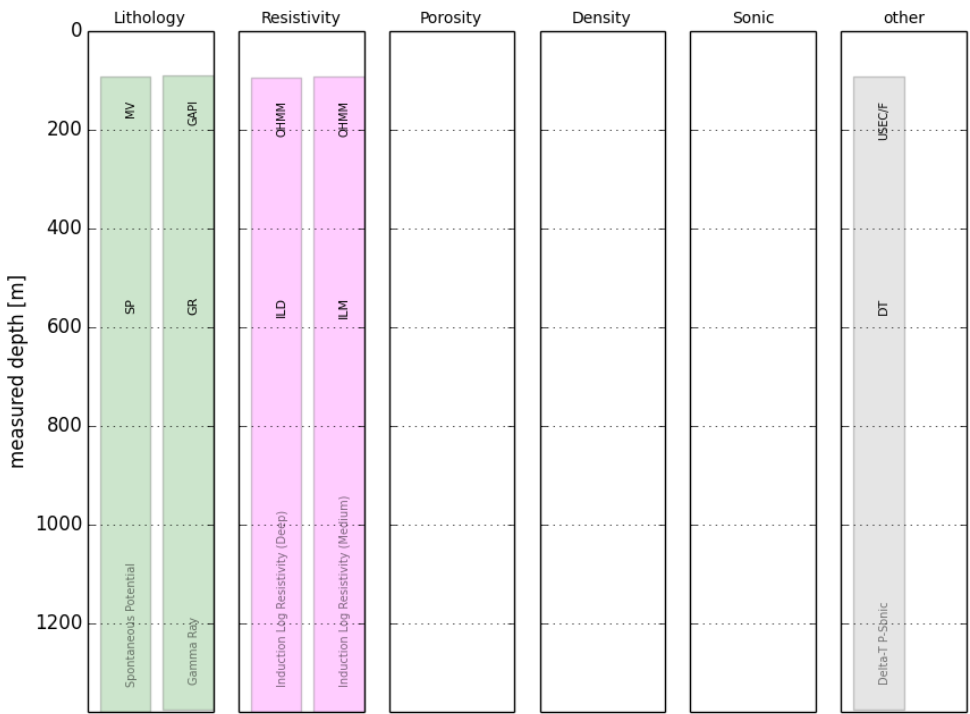
Surface Location: 460527(Easting); 5068720(Northing)

Coordinate Reference System: NAD 83/UTM Zone 20

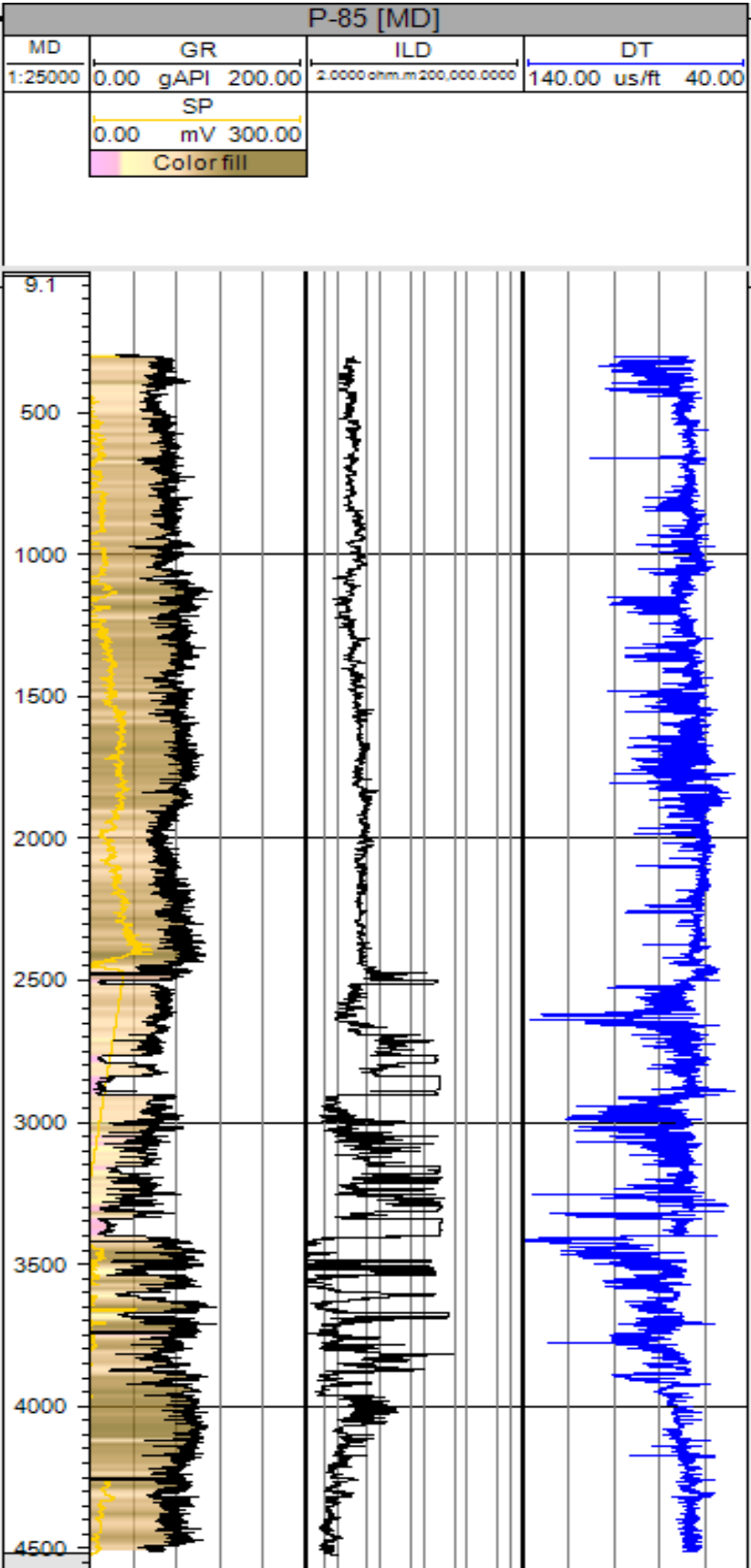
KB: 71.6m

TD: 4536m

Inventory of well logs



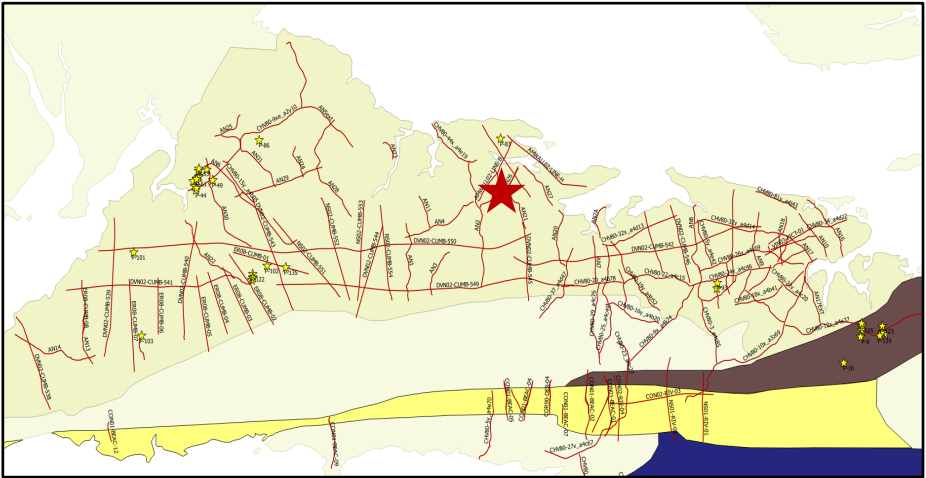
Composite logs



Nova Scotia Onshore Petroleum Atlas

Formation Top

Formation	Top (m)
Claremont Formation	490.7
Middleborough Formation	612.7
Windsor Group	2455.5
Pugwash Formation	3291.8



Well ID: P-86

Well Name: Hasting #1

Well Type: Vertical well

Spud Date: Jun. 1975

Status: Plugged and Abandoned

Operator: Gulf Oil Canada Ltd

Core: 2887.7-2891.9m (core 1), 24 side wall cores &
33.5-2938.3m (cutting)

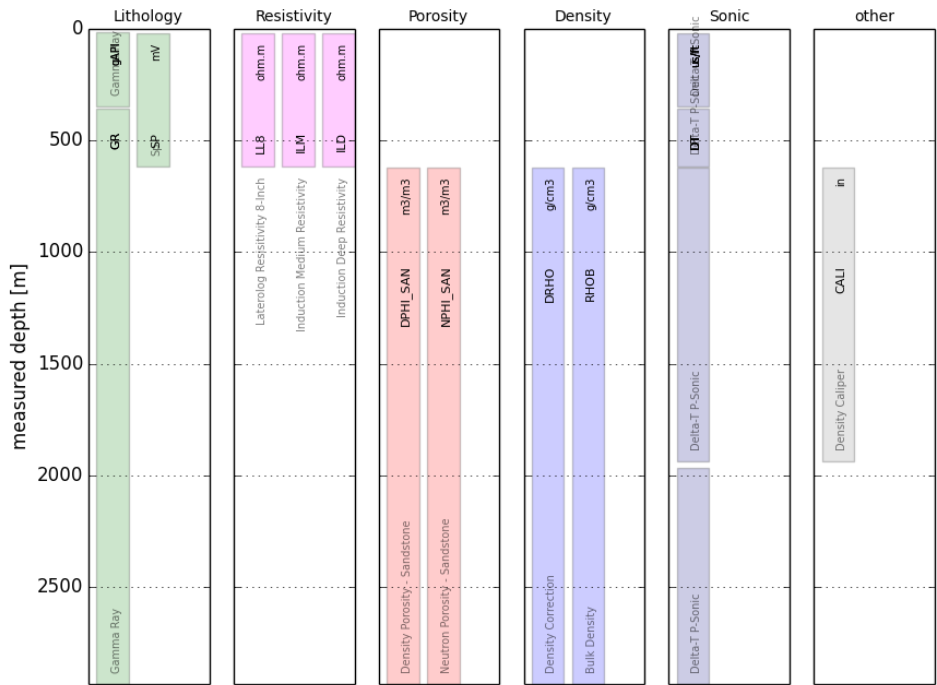
Surface Location: 416100(Easting); 5077186(Northing)

Coordinate Reference System: NAD 83/UTM Zone 20

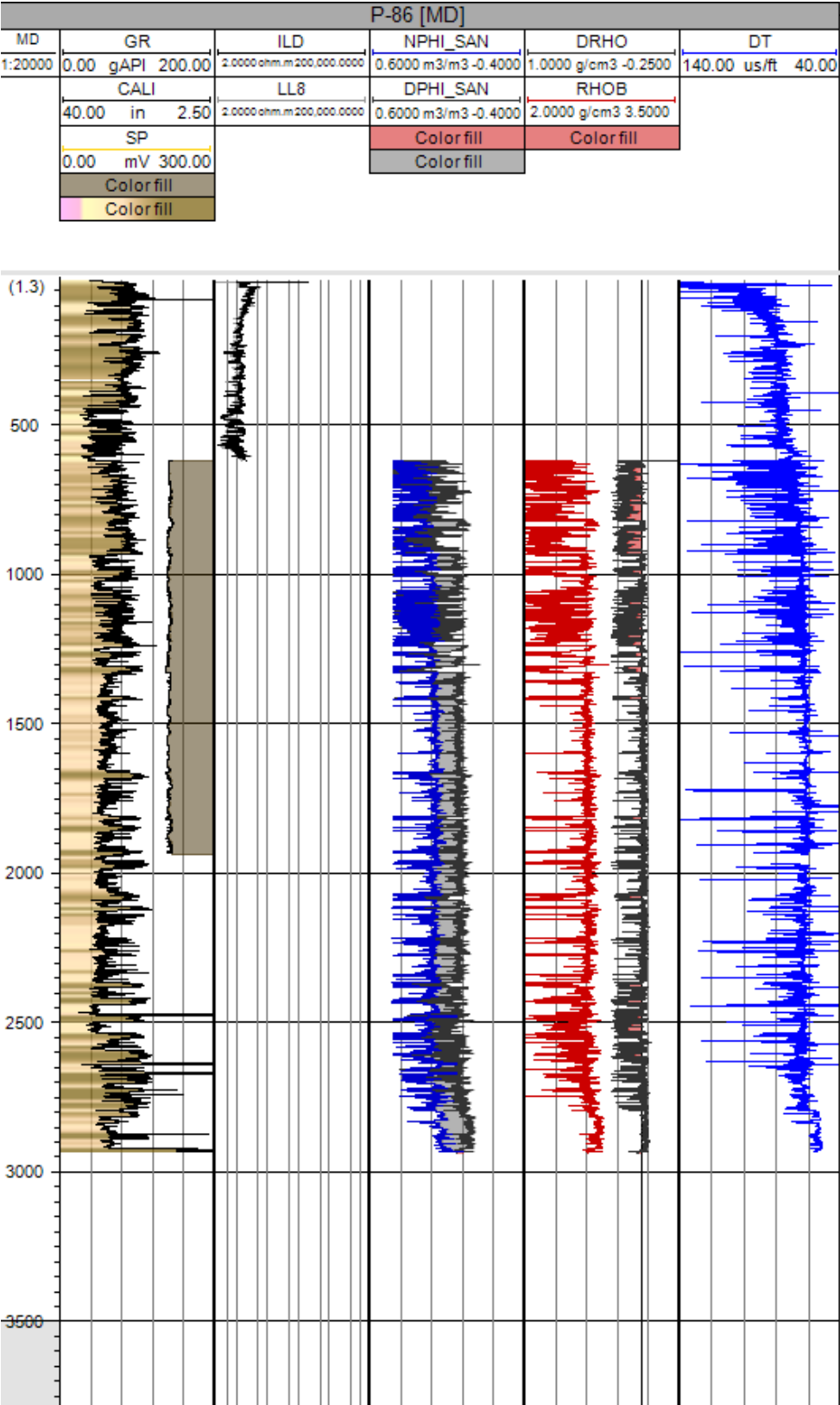
KB: 79.8m

TD: 2939.5m

Inventory of well logs



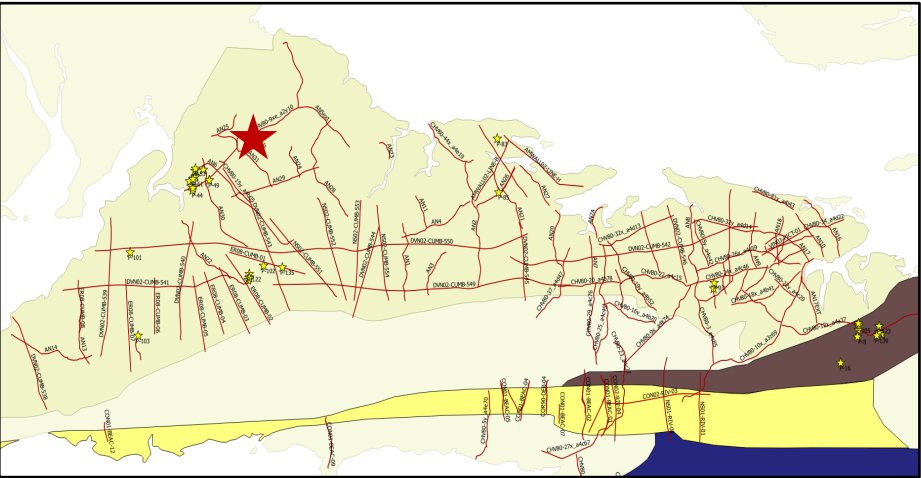
Composite logs

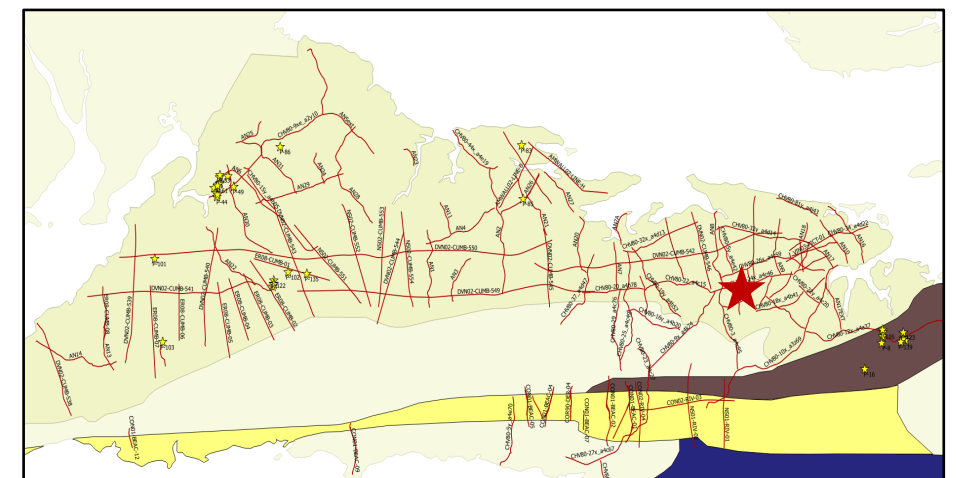


Nova Scotia Onshore Petroleum Atlas

Formation Top

Formation	Top (m)
Boss Point Formation	2222
Claremont Formation	2651.8
Basement	2796.5





Well ID: P-101

Well Name: River Hebert REI-B2-01

Well Type: CBM

Spud Date: Sep. 1994

Status: Plugged and Abandoned

Operator: Resource Enterprises Inc (REI)

Core: 57-1248.5m (core 1)

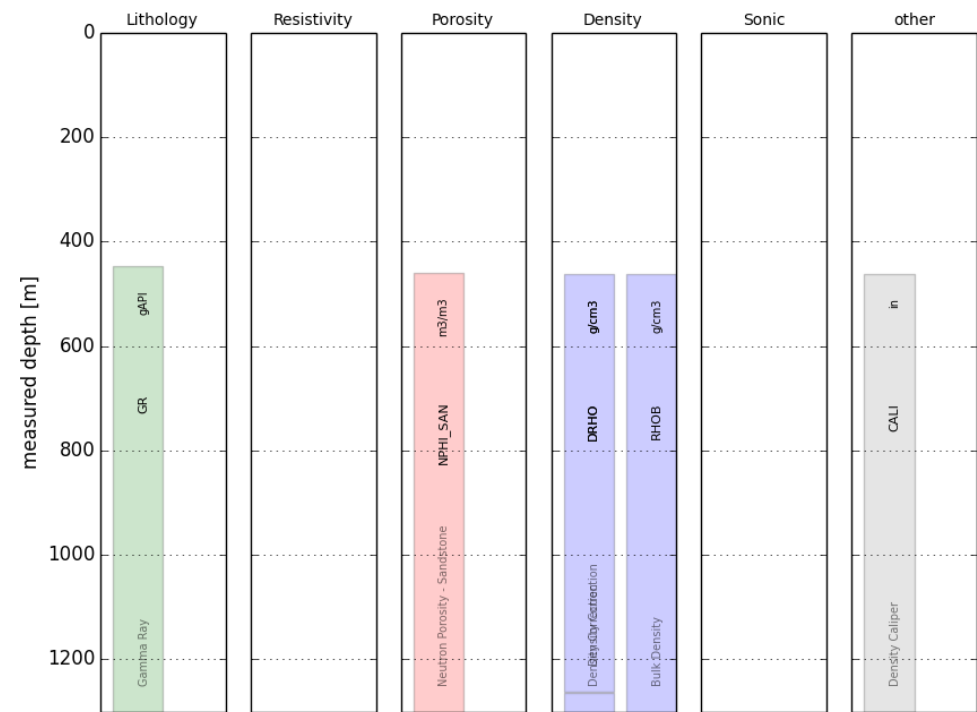
Surface Location: 393129 (Easting); 5058940 (Northing)

Coordinate Reference System: NAD 83/UTM Zone 20

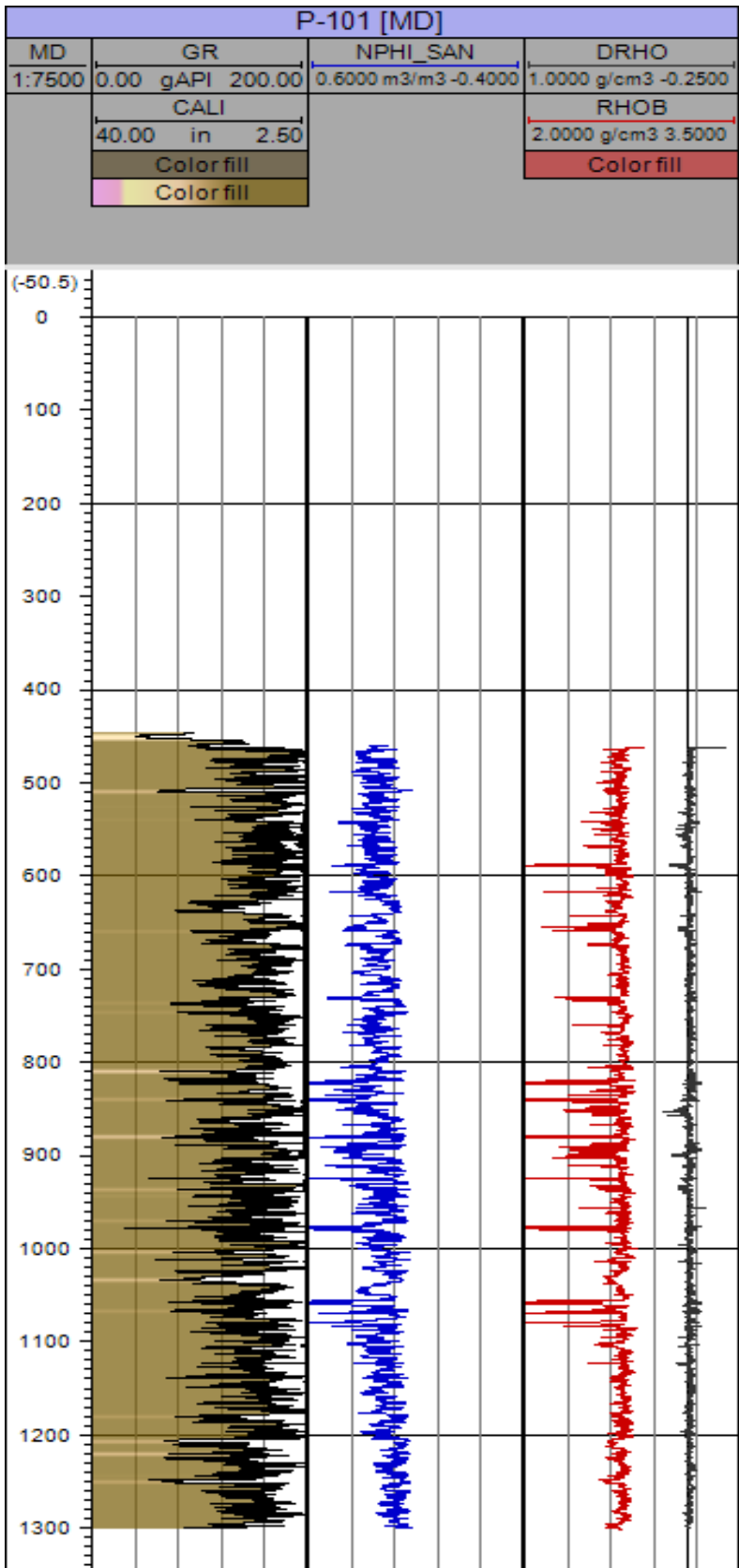
KB: 21m

TD: 1305.5m

Inventory of well logs



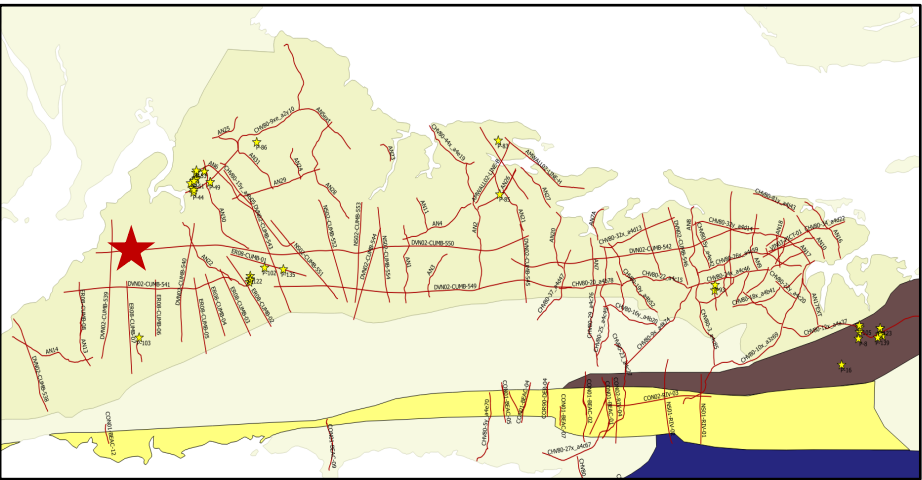
Composite logs



Nova Scotia Onshore Petroleum Atlas

Formation Top

Formation (Coal Seams)	Top (m)
Springhill #2 Seam	617
Springhill #6 Seam	ND
Springhill/Joggins Formation	765
Joggins Seam	820
Queen Seam	839.5
Rector Seam	880
Jubilee Seam	924.6
Kimberly Seam	977
Forty Brine Seam	1055
Fundy Seam	NP
Joggins/Little River Formation	1101



Well ID: P-103

Well Name: Newville Lake REI-B3-03

Well Type: CBM

Spud Date: Oct. 1994

Status: Plugged and Abandoned

Operator: Resource Enterprises Inc (REI)

Core: 33-828m (core 1)

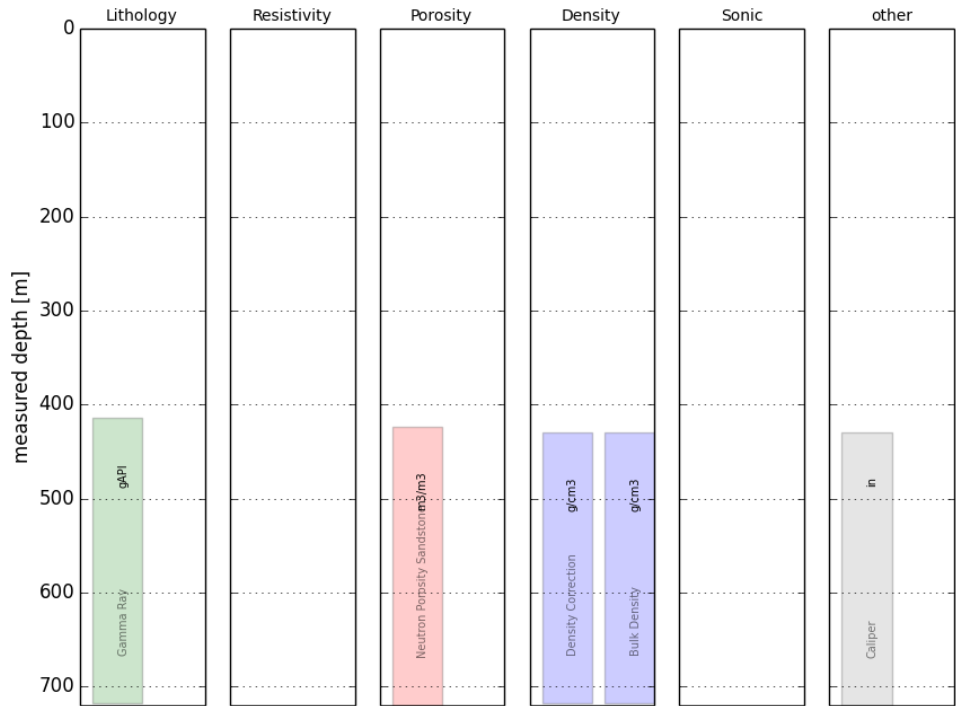
Surface Location: 394568 (Easting); 5045349 (Northing)

Coordinate Reference System: NAD 83/UTM Zone 20

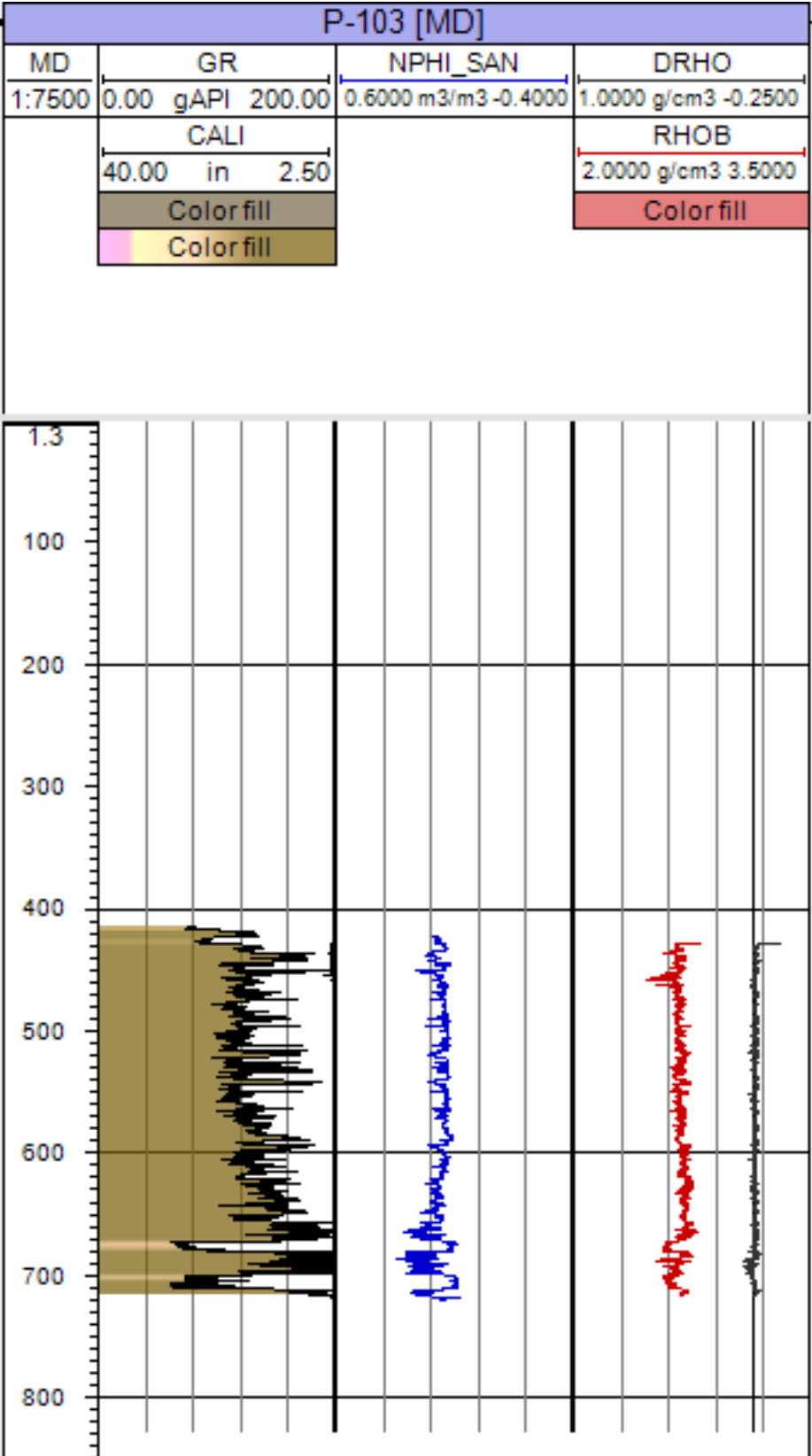
KB: 22.9m

TD: 828m

Inventory of well logs



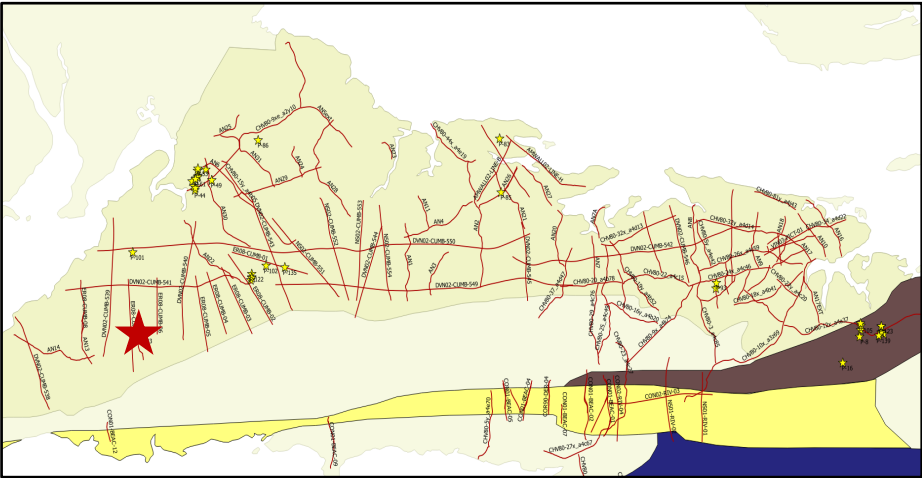
Composite logs



Nova Scotia Onshore Petroleum Atlas

Formation Top

Formation	Top (m)
Ragged Reef Formation	0
Springhill Mines Formation	619
Polly Brook Formation	798



Well ID: P-104

Well Name: Springhill/ Athol REI-B1-04

Well Type: CBM

Spud Date: Oct. 1994

Status: Plugged and Abandoned

Operator: Resource Enterprises Inc (REI)

Core: 0-1223m

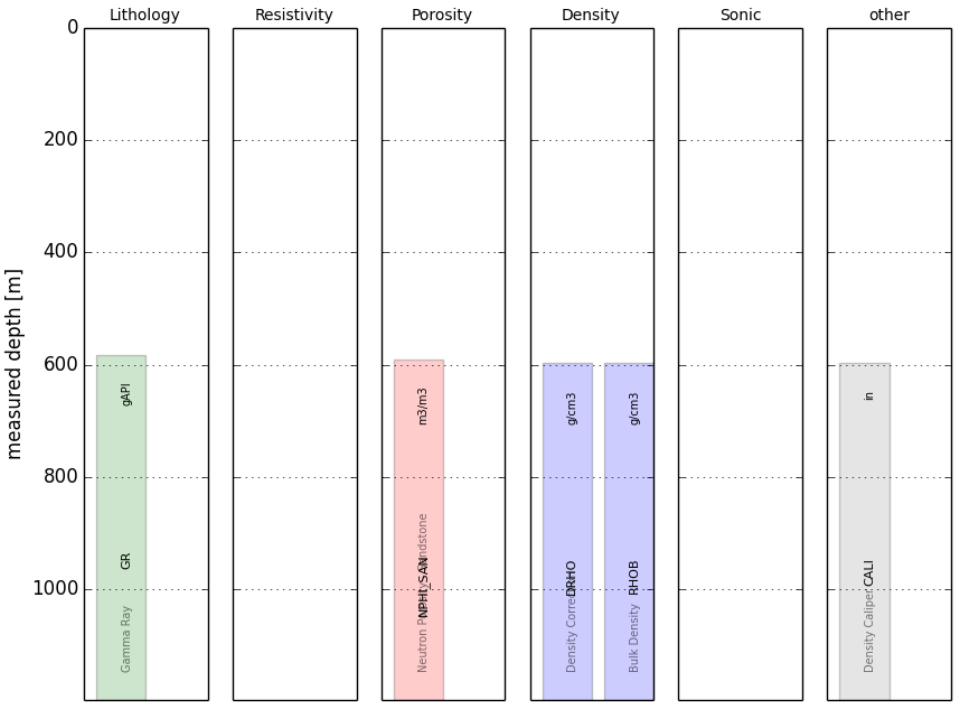
Surface Location: 414717 (Easting); 5054459 (Northing)

Coordinate Reference System: NAD 83/UTM Zone 20

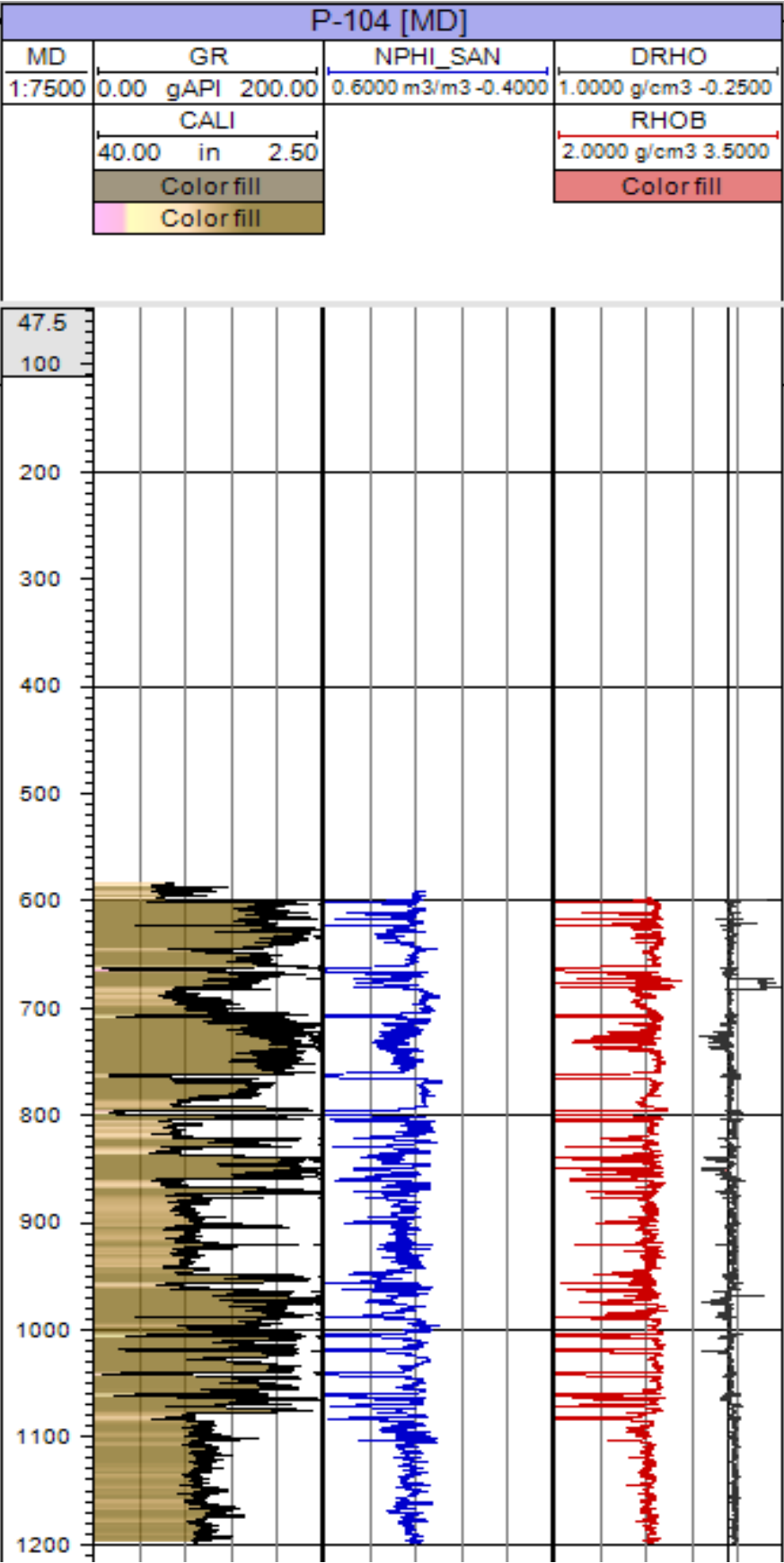
KB: 119m

TD: 1223m

Inventory of well logs



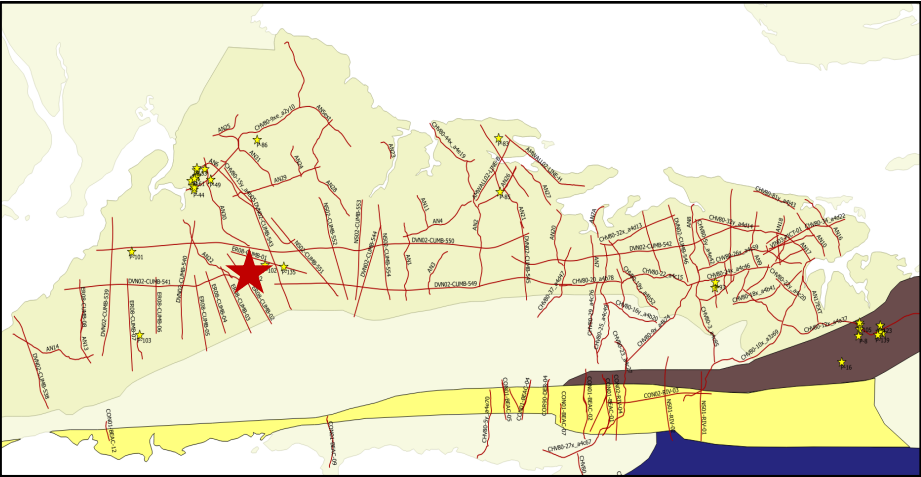
Composite logs



Nova Scotia Onshore Petroleum Atlas

Formation Top

Formation	Top (m)
Ragged Reef Formation	Surface
Springhill Mines Formation	134.95
Macleod	465.4
Harrison Seam	472.3
Rodney Seam	600.8
McCarthy Seam	623.2
MaCarrons Creek	646
SH #3 Seam	662
SH #1 Seam	761.2
Coal Mine Brook	772
SH #2 Seam	795.8
SH #7 Seam	1003.8
SH #6 Seam	1039.7
Gesner Equivalent	1118



Well ID: P-106

Well Name: Heather #1 (REI-SB-P2)

Well Type: CBM

Spud Date: Aug. 1996

Status: Plugged and Abandoned

Operator: Resource Enterprises Inc (REI)

Core: 1158-1161.6m (core 1), 1285.5-1292.8m (core 2) &
30-1328m (cutting)

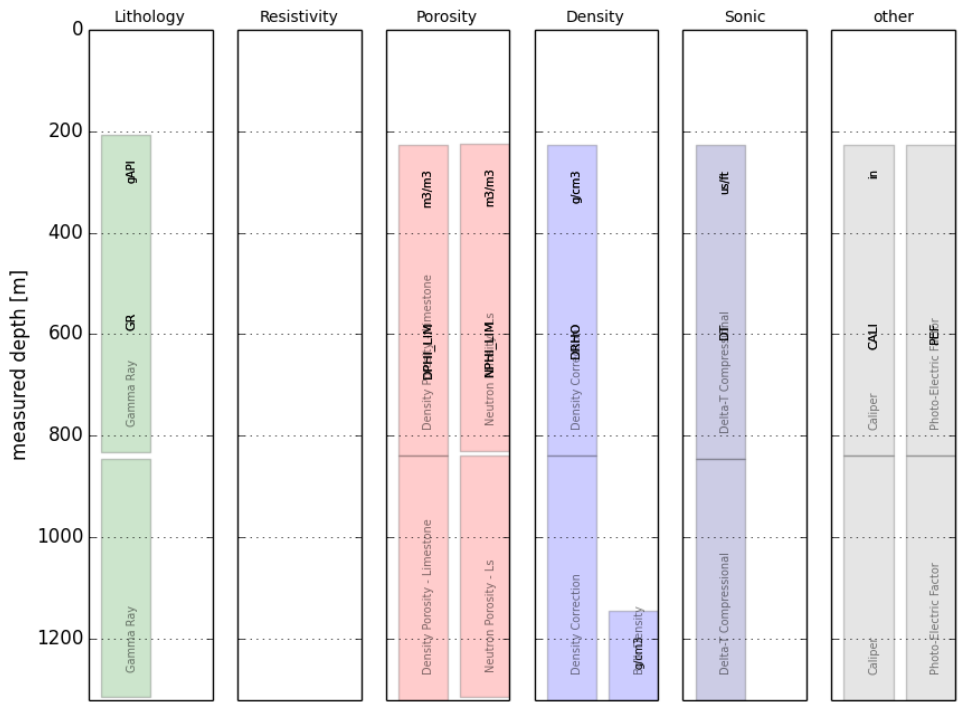
Surface Location: 526202(Easting); 5046322(Northing)

Coordinate Reference System: NAD 83/UTM Zone 20

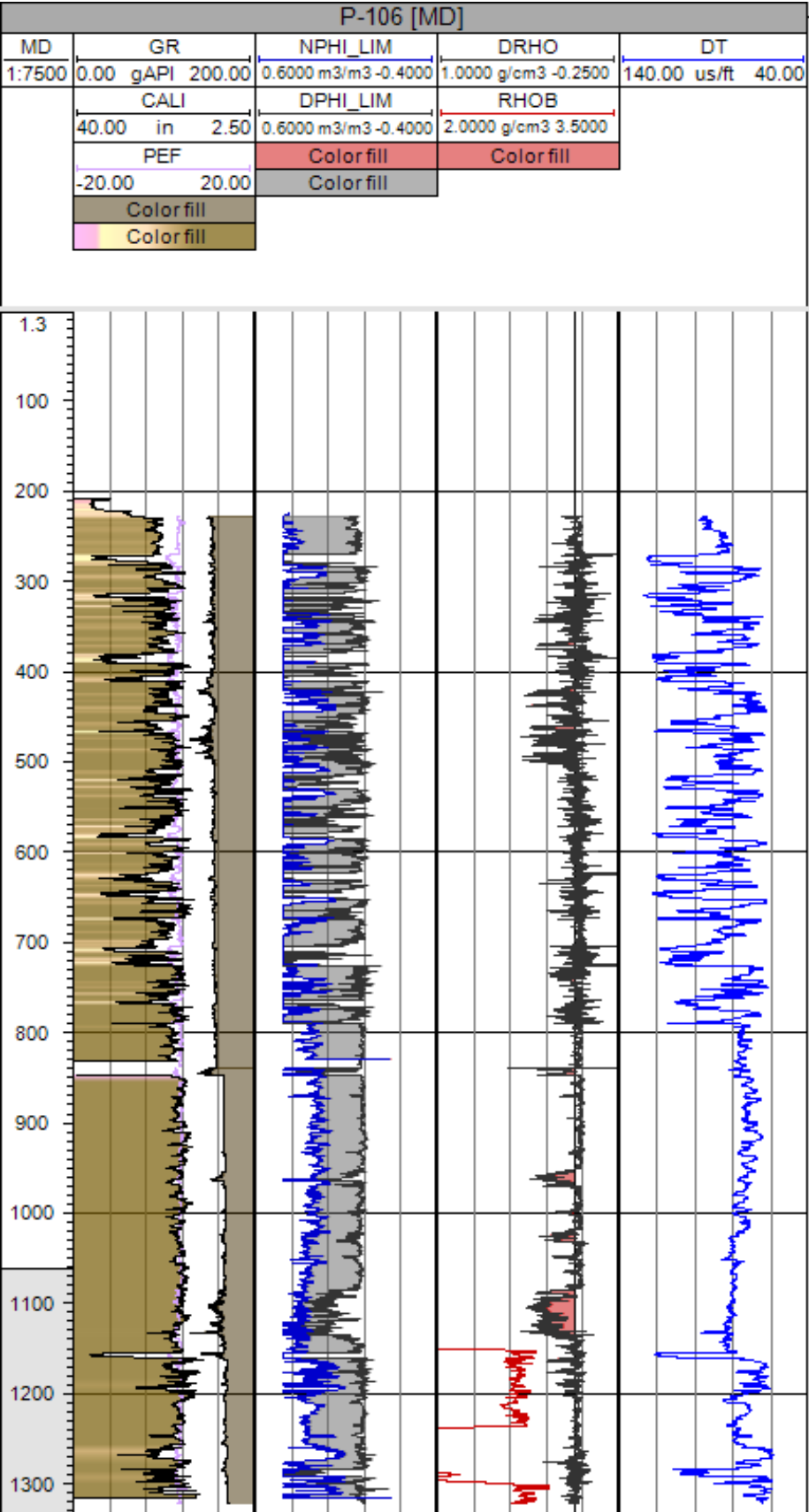
KB: 29.9m

TD: 1328m

Inventory of well logs



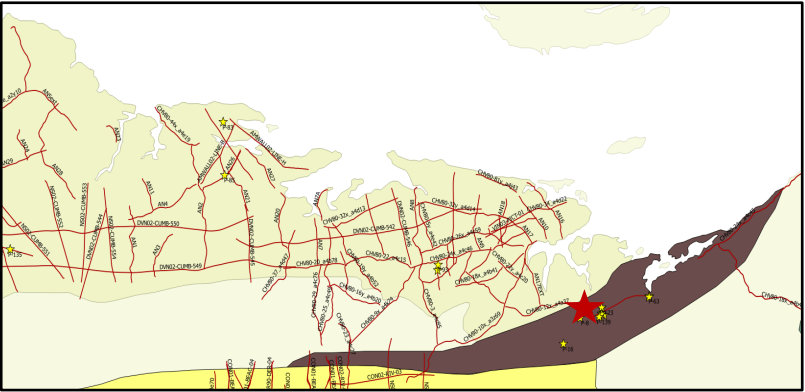
Composite logs



Nova Scotia Onshore Petroleum Atlas

Formation Top

Formation (Coal Seam)	Top (m)
Ford Seam	210
Cage Seam	272
Third Seam	313
Fleming Seam	380
MaGregor Seam	385
New Seam	406
Oil Coal Seam	455
Norah Seam	465
Priestville Seam	517
Trenton Seam	579
Abercrombie Seam	600
New Glasgow Seam	625
Stellarton Seam	643
Westville Seam	706
Alma Seam	721
Plymouth Member	764
Acamedy Seam	788
Acadia Seam	1156
Scott Seam	1284



Well ID: P-107

Well Name: Highland Mall REI-SB-P3

Well Type: CBM

Spud Date: Sep. 1996

Status: Plugged and Abandoned

Operator: Resource Enterprises Inc (REI)

Core: 254-262.2m(core 1), 274-280.5m(core 2), 339.5-344.4m
(core 3), 373-377m(core 4), 639-647.2m(core 5), 639-
647.2m(core 6) & 65-730m(cutting)

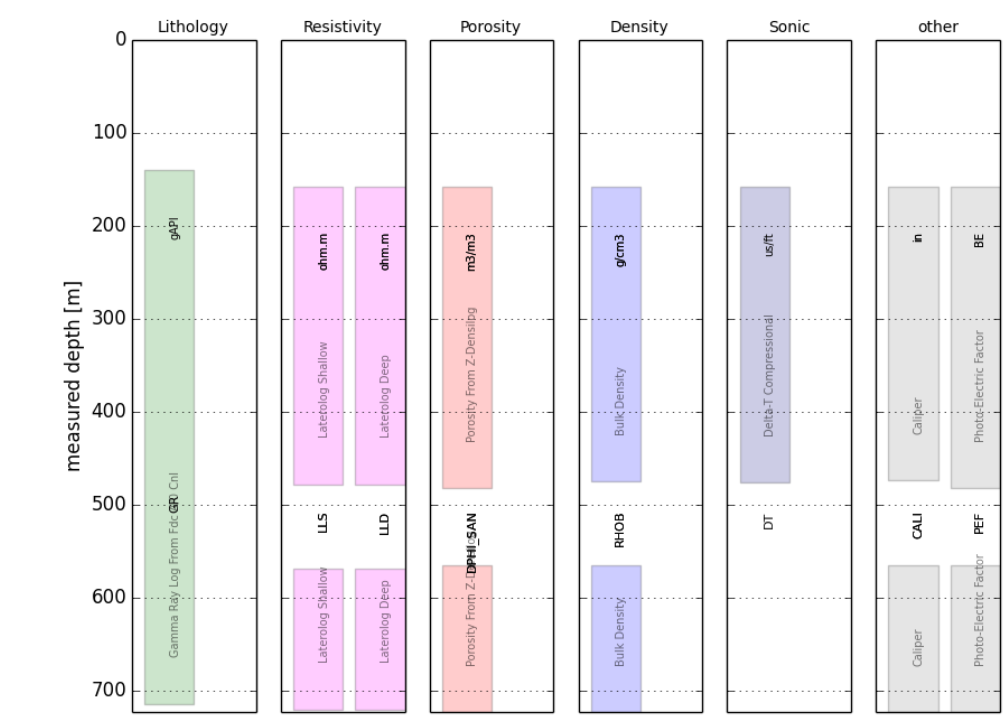
Surface Location: 526248(Easting); 5047394(Northing)

Coordinate Reference System: NAD 83/UTM Zone 20

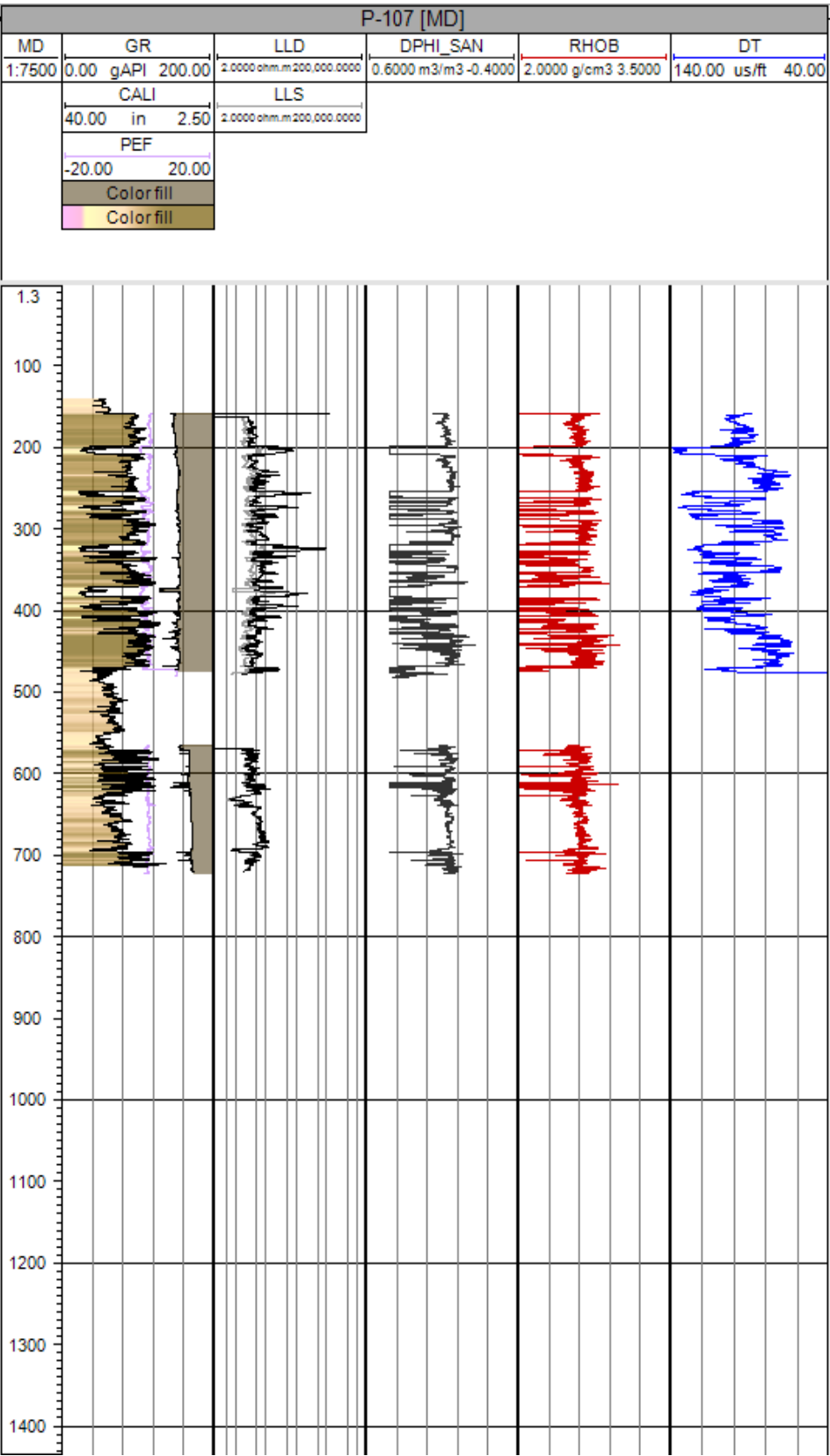
KB: 42.35m

TD: 723m

Inventory of well logs



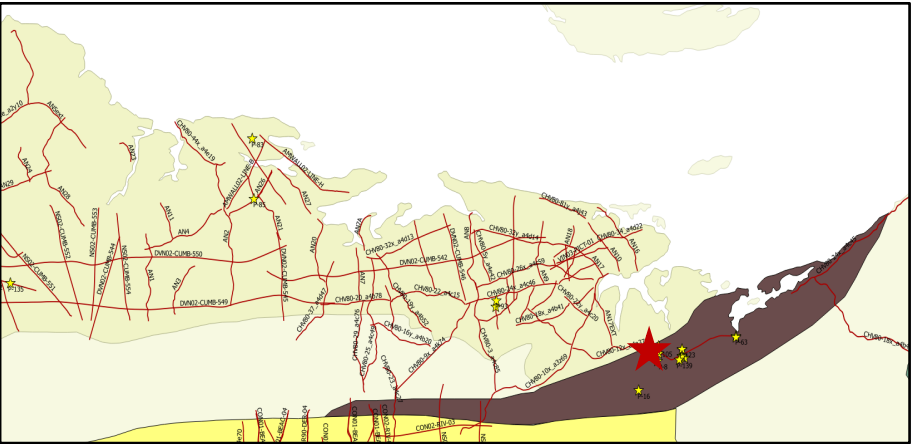
Composite logs



Nova Scotia Onshore Petroleum Atlas

Formation Top

Formation (Coal Seam)	Top (m)
Foord Seam	203.3
Cage Seam	254.3
Unnamed	267.0
Third Seam	272.2
Third Lower Seam	282.0
Purvis Seam	296.2
McGregor Seam	320.0
New Seam	371.8
Oil Seam	392.9
Norah Seam	407.6
Trenton Seam	471.3
Highland Sand	623.0



Well ID: P-115

Well Name: Priestville #1 (ECA400-2)

Well Type: CBM

Spud Date: Nov. 2002

Status: Plugged and Abandoned

Operator: Encana

Core: 20-912m(cutting)

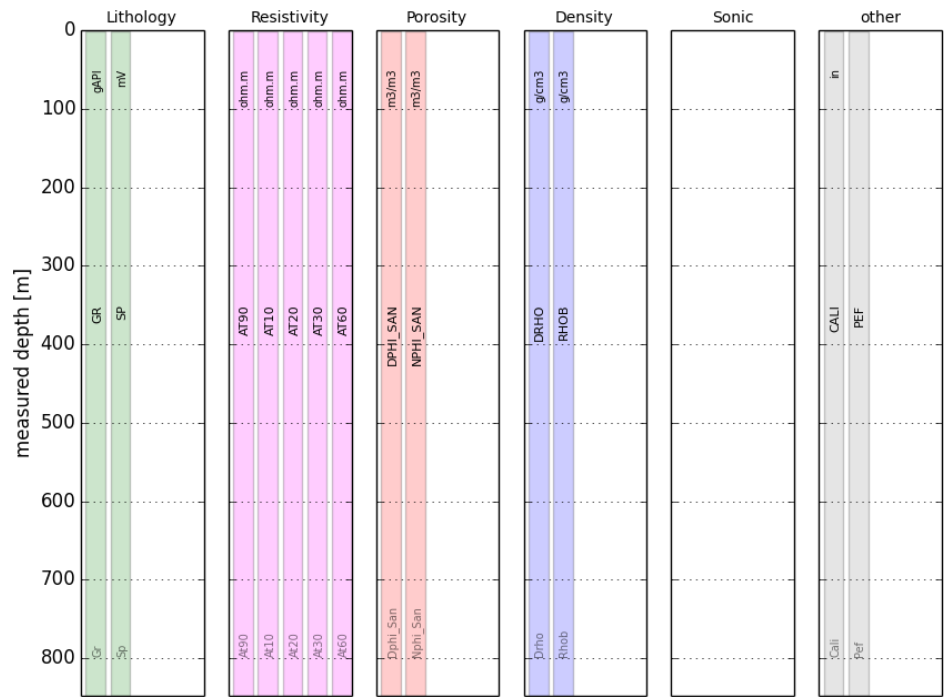
Surface Location: 529967(Easting); 5046825 (Northing)

Coordinate Reference System: NAD 83/UTM Zone 20

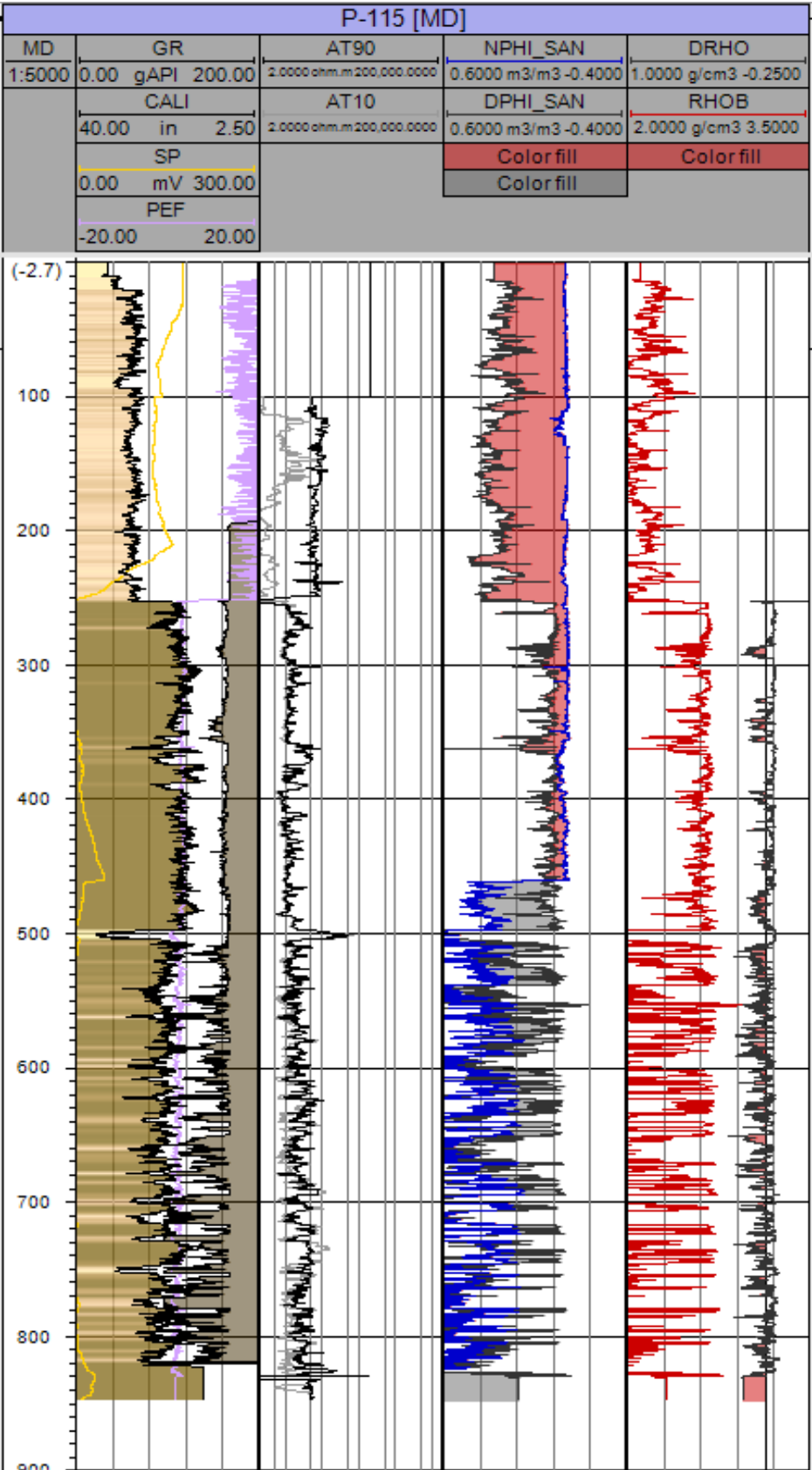
KB: 74.2m

TD: 912m

Inventory of well logs



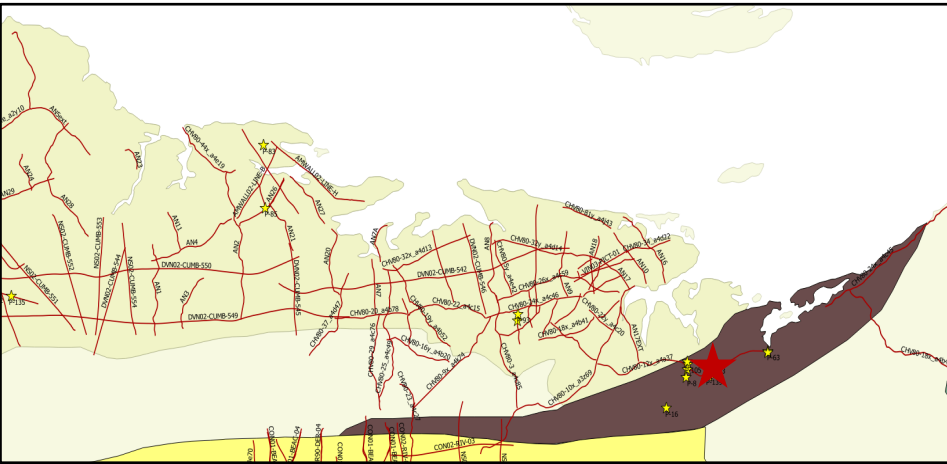
Composite logs



Nova Scotia Onshore Petroleum Atlas

Formation Top

Formation(Coal Seam)	Top (m)
Coal Brook Seam	0
McLeod Seam	361.0
Foord Seam	498.0
Cage Seam	539.5
Third Seam	560.5
Flemming McGegor Seam	607.5
New Seam	660.0
Norah Seam	698.0
Trenton Seam	765.0
New Glasgow Seam	810.5
Stellarton Seam	836.0



Well ID: P-122

Well Name: Stealth Coal Mine Brook #3

Well Type: CBM (horizontal well)

Spud Date: Jan. 2006

Status: Plugged and Abandoned

Operator: Stealth Venture Ltd

Core: 0 –1261.2m(MD)/ 1154.88m(TVD)

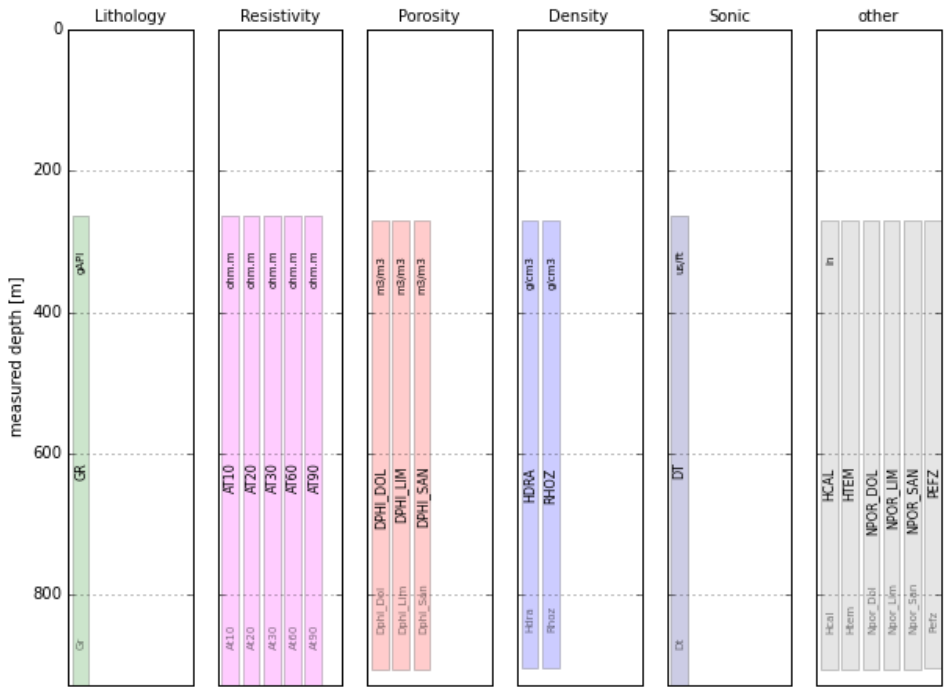
Surface Location: 414933(Easting); 5055401(Northing)

Coordinate Reference System: NAD 83/UTM Zone 20

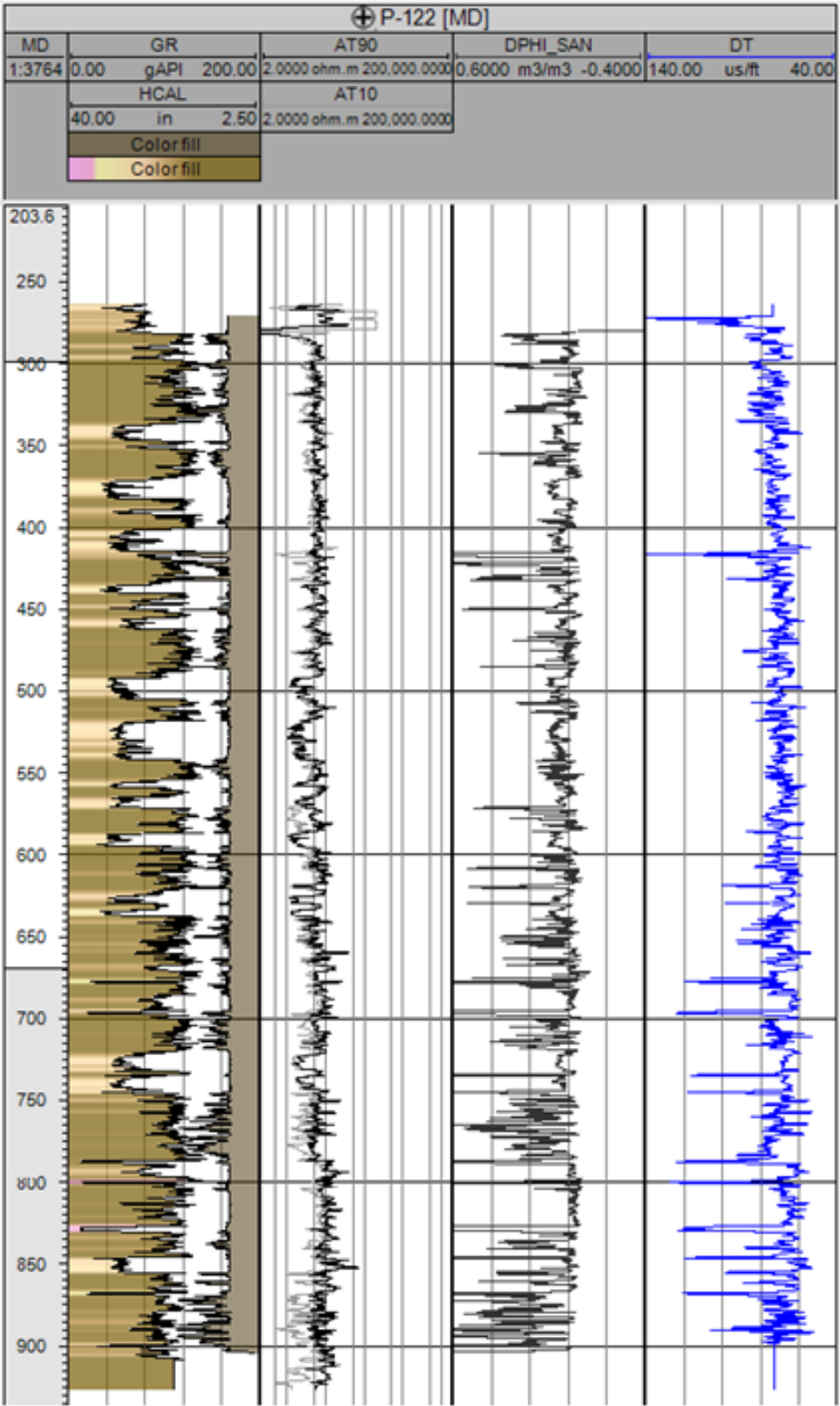
KB: 105.80m

TD: 1270.13m(TVD); 1687.60m(MD)

Inventory of well logs



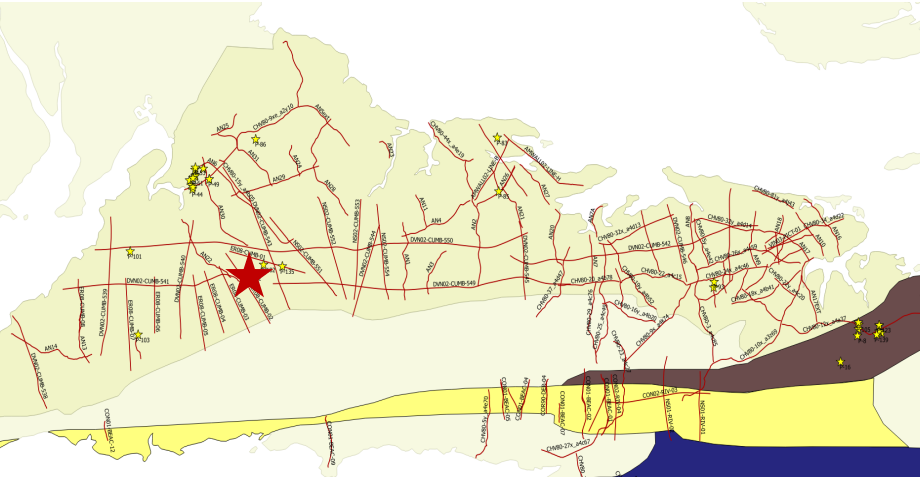
Composite log



Nova Scotia Onshore Petroleum Atlas

Formation Top

Formation(Coal Seam)	Top (m)
Marker K	652.5
Marker L	675.0
Rodney	695.0
Number 3 Coal Upper	734.0
Number 3 Coal Lower	744.5
Number 1 Coal Upper	786.0
Number 1 Coal Lower	799.0
Number 2 Coal	827.0
Marker O Upper	845.5
Marker O Lower	868.0
Marker P	900.0
Marker R	983.0
Marker S	1016.5
Marker T	1059.0
Number 7 Coal	1083.0
Number 7 Coal Lower	1110.6
Number 6 Coal	1261.2



Composite log

Well ID: P-123

Well Name: Priestville #4

Well Type: CBM

Spud Date: May. 2006

Status: Plugged and Abandoned

Operator: Stealth Ventures Ltd

Core: 0-908m(MD)(cutting)

Surface Location: 530128(Easting); 5046923(Northing)

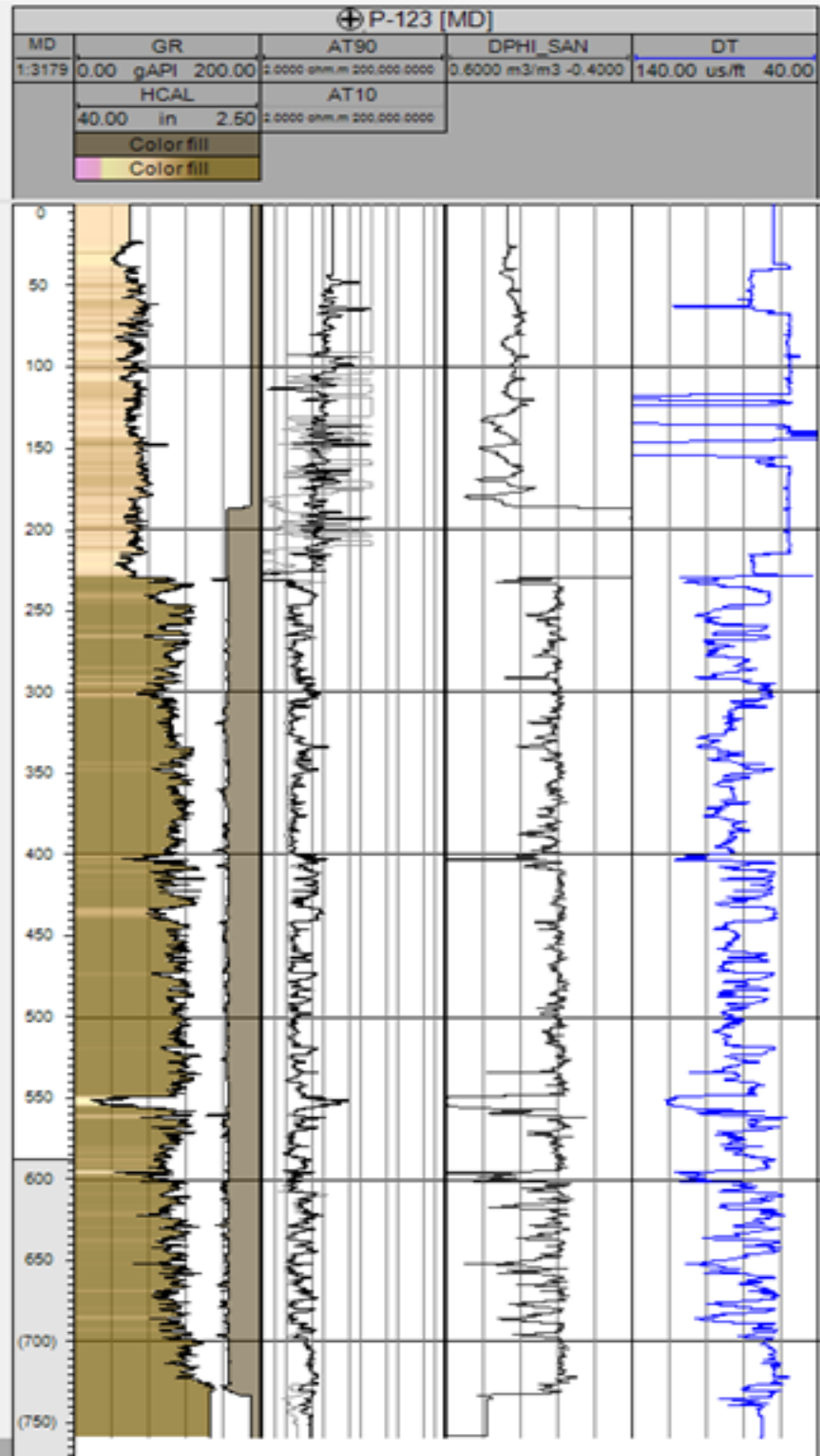
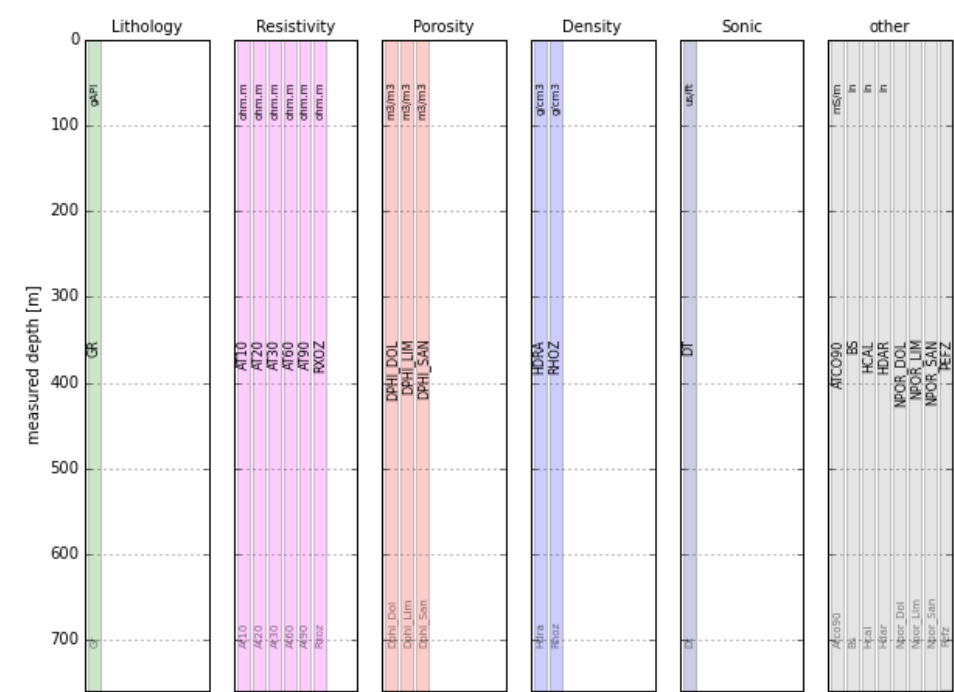
Coordinate Reference System: NAD 83/UTM Zone 20

KB: 79.1m

TD: 908m (MD)

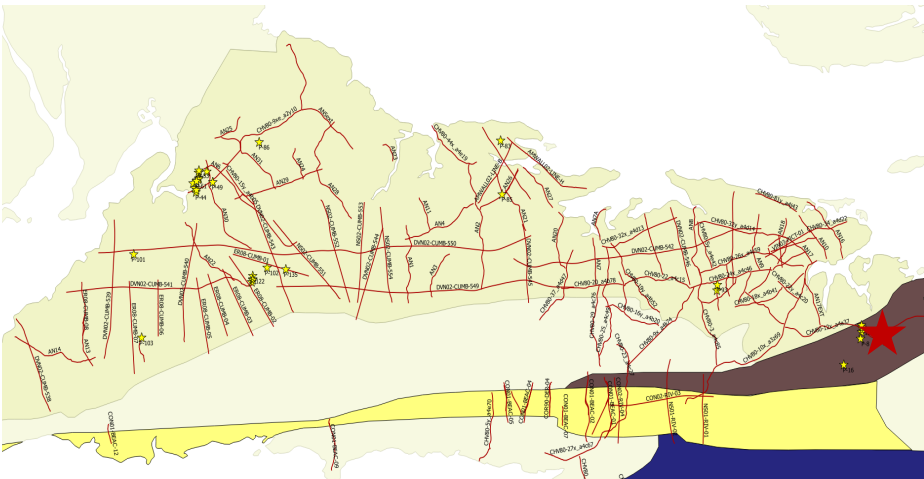
Note: Gas readings were very significant throughout 549-557m(MD)

Inventory of well logs



Formation Top

Formation(Coal Seam)	Top (m)
Coal Brook Member	400
Foord Coal Seam	549
Cage Coal Seam	595
Third Coal Seam	616
Flemming McGregor	652
New Coal Seam	685
Norah Coal Seam	734



Composite log

Well ID: P-124

Well Name: Stealth Ventures Coal Mine Brook #12

Well Type: CBM (horizontal well)

Spud Date: Aug. 2006

Status: Plugged and Abandoned

Operator: Stealth Ventures Ltd

Core: 0-1638m(cutting)

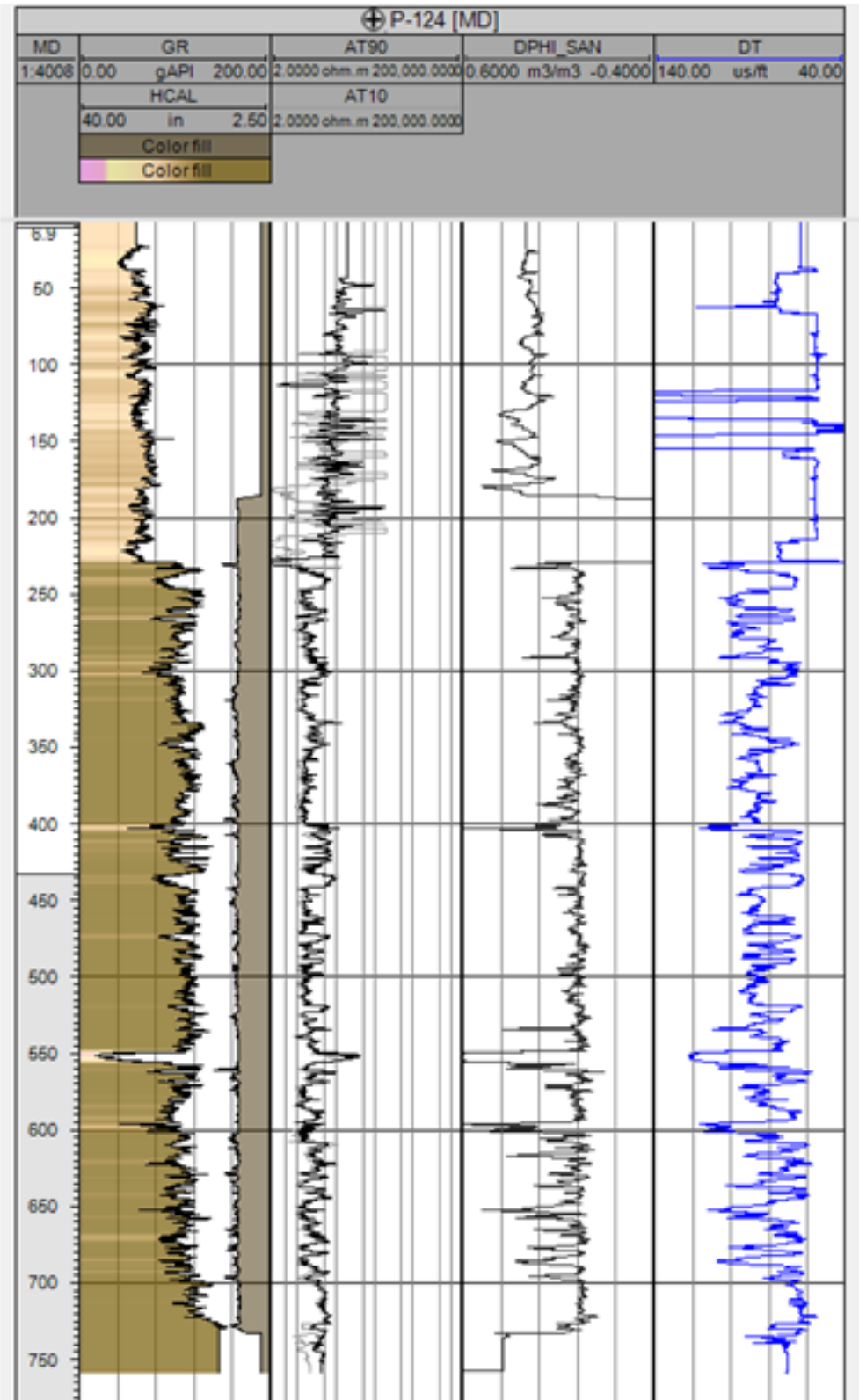
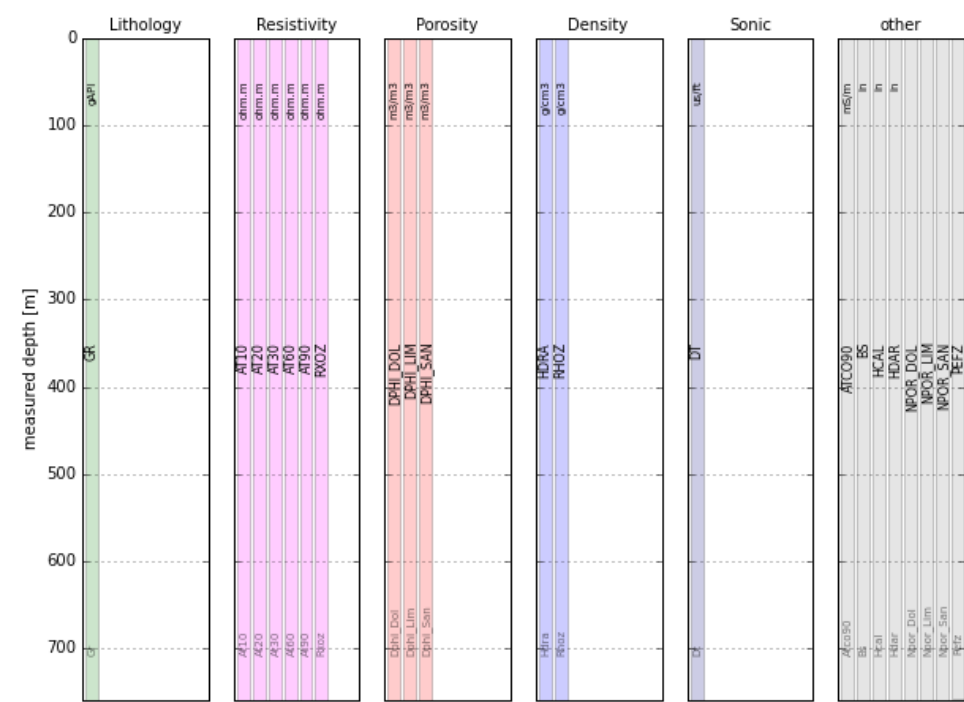
Surface Location: 414889(Easting); 5054830(Northing)

Coordinate Reference System: NAD 83/UTM Zone 20

KB: 107.9m

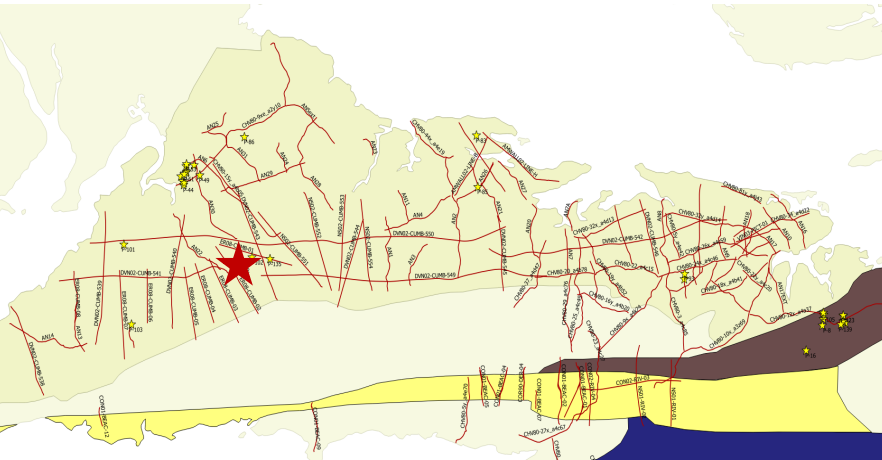
TD: 1040.2m(TVD); 1638.4m(MD)

Inventory of well logs



Nova Scotia Onshore Petroleum Atlas

Formation Top	
Formation(Coal Seam)	Top (m)
Harrison	490?
Marker F	534.0
Marker J	569.5
Marker K	616.5
Rodney	639.0
No.3	677.0
No.1	724.0
No.2(Upper)	780.5
Marker O (Lower)	814.5
Marker P	853.0
Marker R	920.0
Marker S	962.0
Marker T	987.0
No.7	1012.5
No.7(Lower)	1030.5
No.6	1068.5
Marker U??	1090.0
Marker V??	1119.0



Well ID: P-134

Well Name: ECE-11-01

Well Type: CBM

Spud Date: Jan. 2011

Status: Plugged and Abandoned

Operator: East Coast Energy

Core: 7-678m(core 1)

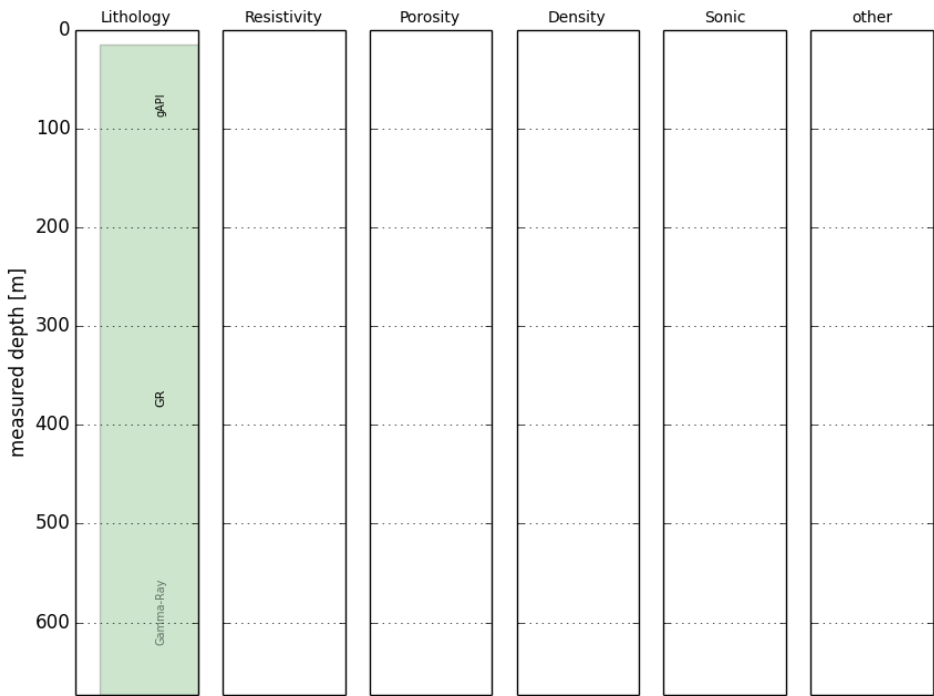
Surface Location: 529976(Easting); 5045865(Northing)

Coordinate Reference System: NAD 83/UTM Zone 20

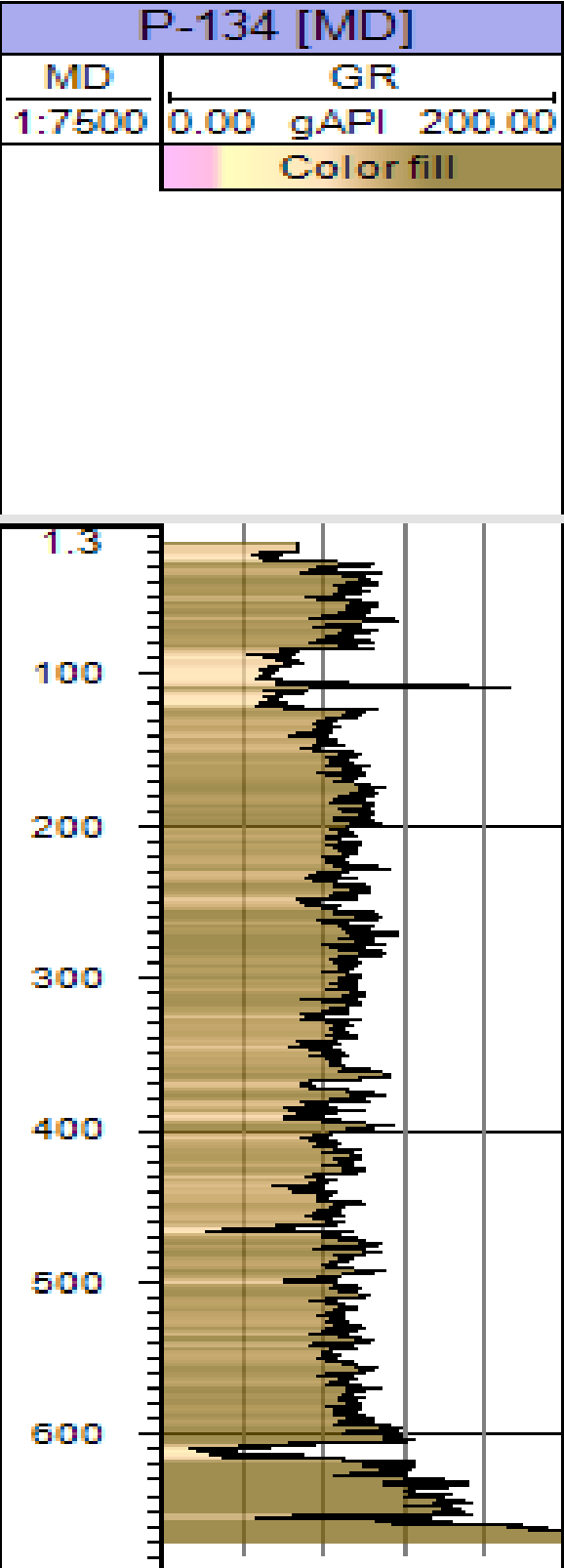
KB: 43m

TD: 678m

Inventory of well logs



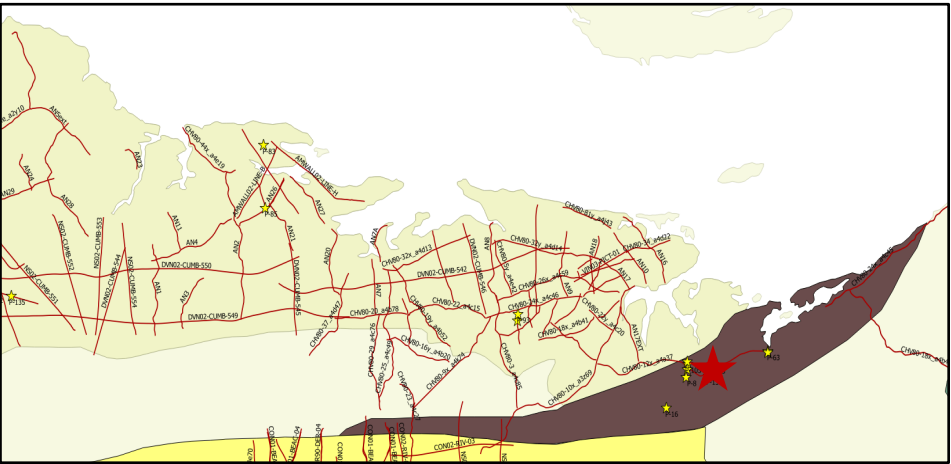
Composite logs



Nova Scotia Onshore Petroleum Atlas

Formation Top

Formation/Member	Top (m)
Coal Brook Member	7.0
Albion Member	610.5



Composite logs

Well ID: P-135

Well Name: Eastrock Lauren #1

Well Type: Vertical well

Spud Date: Dec. 2011

Status: Plugged and Abandoned

Operator: Eastrock Resource Ltd

Core: 0-946.7m(cutting)

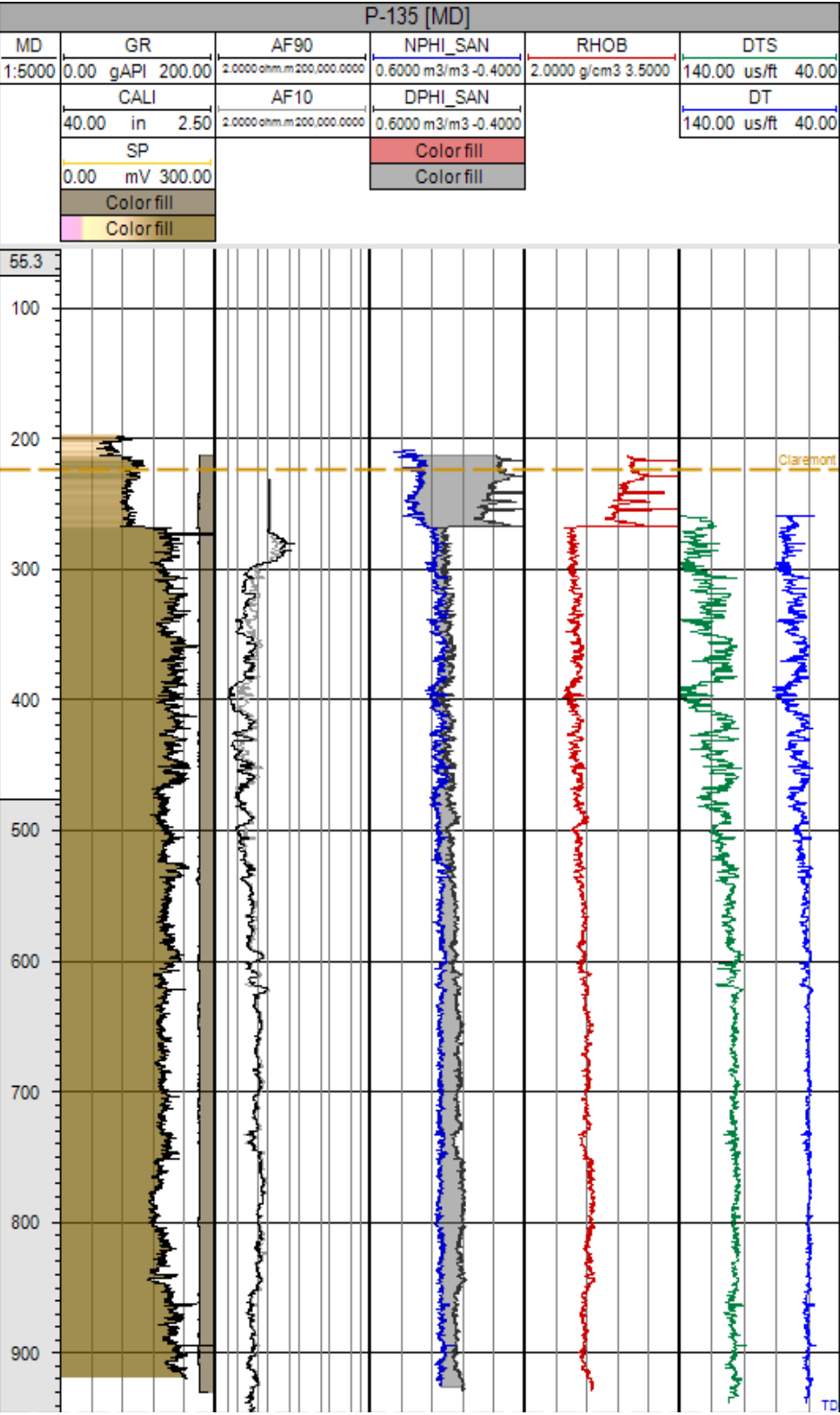
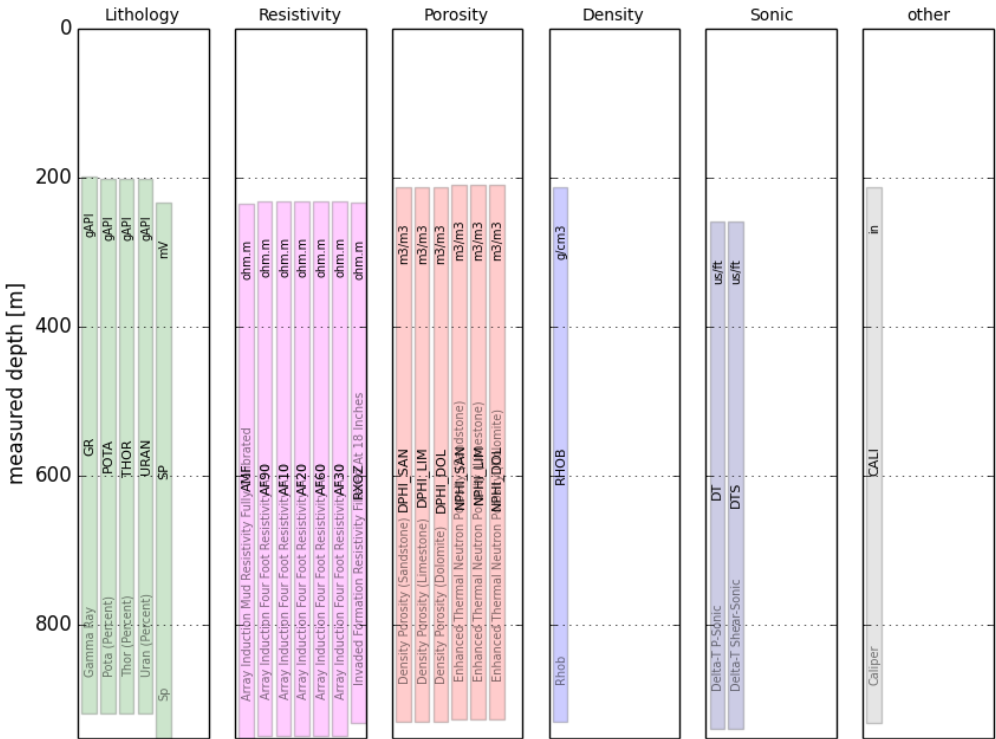
Surface Location: 420980(Easting); 5056480 (Northing)

Coordinate Reference System: NAD 83/UTM Zone 20

KB: 123m

TD: 946.7m

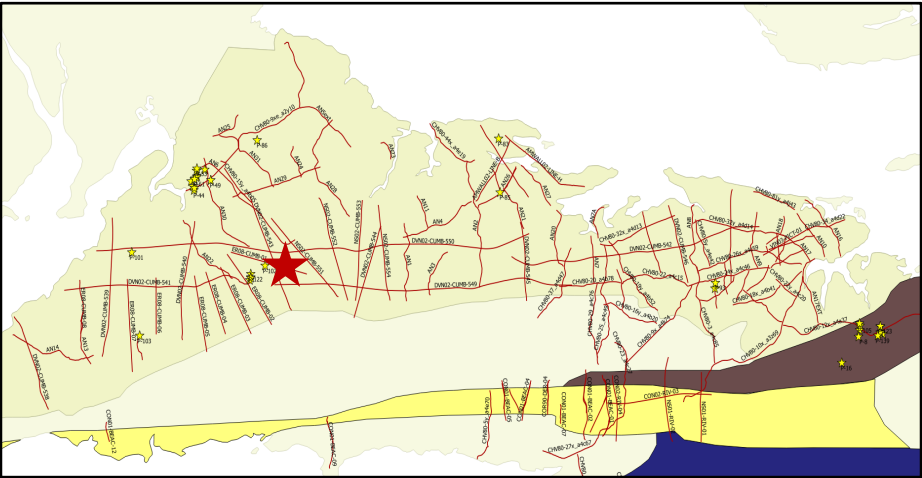
Inventory of well logs



Nova Scotia Onshore Petroleum Atlas

Formation Top

Formation	Top (m)
Boss Point Formation	0
Claremont Formation	224



Well ID: P-138

Well Name: ECE-13-P1

Well Type: CBM

Spud Date: Nov. 2013

Status: Plugged and Abandoned

Operator: East Coast Energy Inc

Core: 0-700m(cutting)

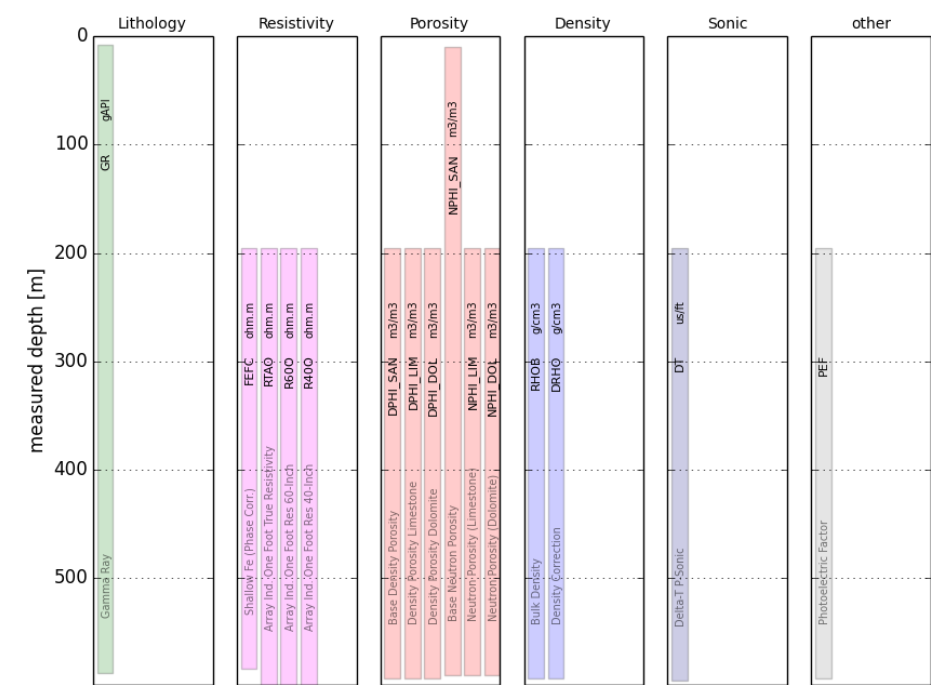
Surface Location: 529996(Easting); 5045966(Northing)

Coordinate Reference System: NAD 83/UTM Zone 20

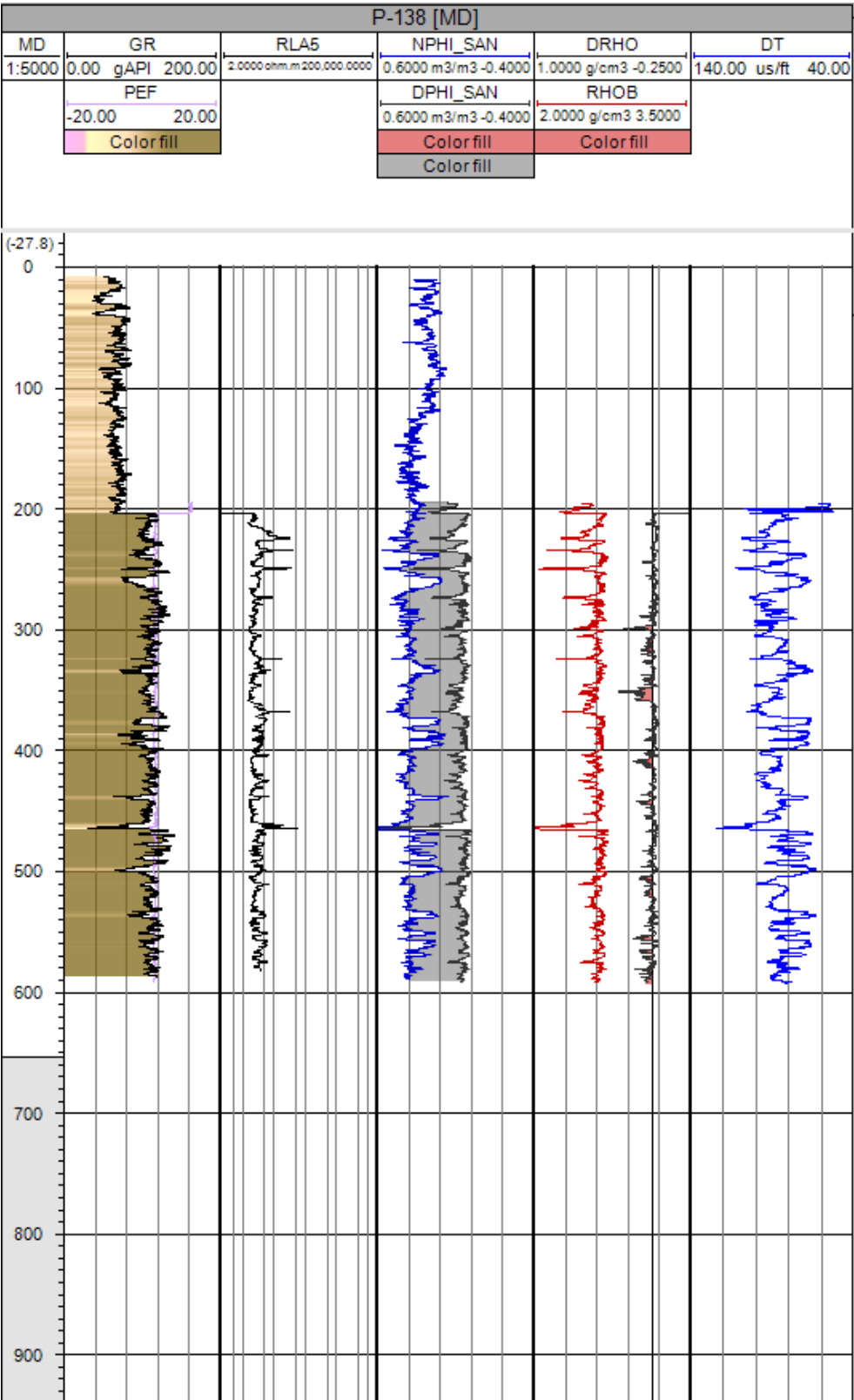
KB: 39.9m

TD: 700m

Inventory of well logs



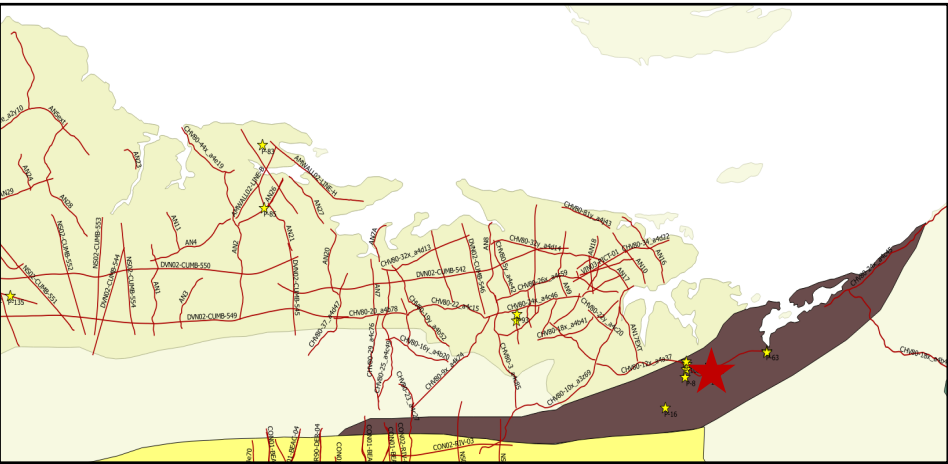
Composite logs



Nova Scotia Onshore Petroleum Atlas

Formation Top

Formation/Member	Top (m)
Coal Brook Member	0
Albion Member	606.87



Well ID: P-139

Well Name: ECE-13-P2 ST

Well Type: CBM (horizontal well)

Spud Date: Nov. 2013

Status: Pending further evaluation

Operator: East Coast Energy Inc

Core: 565-1259m(cutting)

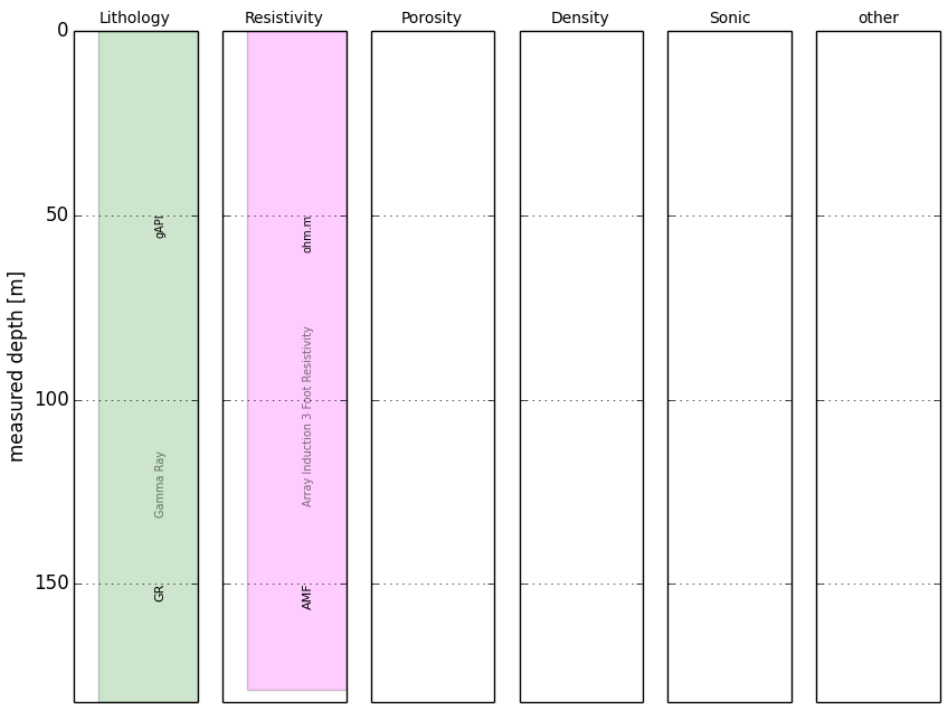
Surface Location: 529557(Easting); 5045390(Northing)

Coordinate Reference System: NAD 83/UTM Zone 20

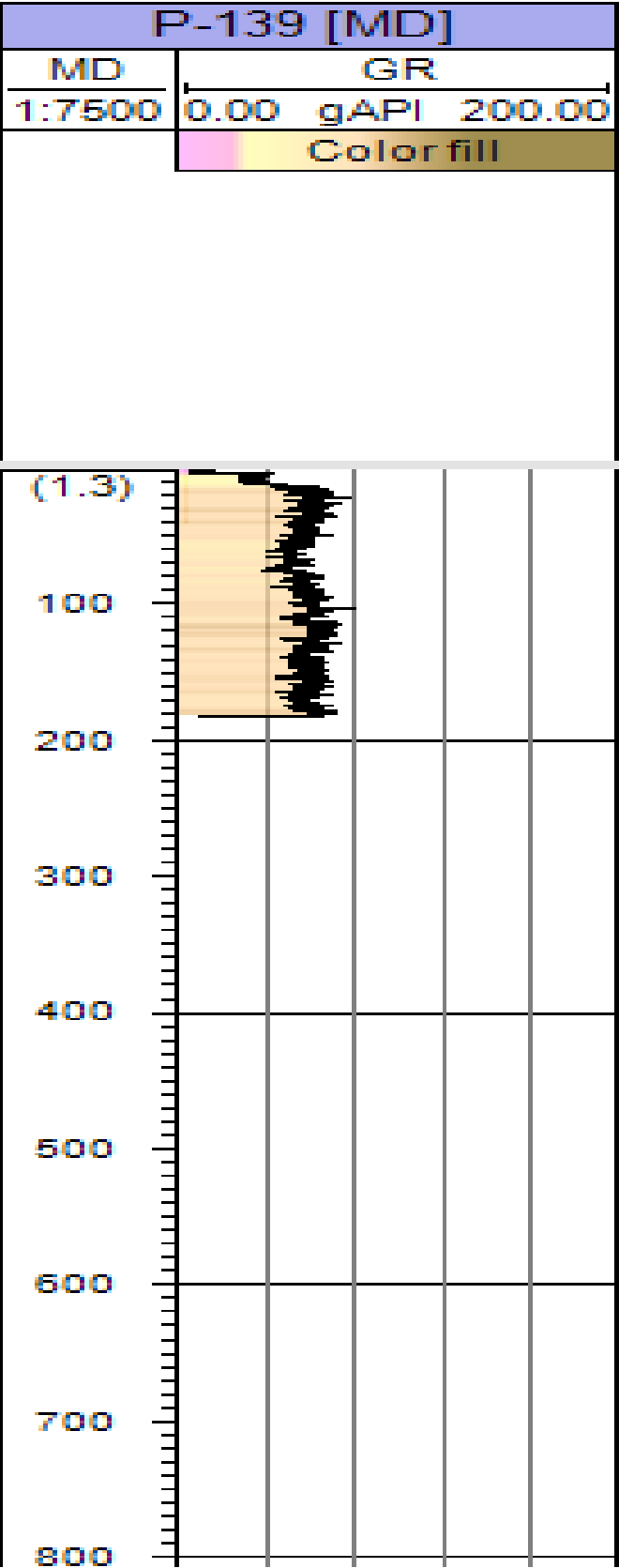
KB: 44.7m

TD: 617.9m (TVD); 1259.0m (MD)

Inventory of well logs



Composite logs



Nova Scotia Onshore Petroleum Atlas

Formation Top

Formation	Top (m)
Coal brook Member	538(TVD); 565(MD)
Albion Member	568(TVD); 628(MD)

