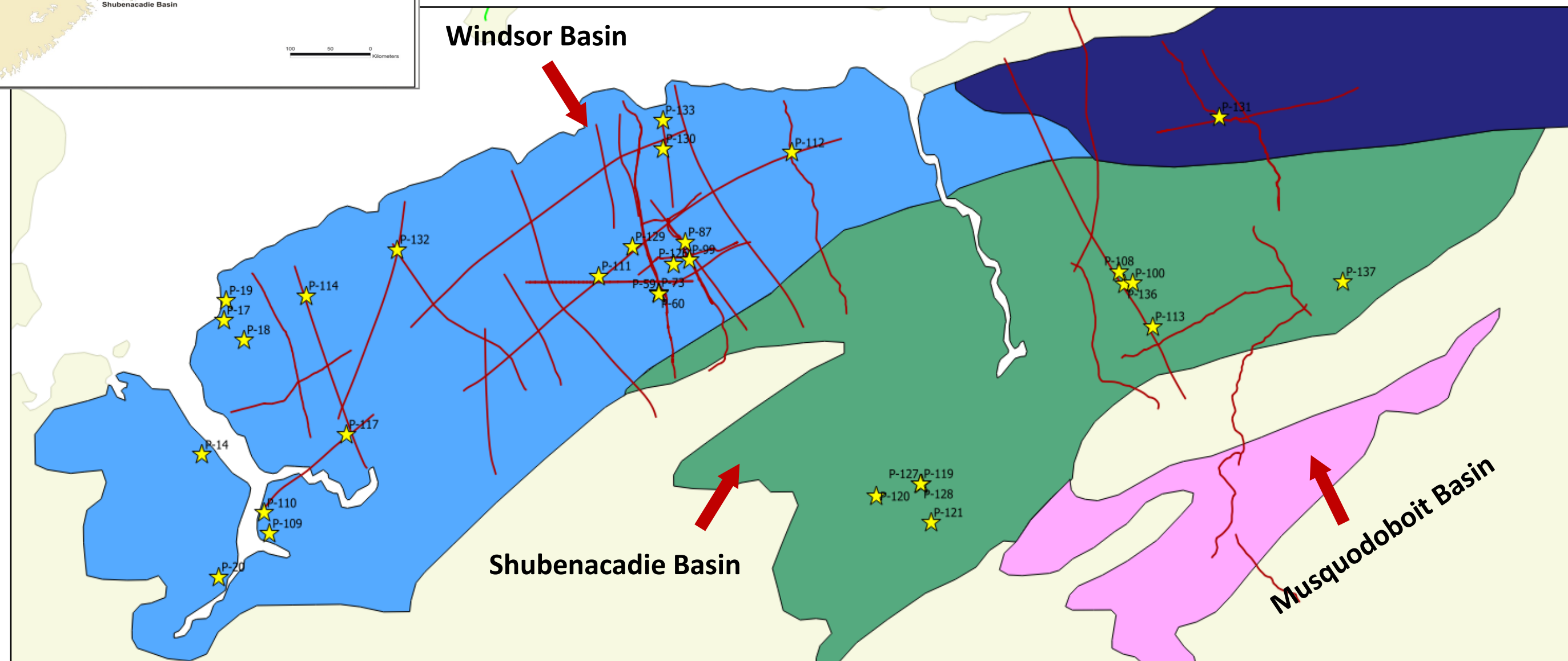
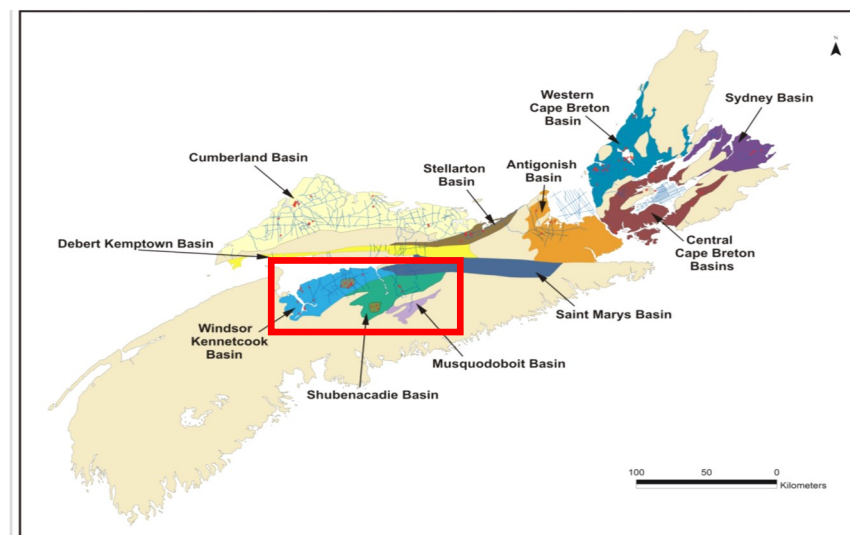


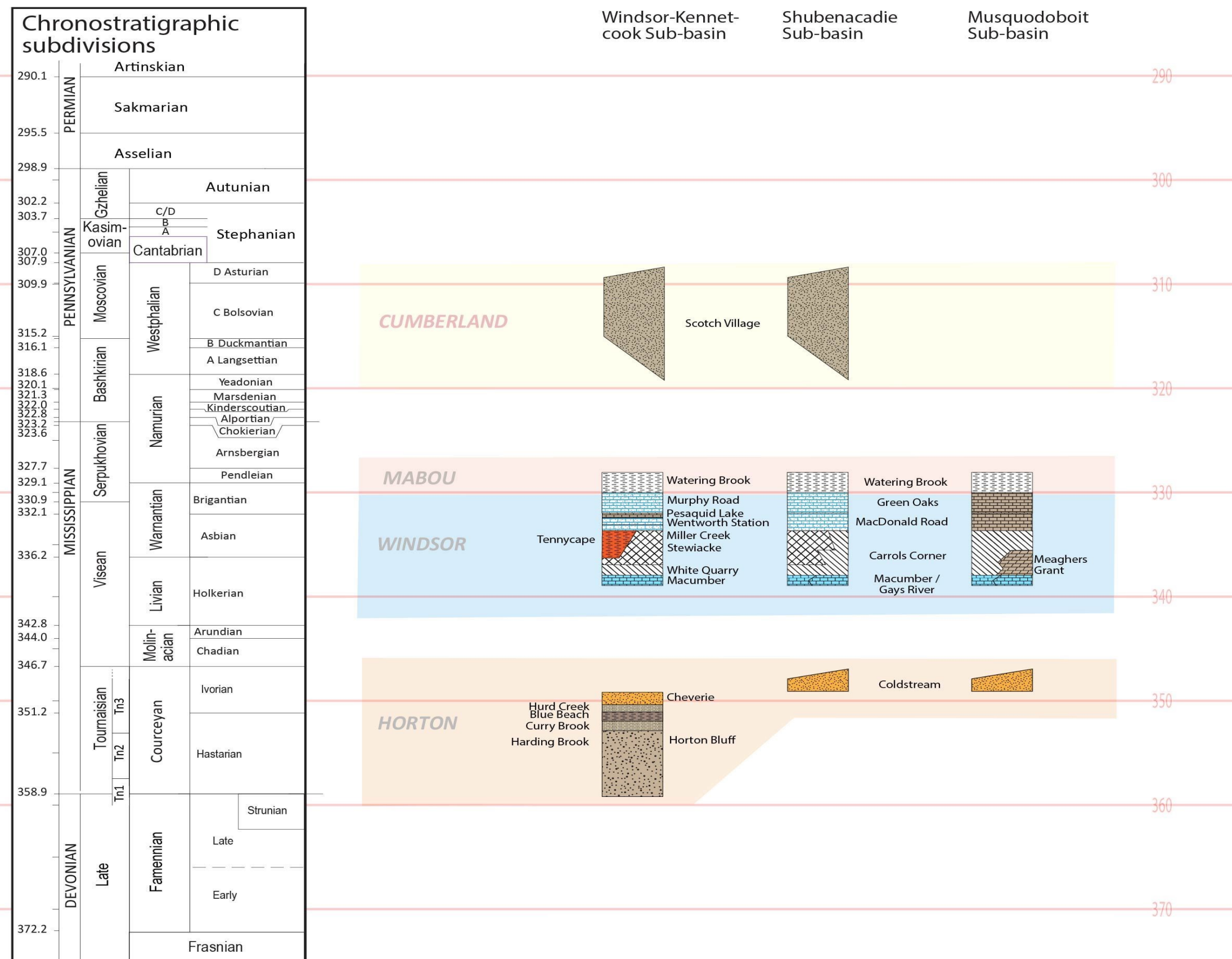
NSDOE Open File Report 2017-08

Schedule of Petroleum Wells, onshore Nova Scotia

Part 3: Windsor Region



Location Map of Windsor Region



Stratigraphic Column of Windsor Region (Waldron, 2017)

Well ID	Well Name	Company	Spud Date	KB (m)	Total Depth (m)	Latitude Longitude	Basin	Status Description
P-87	Noel #1	SOQUIP A.C.C.et al	July 18, 1975	69.9	1,447.8	45°12'45" N 63°42'17" W	Windsor Basin	Plugged and Abandoned
P-111	Coolbrook	Northstar Energy	Febuary 19, 2001	63.3	1,349.0	45°11'22.56" N 63°47'27.72" W	Windsor Basin	Plugged and Abandoned
P-112	Creelman	Northstar Energy	April 22, 2001	150.73	1,407.0	45°16'21.85" N 63°35'53.93" W	Windsor Basin	Plugged and Abandoned
P-113	EOG Cloverdale #1	EOG Resources	October 7, 2001	82.6	923.0	45°09'19.509" N 63°14'20.200" W	Windsor Basin	Plugged and Abandoned
P-114	Devon Cheverie #1	Devon Canada (formerly Northstar Energy)	November 10, 2001	93.8	1,394.0	45°10'34.409" N 64°04'59.984" W	Windsor Basin	Plugged and Abandoned
P-117	Cogmagun #1	Oiltec Resources Ltd.	September 18, 2003	53.67	495.74	45°4'56.9" N 64°02'35.5" W	Windsor Basin	Plugged and Abandoned
P-126	Kennetcook #1	Elmworth Energy	August 26, 2007	61.9	1385	45°11'50.743" N 63°42'57.830" W	Windsor Basin	Suspended
P-129	Kennetcook #2	Elmworth Energy	September 18, 2007	94.8	1935	45°12'34.237" N 63°45'24.460" W	Windsor Basin	Suspended
P-130	Elmworth N-14-A/11-E-5	Elmworth Energy	July 7,2008	73.22	2618	45°16'32.053" N 63°43'34.358" W	Windsor Basin	Suspended
P-131	Camden 100/G-40-A/11-E-06	Forent Energy Ltd.	August 23, 2008	190	1464	45°17'49.309" N 63° 10'18.437" W	Windsor Basin	Plugged and Abandoned
P-132	O-61-C/11-E-4	Elmworth Energy	August 24,2008	66	2955	45°12'27.000" N 63° 59'30.034" W	Windsor Basin	Suspended
P-133	E-38-A/11-E-5	Elmworth Energy	October 22, 2008	51	1495	45o17'41.463" N 63o 43'36.961" W	Windsor Basin	Suspended
P-108	Alton 99-1	Hunt Oil Company	July 22, 1999	53.65	1,282.0	45°11'31.1" N 63°16'19.61" W	Shubenacadie Basin	Plugged and Abandoned
P-119	Barney's Brook #1	EOG Resources Inc.	September 21, 2005	47.02	749.0	45°02'56.877" N 63°28'08.694" W	Shubenacadie Basin	Plugged and Abandoned
P-120	Hardwoodlands #1	EOG Resources Inc.	November 3, 2005	39	835.0	45°01'26.24" N 63°30'49.801" W	Shubenacadie Basin	Plugged and Abandoned
P-121	Milford Station #1	EOG Resources Inc.	December 2, 2005	34	870.0	45°01'22.062" N 63°27'33.271" W	Shubenacadie Basin	Plugged and Abandoned
P-128	Morgan	Forent Energy Ltd.	September 16, 2007	43	655	45°02'56.272" N 63°28'9.452" W	Shubenacadie Basin	Plugged and Abandoned
P-136	Forent Alton #1 E- 49-C/11-E-03	Forent Energy Ltd.	Feb 14,2012	40.23	996	45°11'6.682" N 63° 16' .601" W	Shubenacadie Basin	Plugged and Abandoned
P-137	Forent South Branch #1 K-70-D/11-E-03	Forent Energy Ltd.	April 19,2012	55.9	784	45°11'8.708" N 63° 02'52.342" W	Shubenacadie Basin	Plugged and Abandoned

Petroleum Wells with LAS in Windsor and Shubenacadie basins

Well ID	Well Name	Company	Spud Date	KB (m)	Total Depth (m)	Latitude Longitude	Basin	Status Description
P-14	Unknown	Unknown	1902	26	396.2	45°04'07" N±10" 64°11'12" W±15"	Windsor Basin	Plugged and Abandoned
P-17	Cheverie No. 1; NSDM Record No. 90	Nova Scotia Oil & Gas Company	1903	0	582.2	45°09'35" N±10" 64°09'54" W±10"	Windsor Basin	Plugged and Abandoned
P-18	Unknown	Nova Scotia Oil & Gas Company	1903	19	579.1	45°08'47" N±15" 64°08'42" W±22"	Windsor Basin	Plugged and Abandoned
P-19	Unknown	Nova Scotia Oil & Gas Company (?)	1903	1	304.8	45°10'23" N±30" 64°09'45" W±30"	Windsor Basin	Plugged and Abandoned
P-20	Falmouth Station No. 1	Unknown	1911	30	582.5	44°59'09" N±10" 64°10'13" W±15"	Windsor Basin	Plugged and Abandoned
P-59	Anthony #1	Nova Scotia Oil & Gas Company	1944	44	194.0	45°10'39" N±20" 63°43'54" W±32"	Windsor Basin	Plugged and Abandoned
P-60	Anthony #2	Nova Scotia Oil & Gas Company	1945	44	265.2	45°10'40" N±20" 63°43'54" W±30"	Windsor Basin	Plugged and Abandoned
P-73	Anthony #3	Nova Scotia Oil & Gas Company	1951	44	788.8	45°10'42" N±20" 63°43'54" W±30"	Windsor Basin	Plugged and Abandoned
P-99	South Noel #1	Consultants A.G.R.E.N. Canada Ltd.	November 29, 1988	50	345.0	45°12'9.67" N 63°42'1.31" W	Windsor Basin	Plugged and Abandoned
P-109	Avondale #1	Northstar Energy	December 15, 1999	30.5	298.0	45°00'55.08"N 64°07'09.84"W	Windsor Basin	Plugged and Abandoned
P-110	Avondale #2	Northstar Energy	January 19, 2000	38.7	210.0	45°01'45.12"N 64°07'30.0"W	Windsor Basin	Plugged and Abandoned
P-100	Angus 94-1	Eagle Petroleum Inc./ Forgaz Inc.	September 4, 1994	29	455.0	45°11'4.8" N 63°15'32.3" W	Shubenacadie Basin	Plugged and Abandoned
P-127	William	Forent Energy Ltd.	September 14, 2007	29	390	45°02'56.272" N 63°28'7.845" W	Shubenacadie Basin	Plugged and Abandoned

Petroleum Wells without LAS in Windsor and Shubenacadie basins

Well ID: P-87

Well Name: Noel #1

Well Type: Vertical well

Spud Date: Jul. 1975

Status: Plugged and Abandoned

Operator: Soquip A.C.C.et al

Core/Cutting: 400.8-410m (core 1) & 0-1447.8m(cutting)

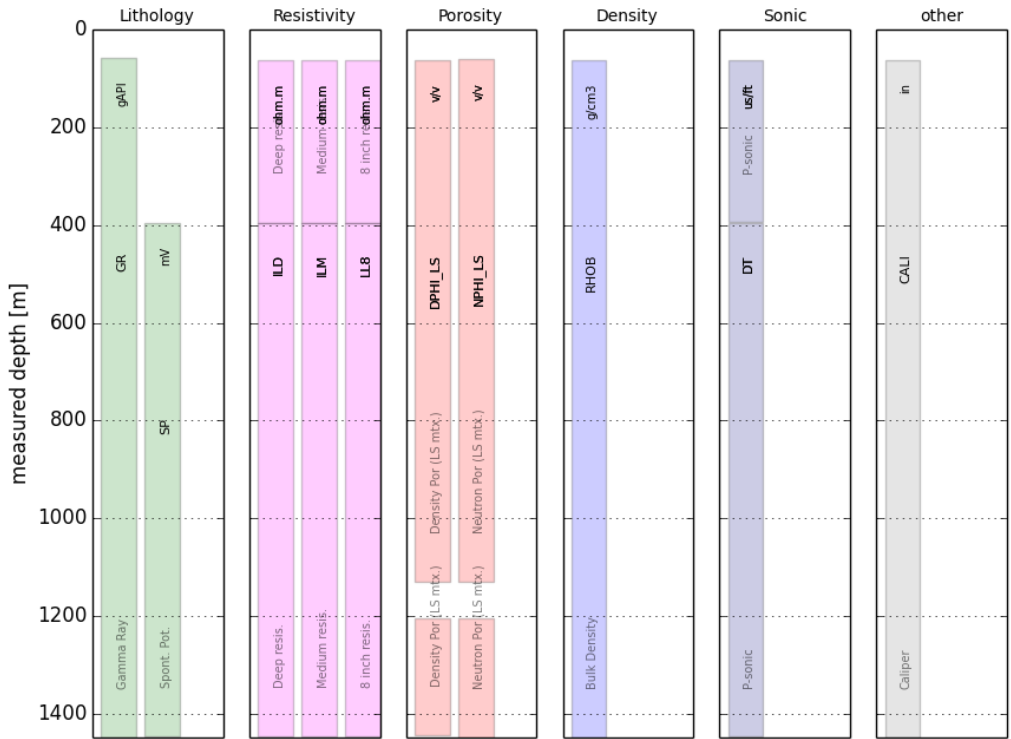
Surface Location: 444714 (Easting); 5006806 (Northing)

Coordinate Reference System: NAD 83/UTM Zone 20

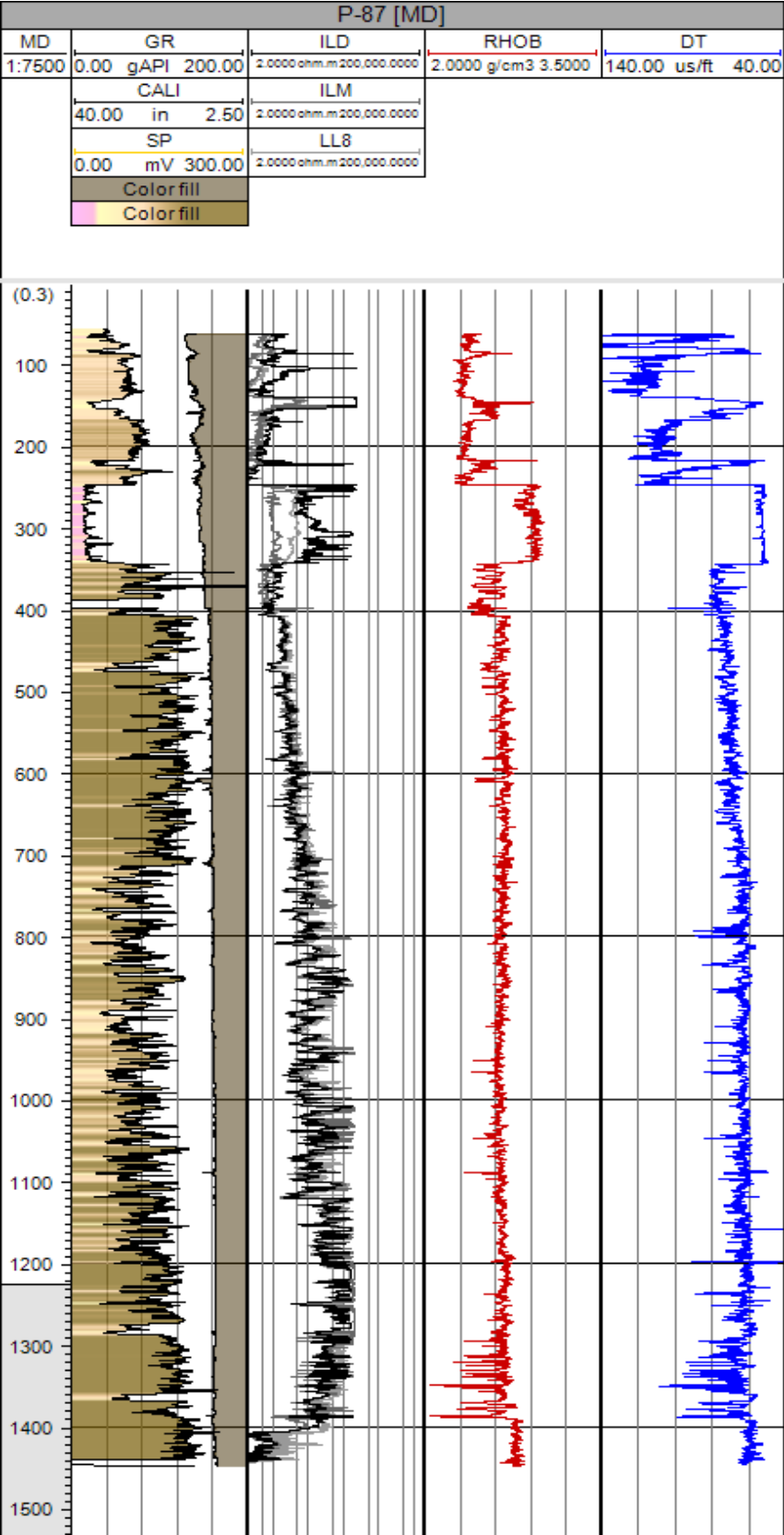
KB: 69.9m

TD: 1447.8m

Inventory of well logs



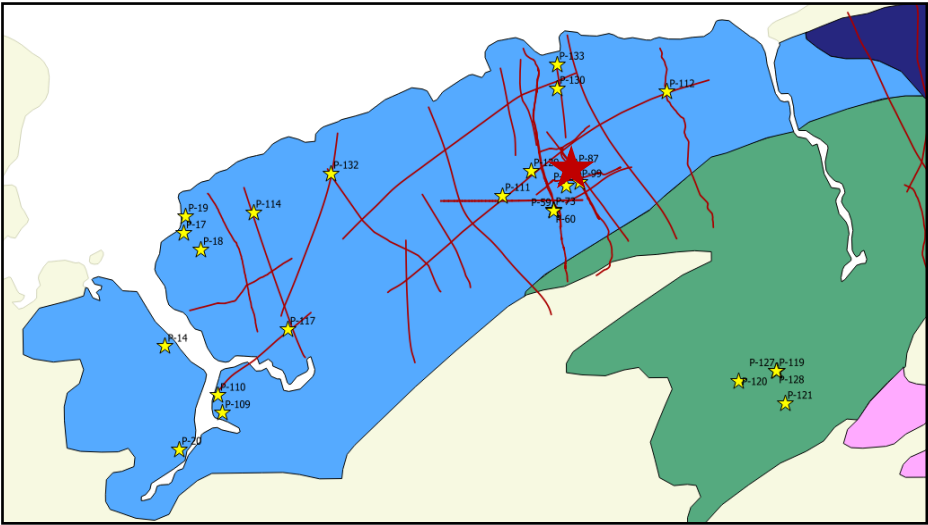
Composite logs



Nova Scotia Onshore Petroleum Atlas

Formation Top

Group/Formation	Top (m)
Windsor Group	12.2
Horton Bluff Formation	378.0
Upper Member	378.0
Middle Member	475.5
Lower Member	725.4
Meguma	1389.9



Well ID: P-108

Well Name: Alton 99-1

Well Type: Vertical well

Spud Date: Jul. 1999

Status: Plugged and Abandoned

Operator: Hunt Oil Company

Core/Cutting: 1275-1283m (core 1) & 85-1282m (cutting)

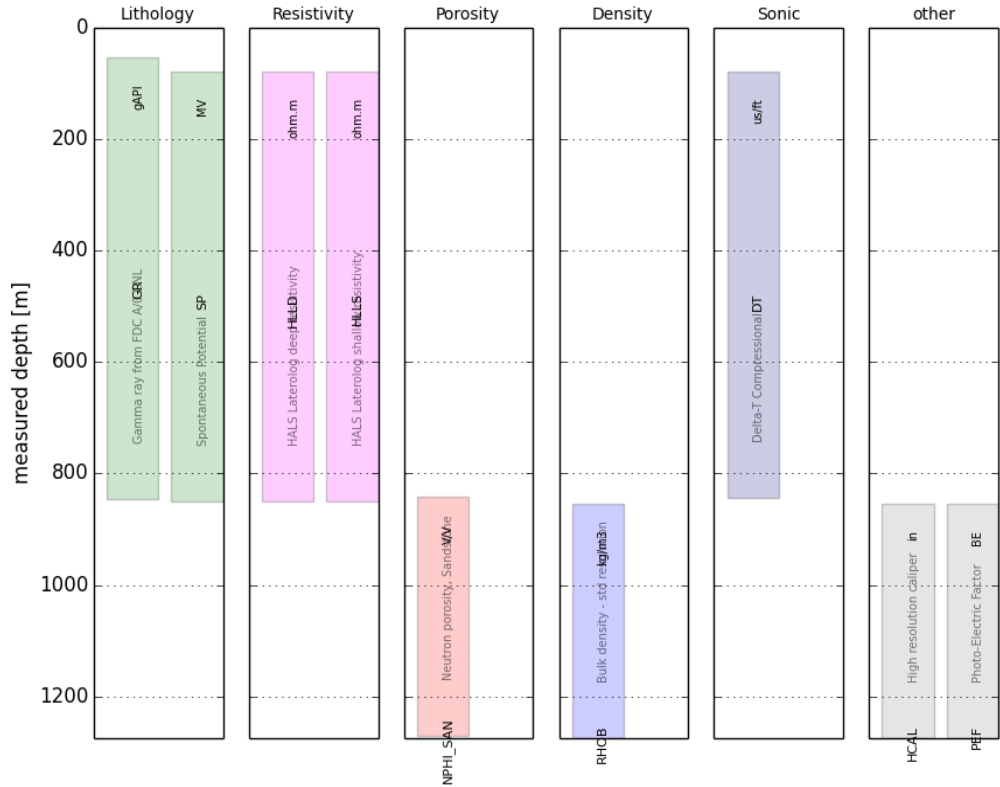
Surface Location: 478677 (Easting); 5004321 (Northing)

Coordinate Reference System: NAD 83/UTM Zone 20

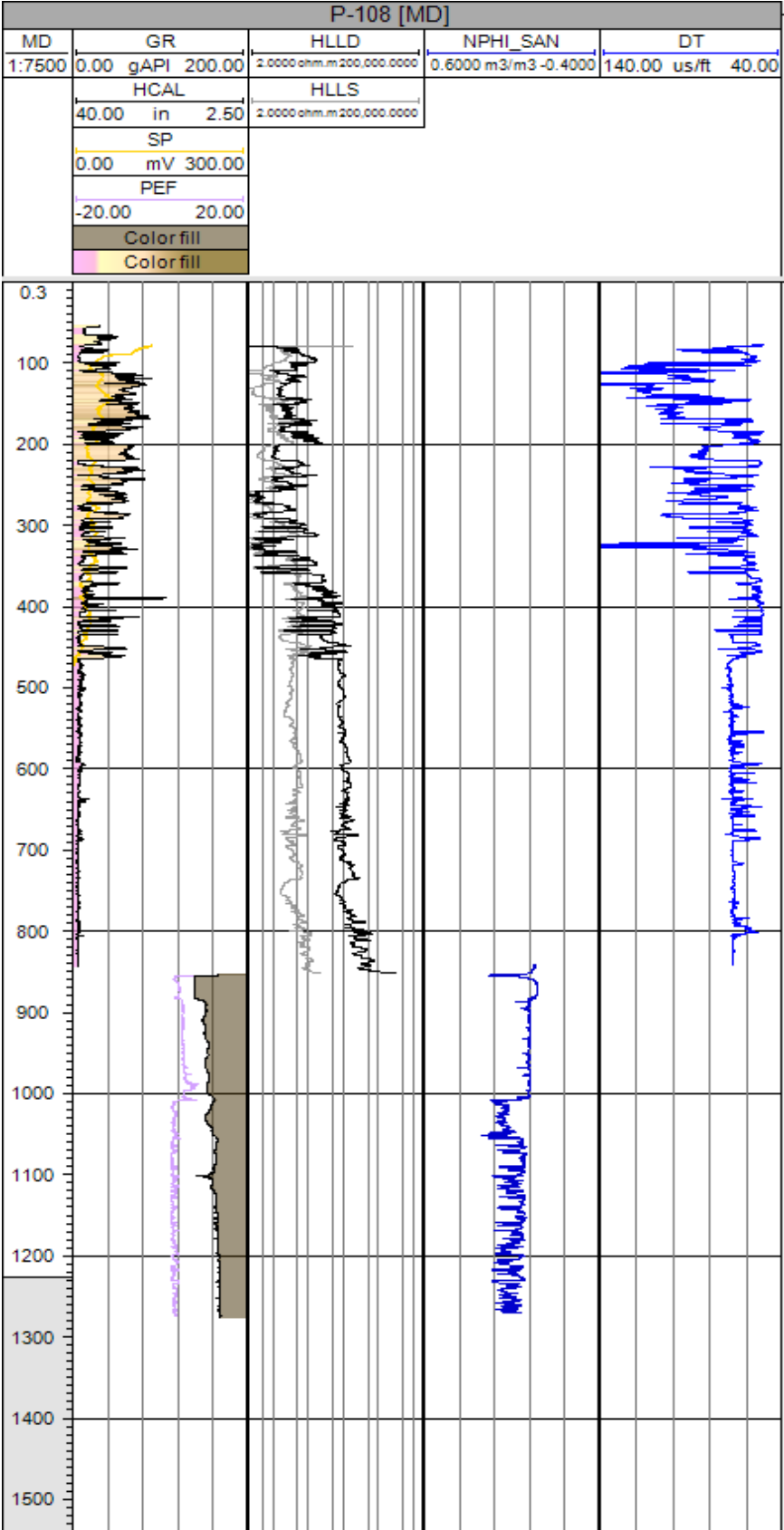
KB: 53.65m

TD: 1282m

Inventory of well logs



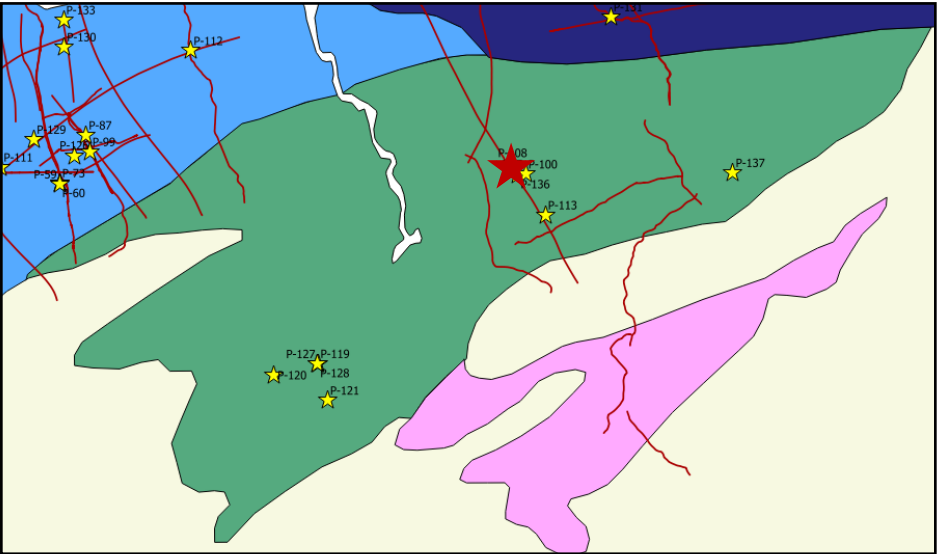
Composite logs



Nova Scotia Onshore Petroleum Atlas

Formation Top

Group/Formation	Top (m)
Green Oakes Formation	139
MacDonald Road Formation	315
Stewiacke Salt	465
Carrols Corner Formation	889
Macumber Formation	996
Horton Cheverie Formation	1008.3
Meguma	1055



Well ID: P-111

Well Name: Coolbrook #1

Well Type: Vertical well

Spud Date: Feb. 2001

Status: Plugged and Abandoned

Operator: Northstar Energy

Core/Cutting: 0-1342m (core 1)

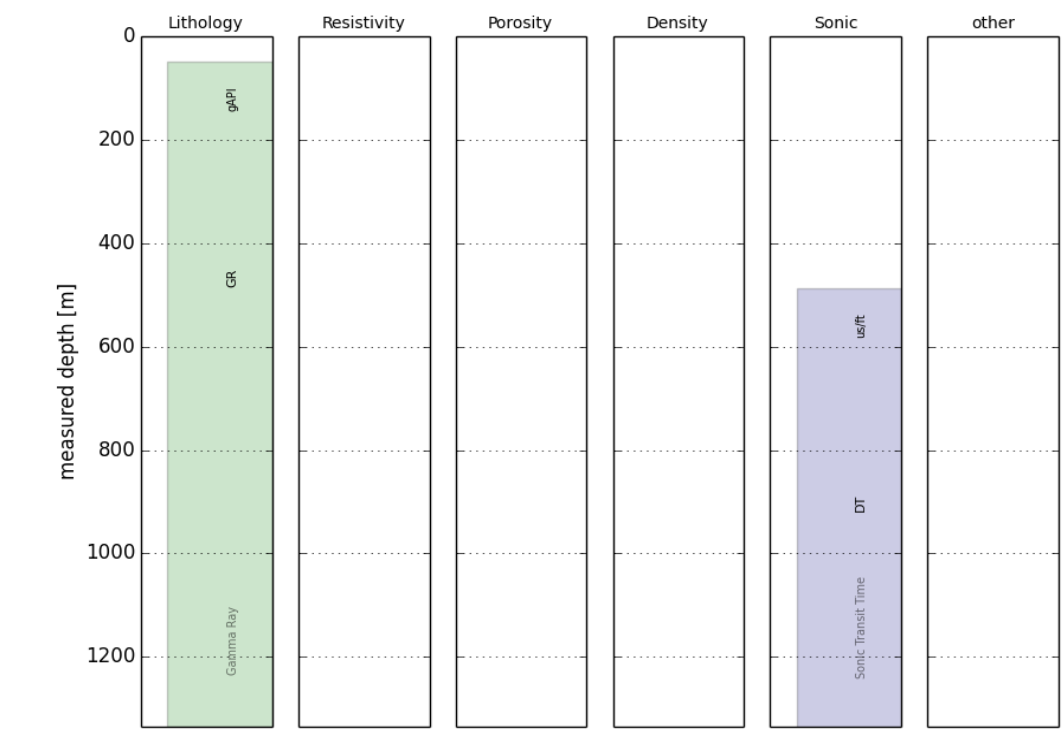
Surface Location: 437911 (Easting); 5004325 (Northing)

Coordinate Reference System: NAD 83/UTM Zone 20

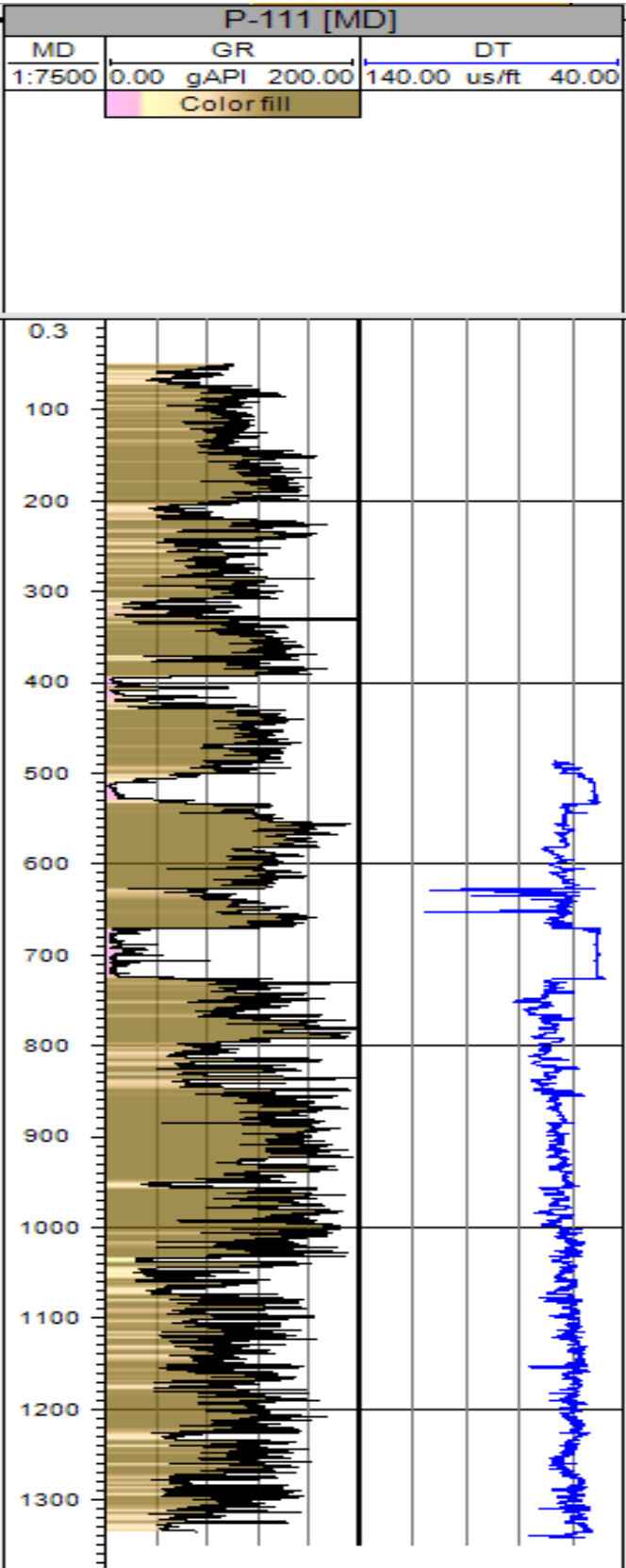
KB: 63.3m

TD: 1349m

Inventory of well logs



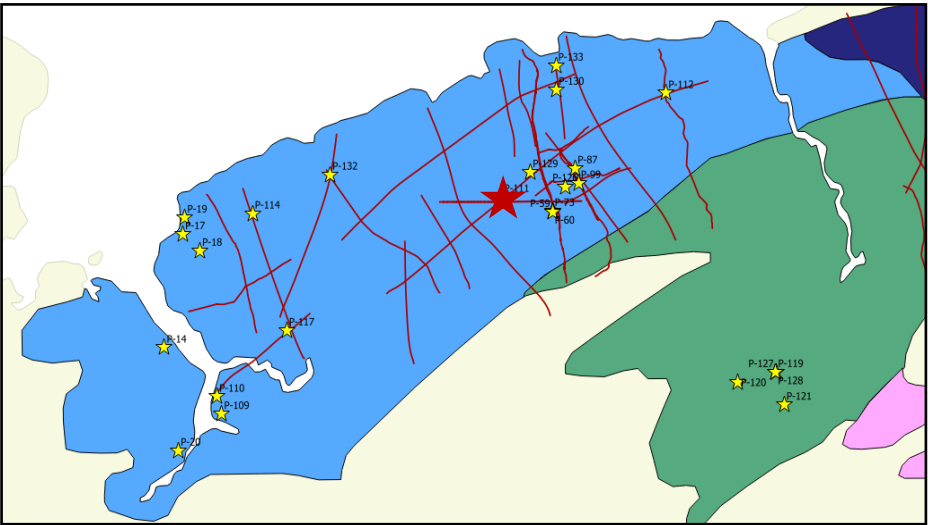
Composite logs



Nova Scotia Onshore Petroleum Atlas

Formation Top

Group/Formation	Top (m)
Windsor Group	293.8
Horton Group	726.8
Glass Sand Member	1032.2



Composite logs

Well ID: P-112

Well Name: Creelman Hill #1

Well Type: Vertical well

Spud Date: Apr. 2001

Status: Plugged and Abandoned

Operator: Northstar Energy

Core/Cutting: 0-1407m (core 1)

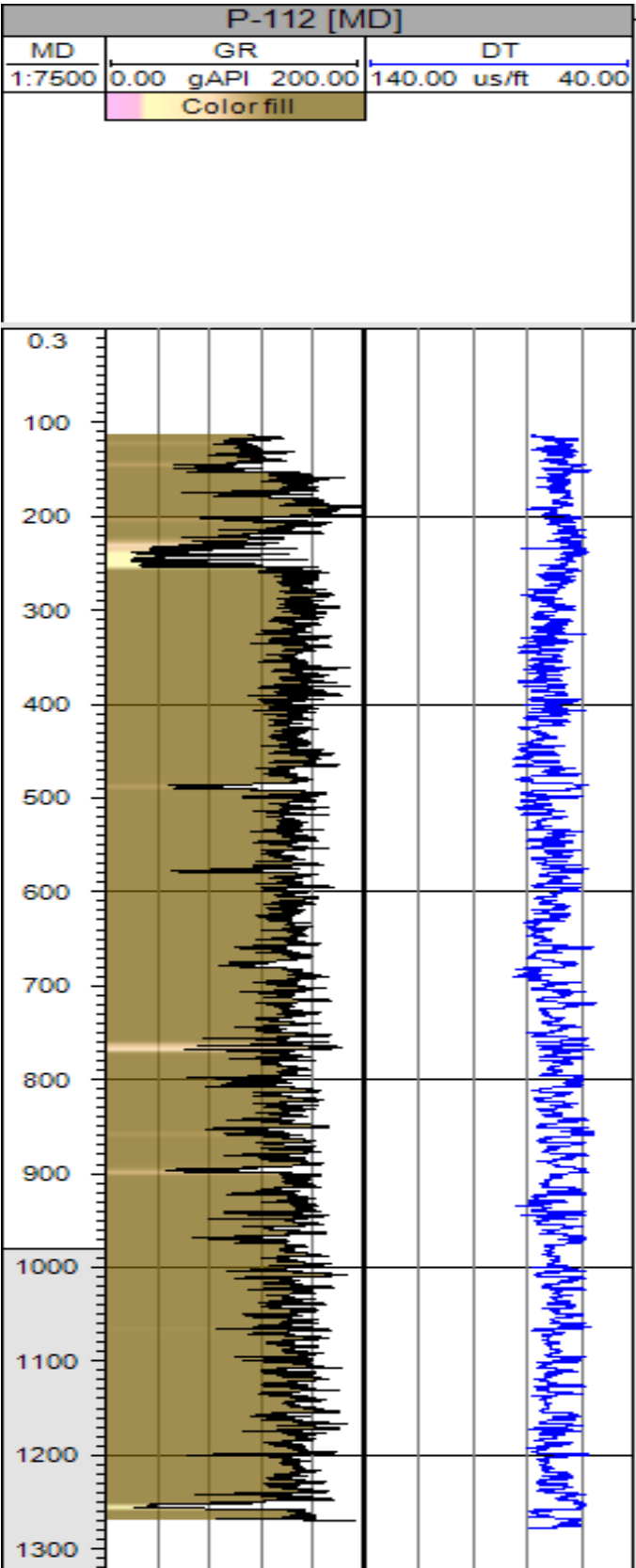
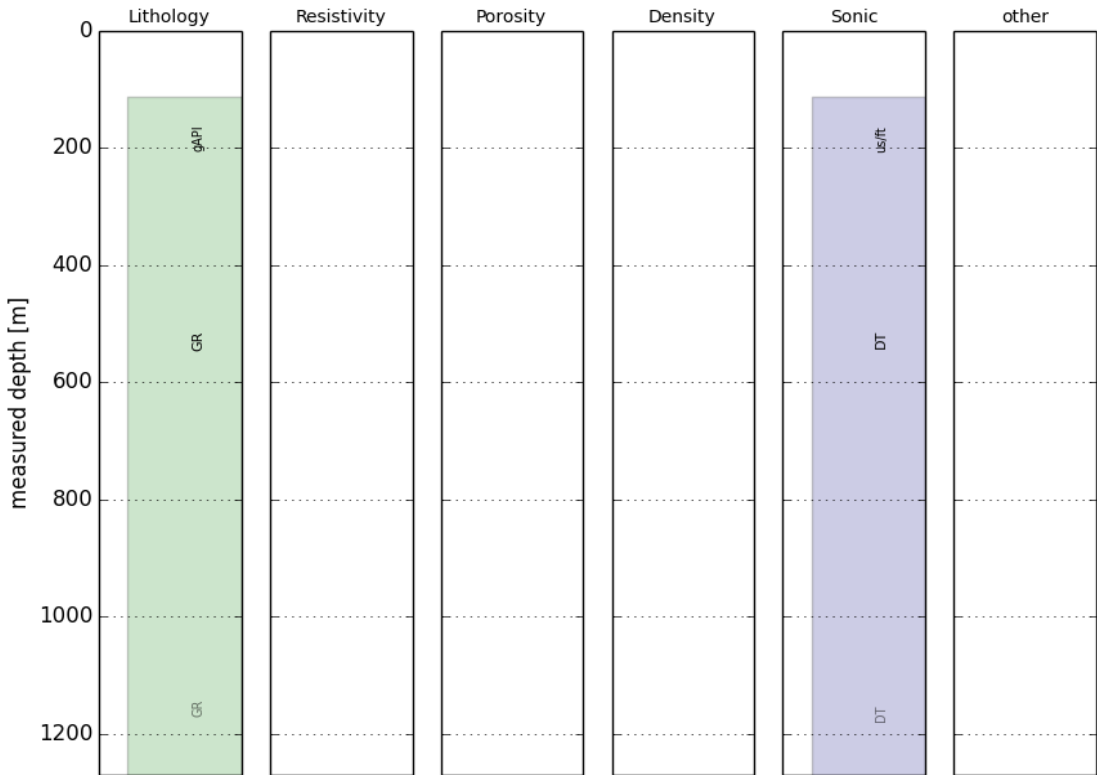
Surface Location: 440571 (Easting); 5006503 (Northing)

Coordinate Reference System: NAD 83/UTM Zone 20

KB: 150.73m

TD: 1407m

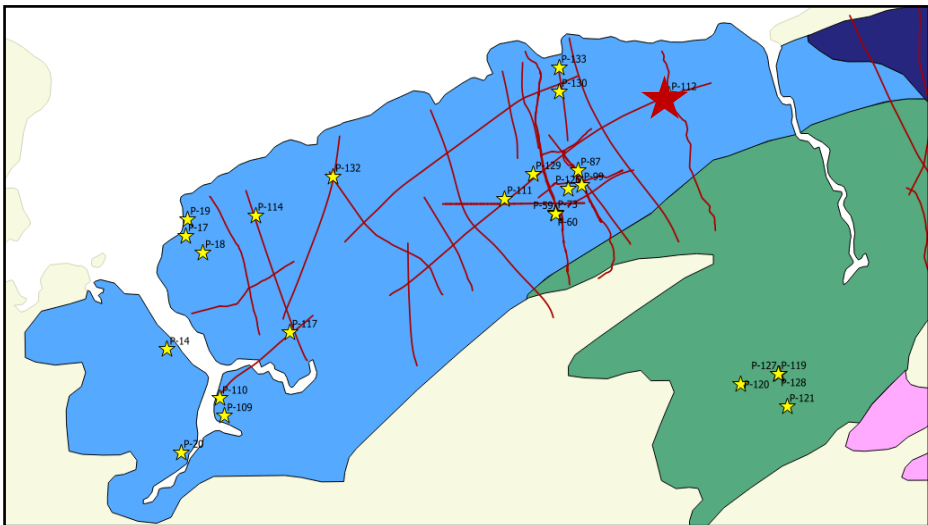
Inventory of well logs



Nova Scotia Onshore Petroleum Atlas

Formation Top

Group/Formation	Top (m)
Cheverie Formation	0
Horton Bluff Formation	241.5
Glass Sand Member (top)	241.5
Glass Sand Member (base)	253.8



Well ID: P-113

Well Name: Cloverdale #1

Well Type: Vertical well

Spud Date: Oct.2001

Status: Plugged and Abandoned

Operator: EOG Resources

Core/Cutting: 917-923m (core1,2,3,4) & 0-923m (cutting)

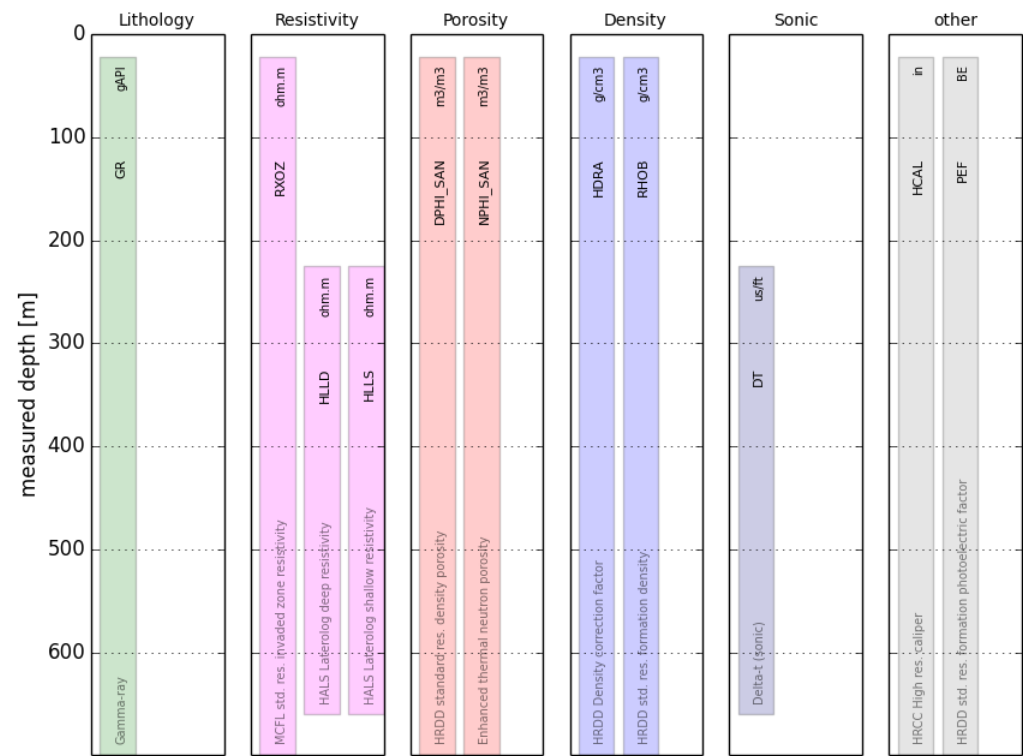
Surface Location: 481271 (Easting); 5000252 (Northing)

Coordinate Reference System: NAD 83/UTM Zone 20

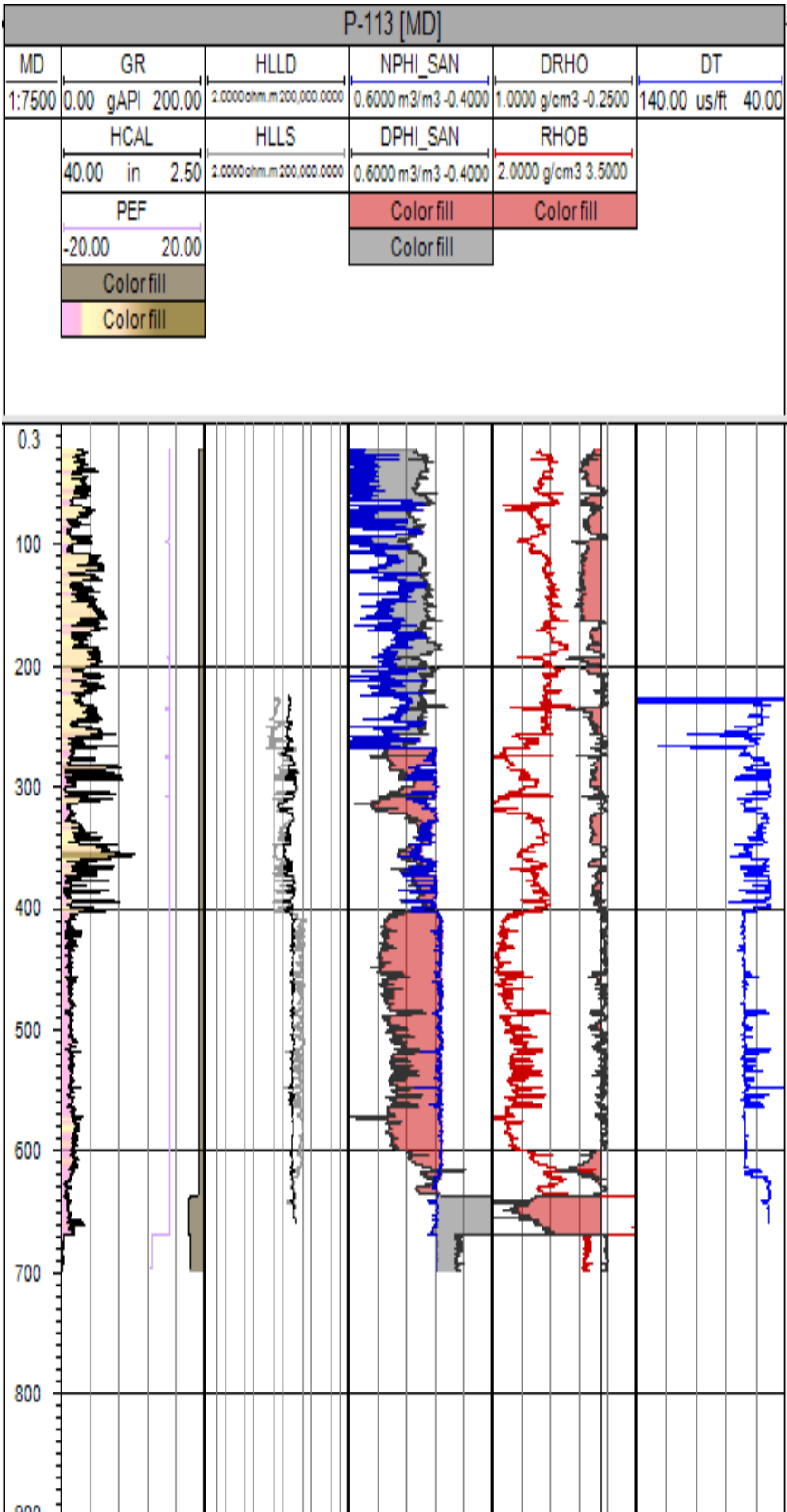
KB: 82.6m

TD: 923m

Inventory of well logs



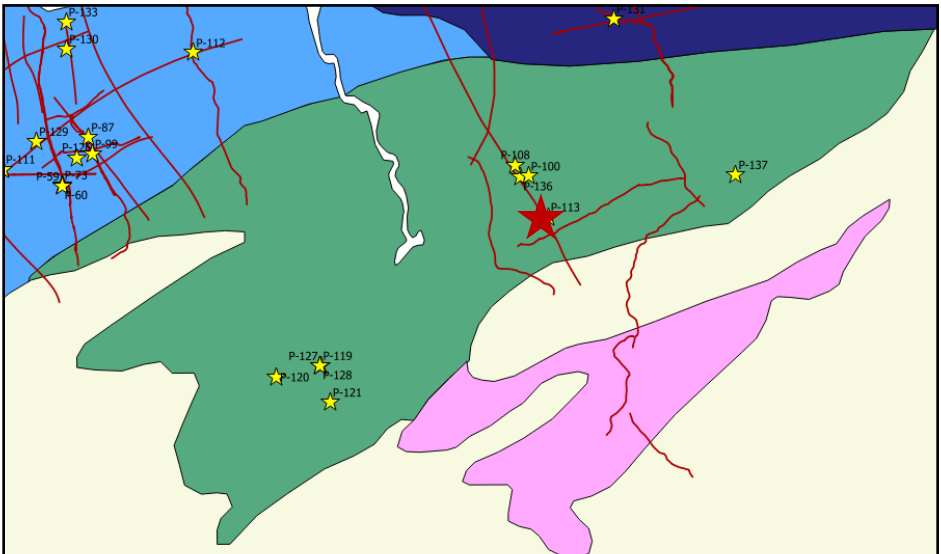
Composite logs



Nova Scotia Onshore Petroleum Atlas

Formation Top

Group/Formation	Top (m)
Green Oaks Formation	55
MacDonald Road Formation	240
Stewiacke Formation	410
Carrols Corner Formation	620
Macumber Formation	883
Horton Group	895
Meguma	909



Well ID: P-114

Well Name: Devon Cheverie #1

Well Type: Vertical well

Spud Date: Nov. 2001

Status: Plugged and Abandoned

Operator: Devon Canada

Core/Cutting: 25 sidewall cores & 0-1394m (cutting)

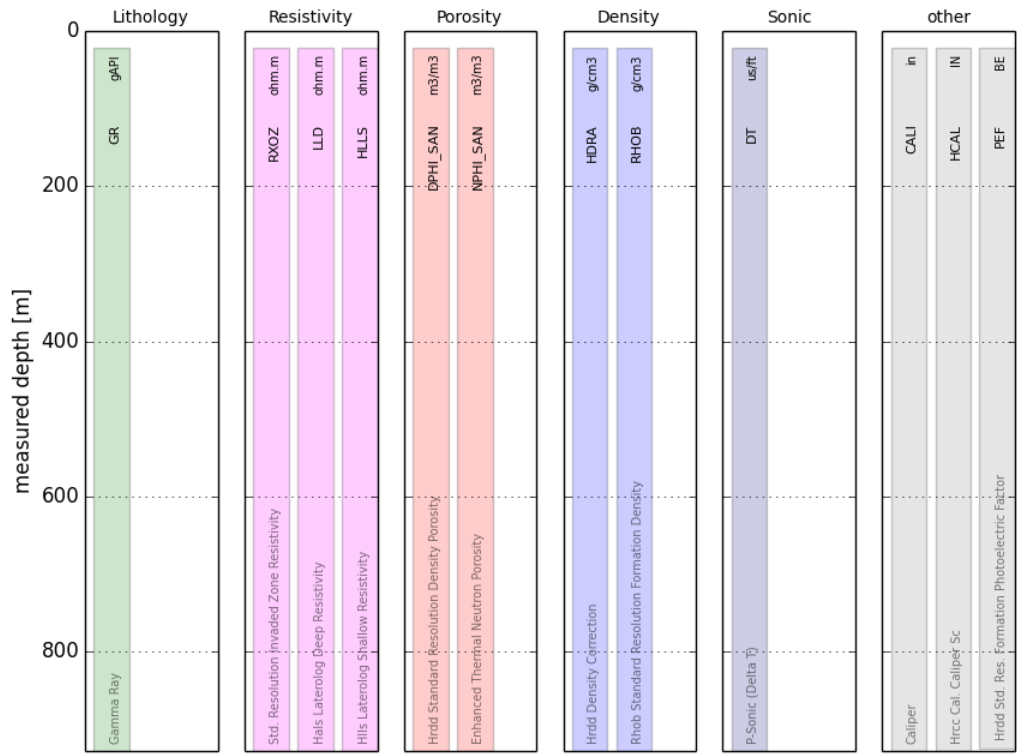
Surface Location: 414929 (Easting); 5003105 (Northing)

Coordinate Reference System: NAD 83/UTM Zone 20

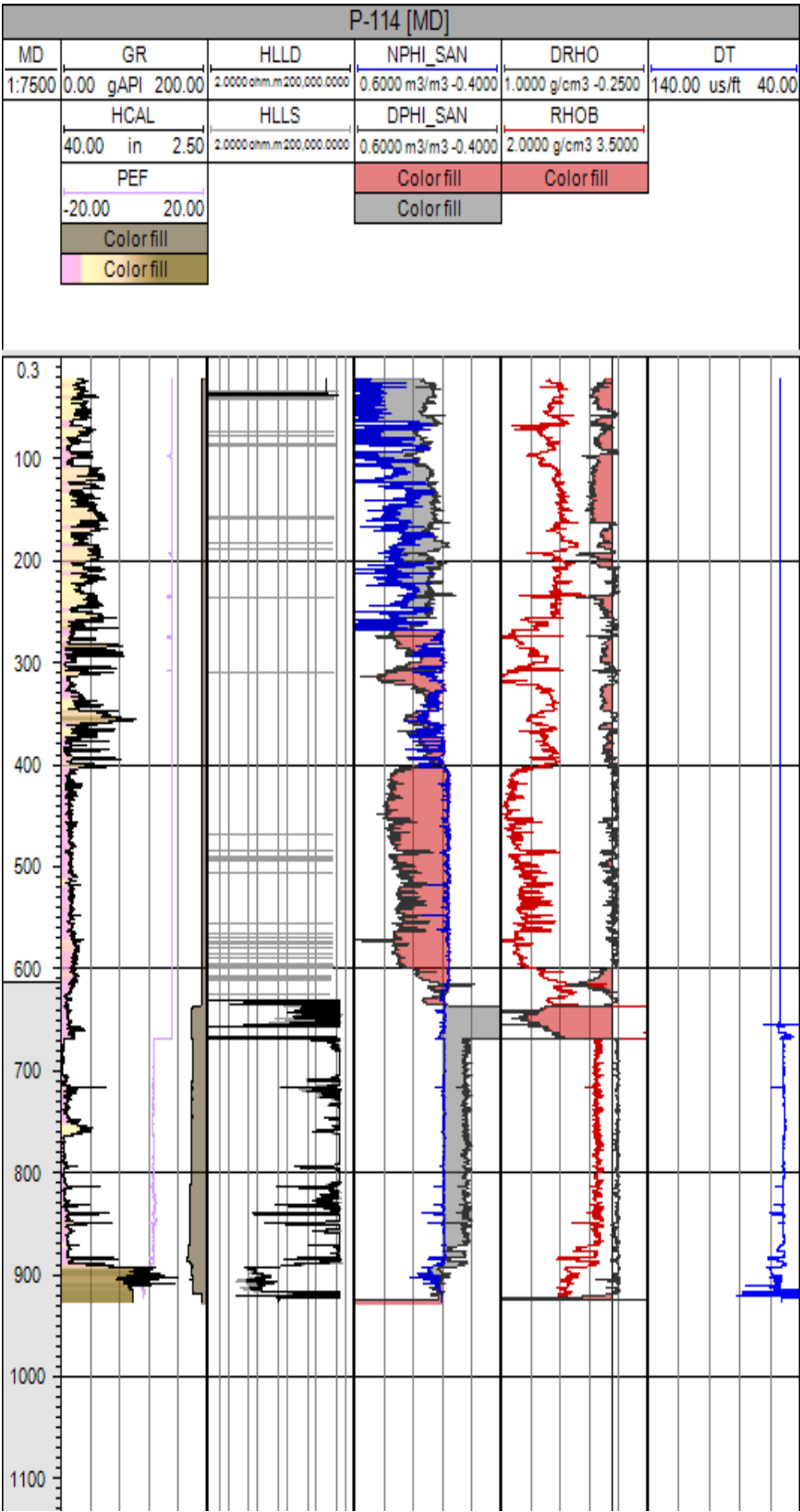
KB: 93.8m

TD: 1410m

Inventory of well logs



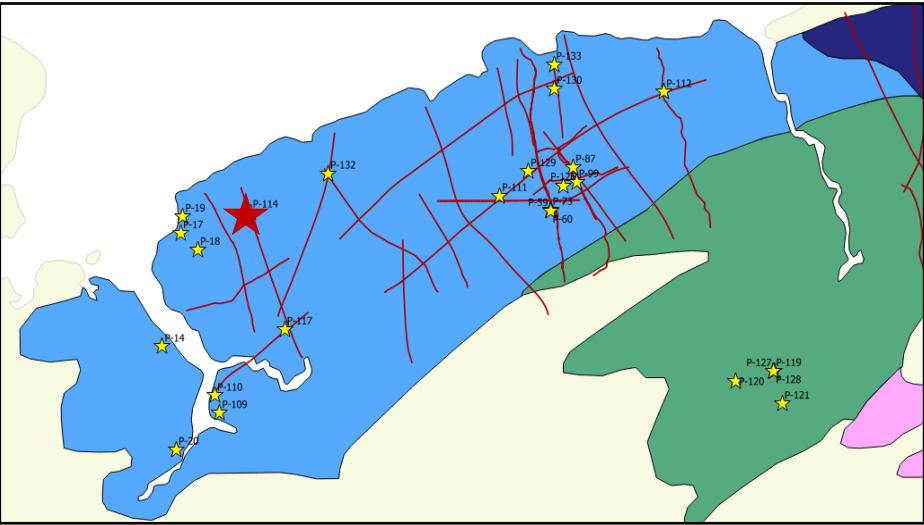
Composite logs



Nova Scotia Onshore Petroleum Atlas

Formation Top

Group/Formation	Top (m)
Scotch Village Formation	0
Windsor Group	404
MacDonald Road Formation	NP
Stewiacke Formation (Salt)	832.5
Horton Group	890.5
Glass Sand Member	1116.5



Composite logs

Well ID: P-117

Well Name: Cogmagun #1

Well Type: Vertical well

Spud Date: Sep. 2003

Status: Plugged and Abandoned

Operator: Oiltec Resources Ltd

Core/Cutting: 0-495.74m (cutting)

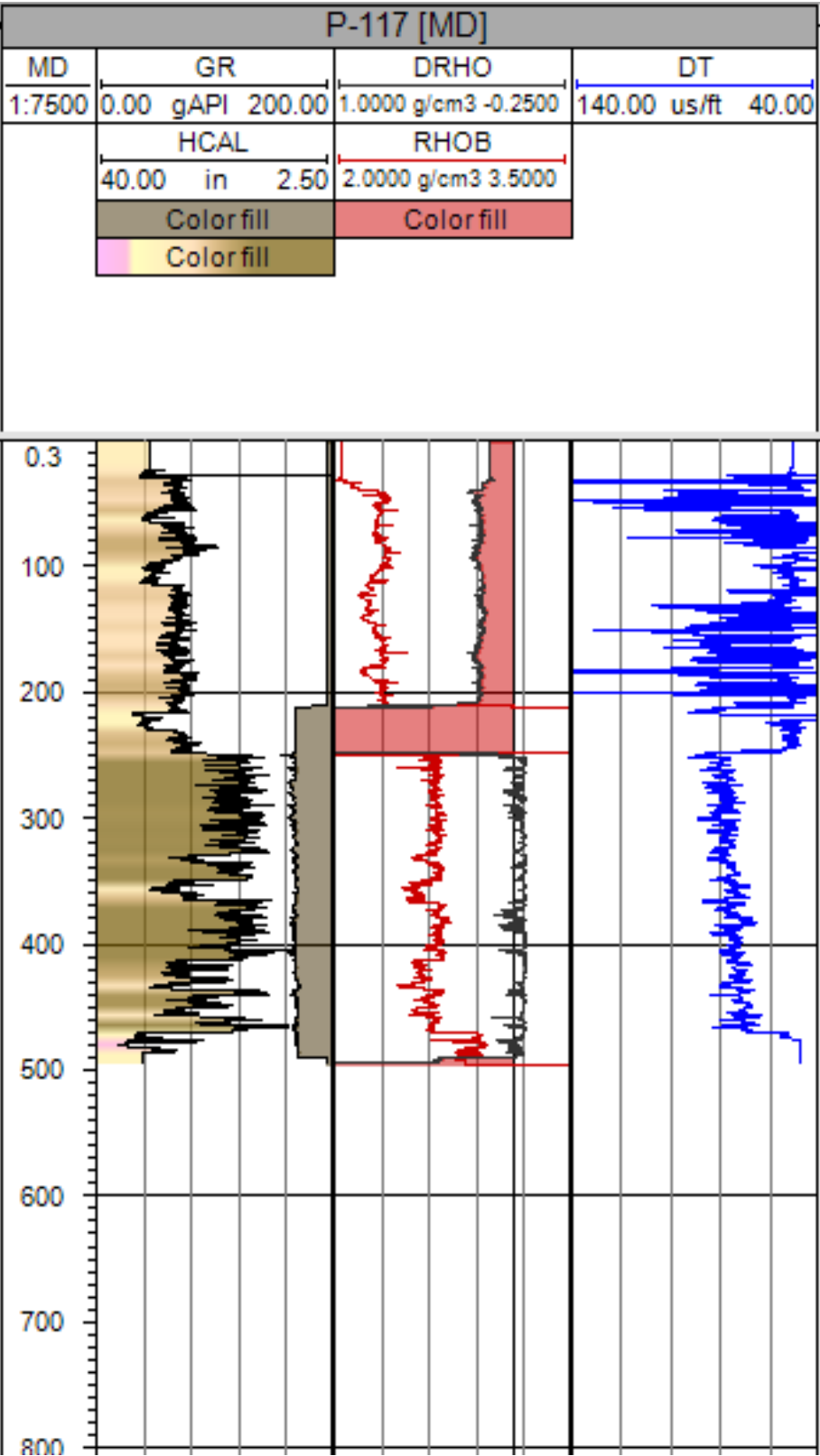
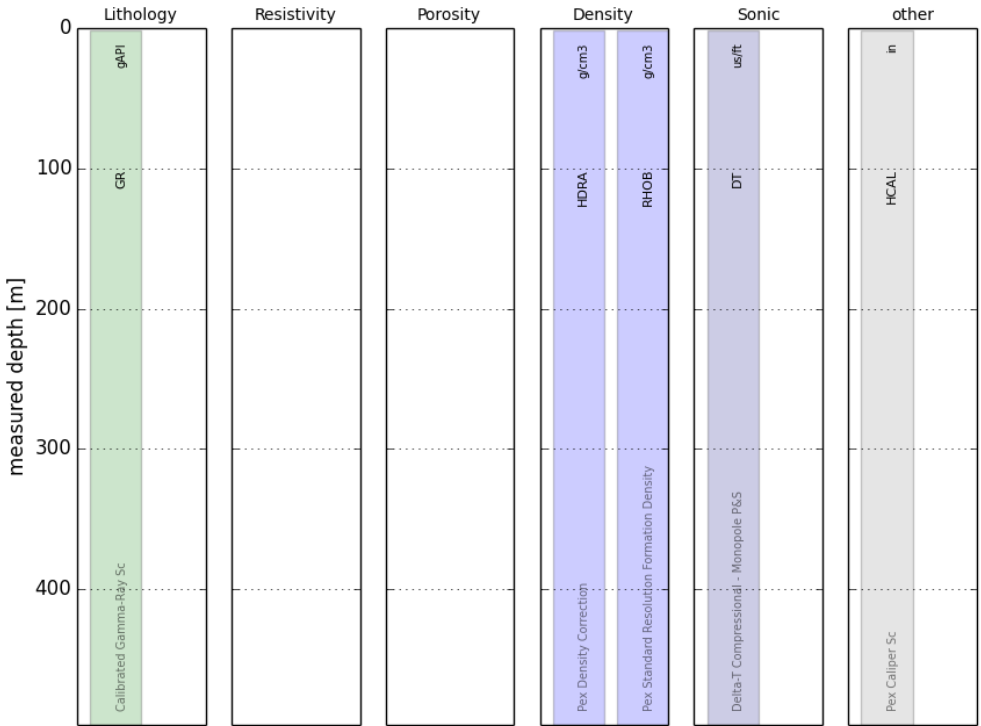
Surface Location: 417948 (Easting); 4992648 (Northing)

Coordinate Reference System: NAD 83/UTM Zone 20

KB: 53.67m

TD: 495.74m

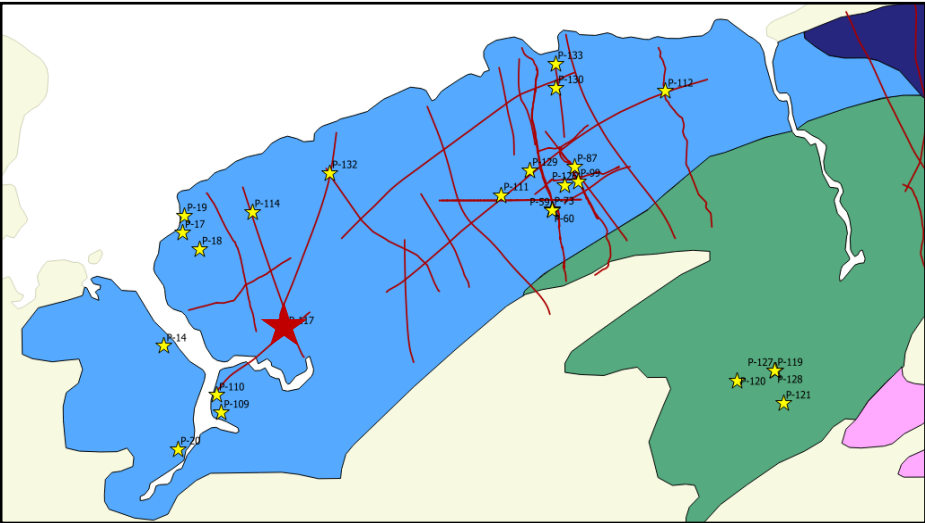
Inventory of well logs



Nova Scotia Onshore Petroleum Atlas

Formation Top

Group/Formation	Top (m)
Scotch Village Formation	27
Windsor Group	463
Stewiacke Formation (salt)	491.5



Well ID: P-119

Well Name: Barney Brook #1

Well Type: Vertical well

Spud Date: Sep. 2005

Status: Plugged and Abandoned

Operator: EOG Resources Inc

Core/Cutting: 662-666.7m (core 1) & 0-749m (cutting)

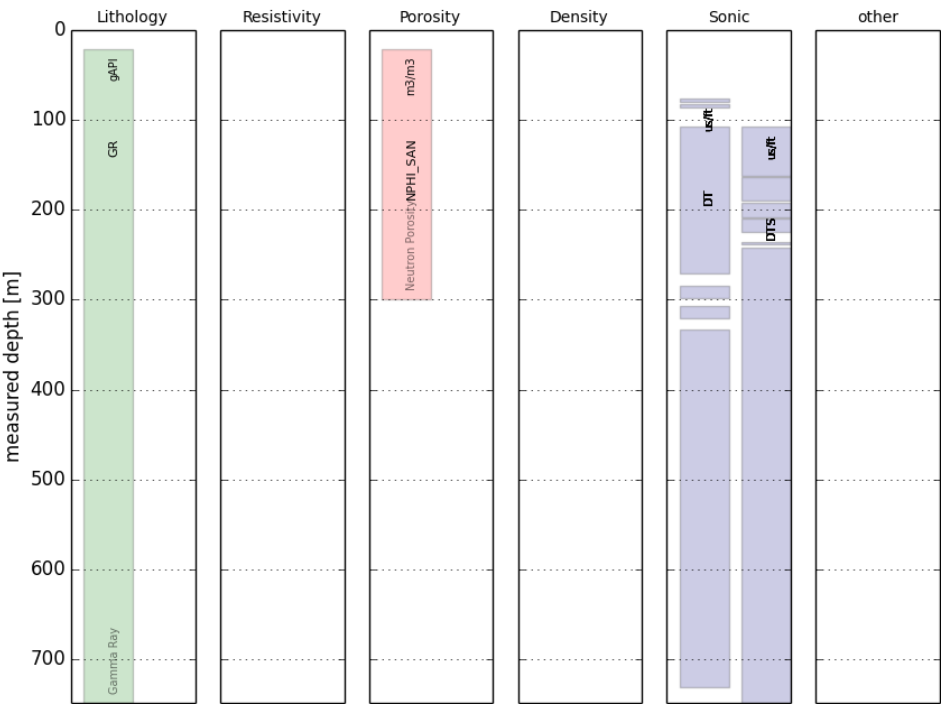
Surface Location: 463060 (Easting); 4988515 (Northing)

Coordinate Reference System: NAD 83/UTM Zone 20

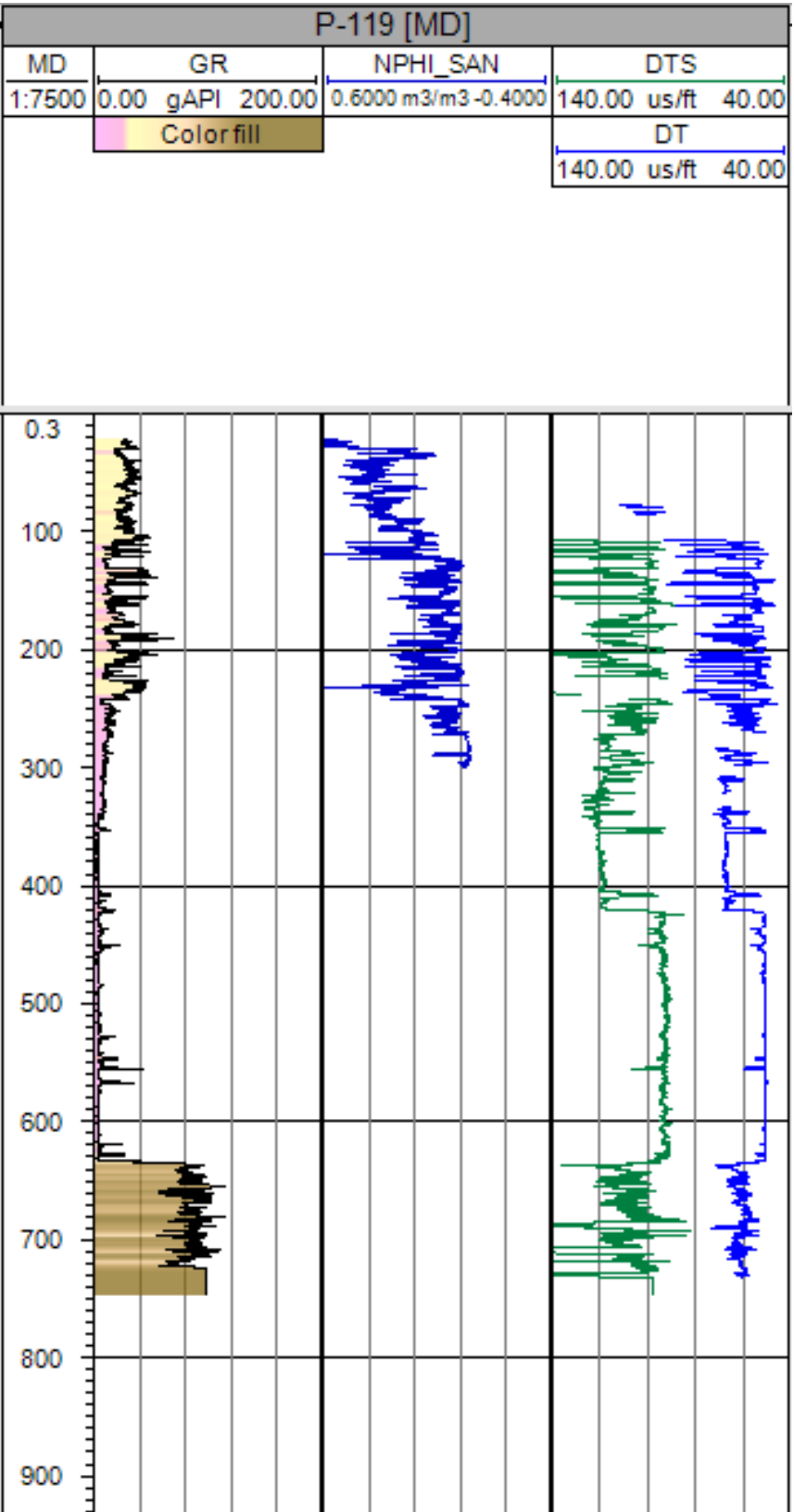
KB: 47.02m

TD: 749m

Inventory of well logs



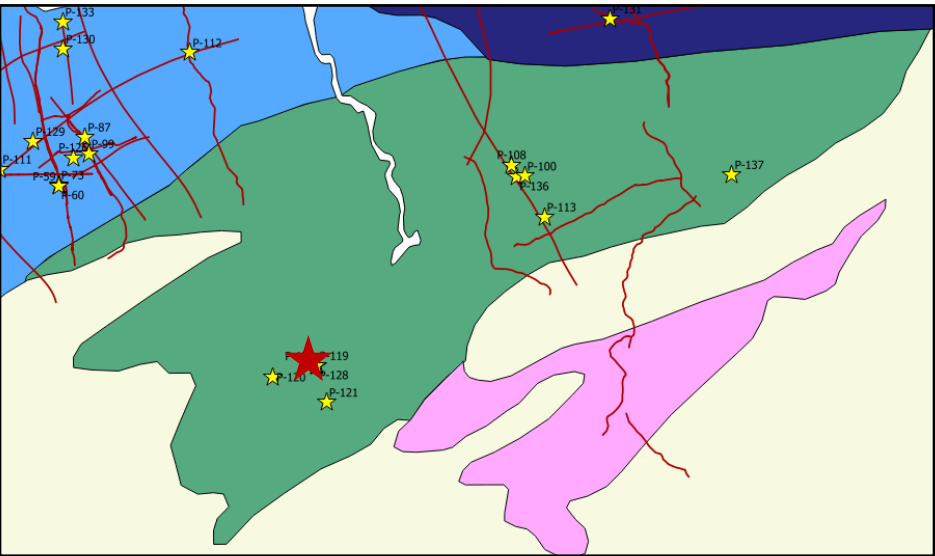
Composite logs



Nova Scotia Onshore Petroleum Atlas

Formation Top

Group/Formation	Top (m)
MacDonald Road Formation	132
Stewiacke Formation (salt)	226
Carrolls Corner Formation	422
Gays River Formation	626
Horton Group	638.5
Meguma	727.5



Well ID: P-120

Well Name: Hardwoodland #1

Well Type: Vertical well

Spud Date: Nov. 2005

Status: Plugged and Abandoned

Operator: EOG Resources Inc

Core/Cutting: 0-835m (cutting)

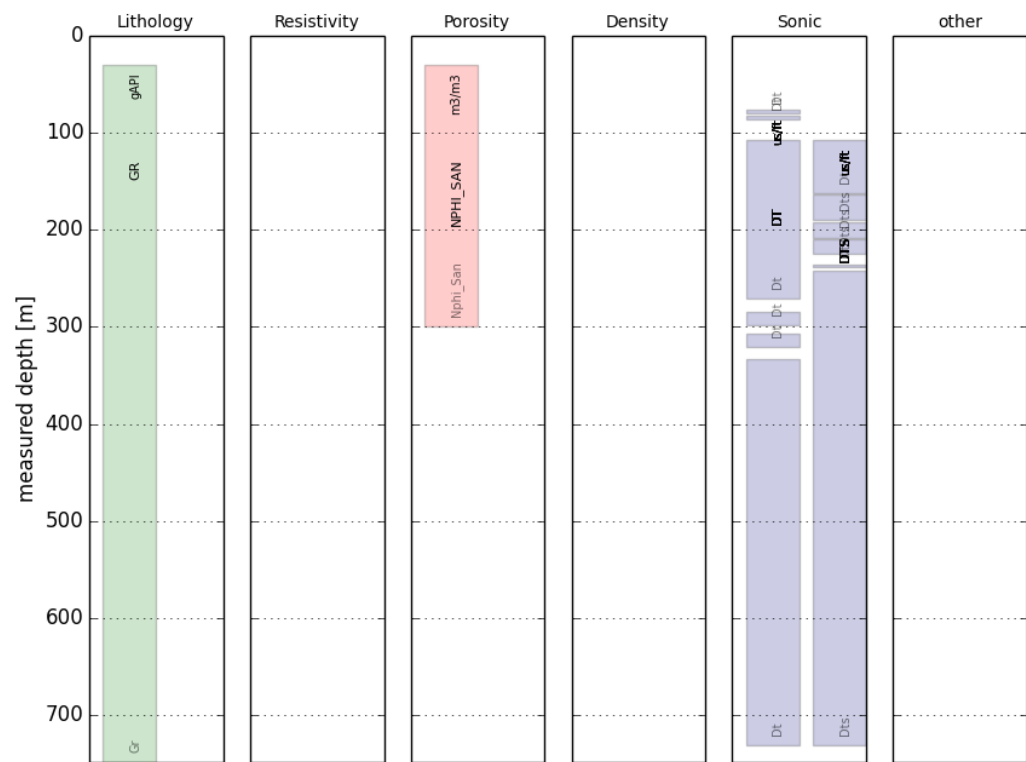
Surface Location: 459530 (Easting); 4987591 (Northing)

Coordinate Reference System: NAD 83/UTM Zone 20

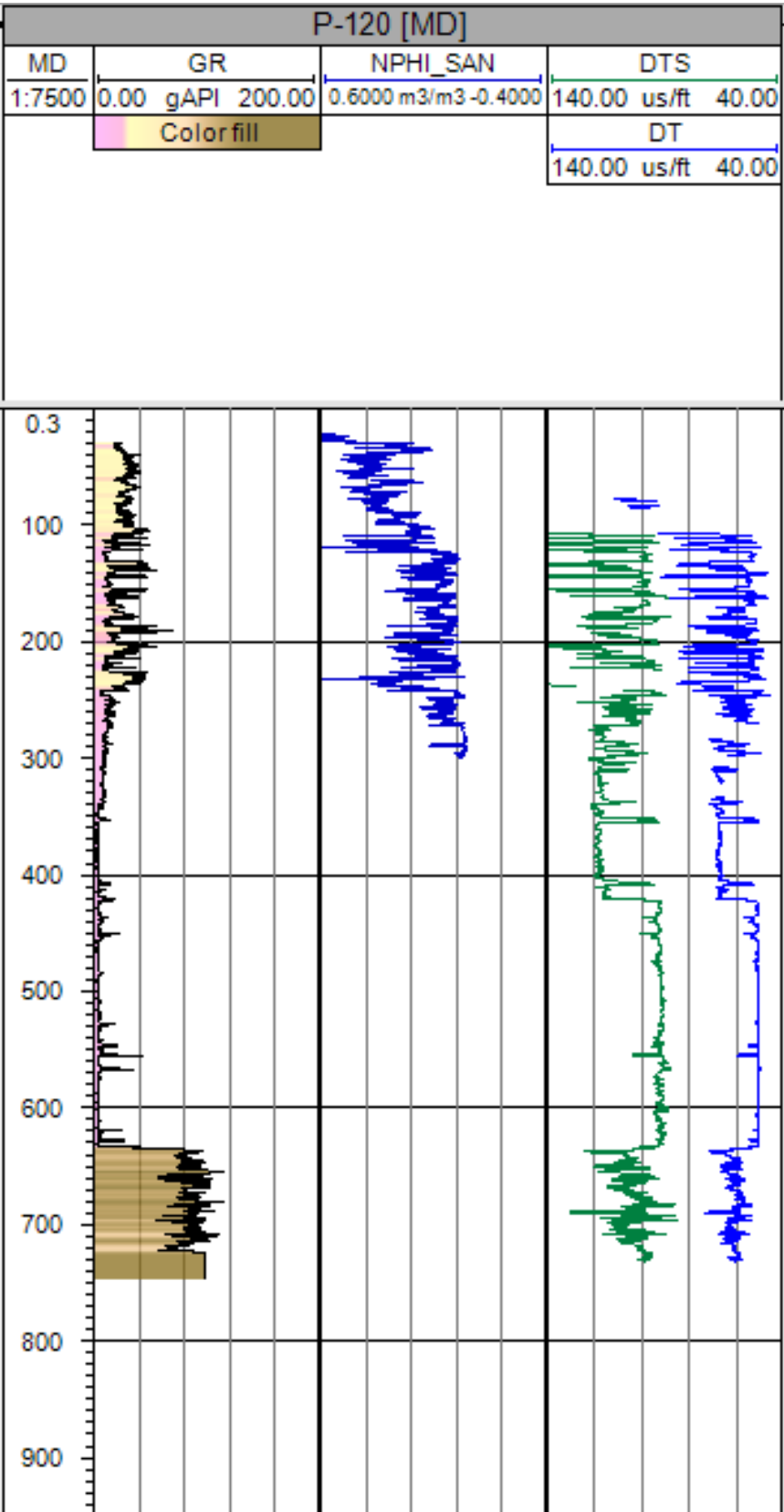
KB: 38m

TD: 835m

Inventory of well logs



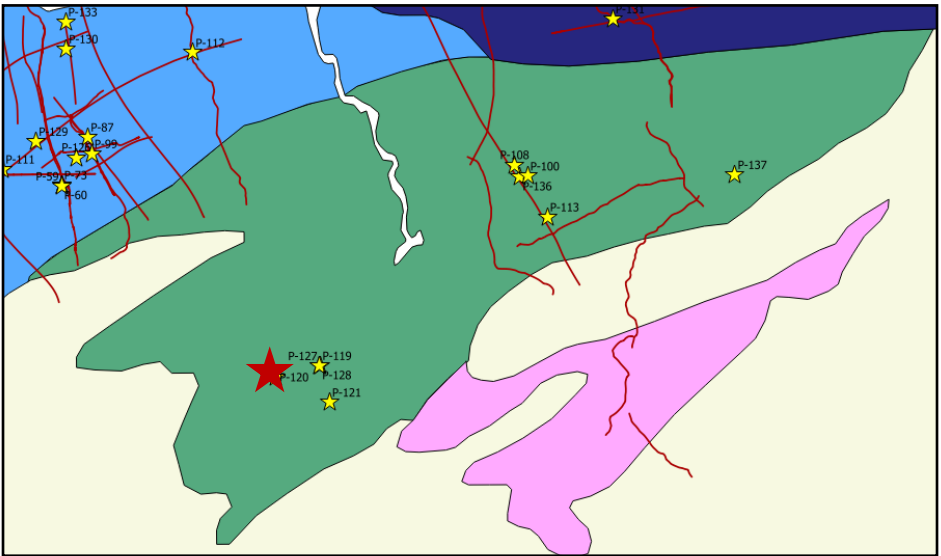
Composite logs



Nova Scotia Onshore Petroleum Atlas

Formation Top

Group/Formation	Top (m)
Canso	25
Green Oaks Formation	68
MacDonald Road Formation	142.5
Stewiacke Formation (salt)	294
Carrolls Corner Formation	581
Gays River Formation	NP
Horton Group	757.5
Meguma	799



Well ID: P-121

Well Name: Mildford Station #1

Well Type: Vertical well

Spud Date: Dec. 2005

Status: Plugged and Abandoned

Operator: EOG Resources Inc

Core/Cutting: 810-819m (core 1) & 0-870m (cutting)

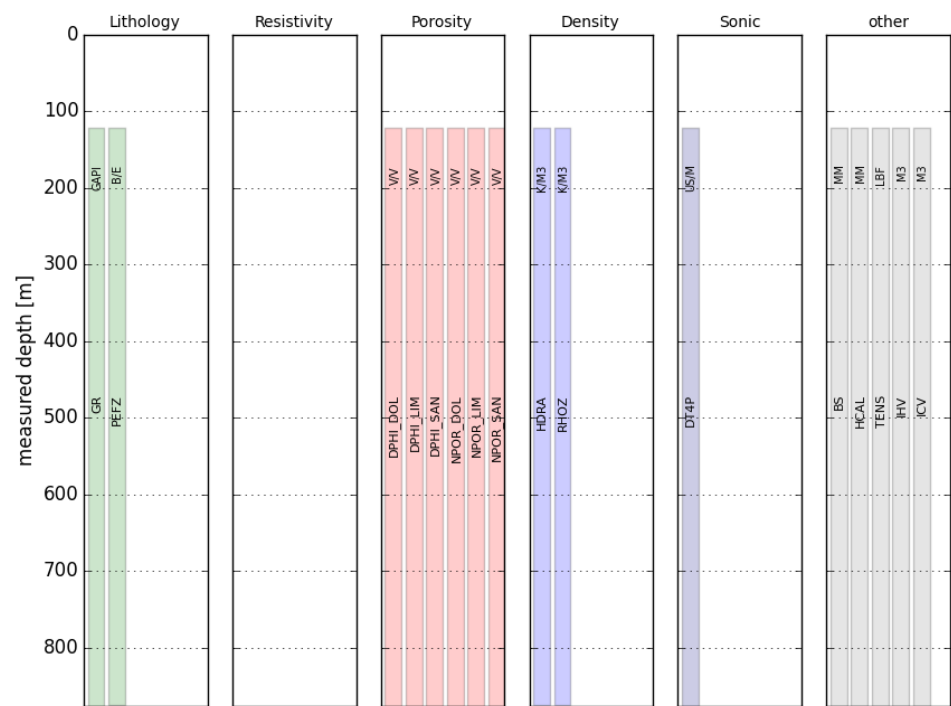
Surface Location: 463819 (Easting); 4985585 (Northing)

Coordinate Reference System: NAD 83/UTM Zone 20

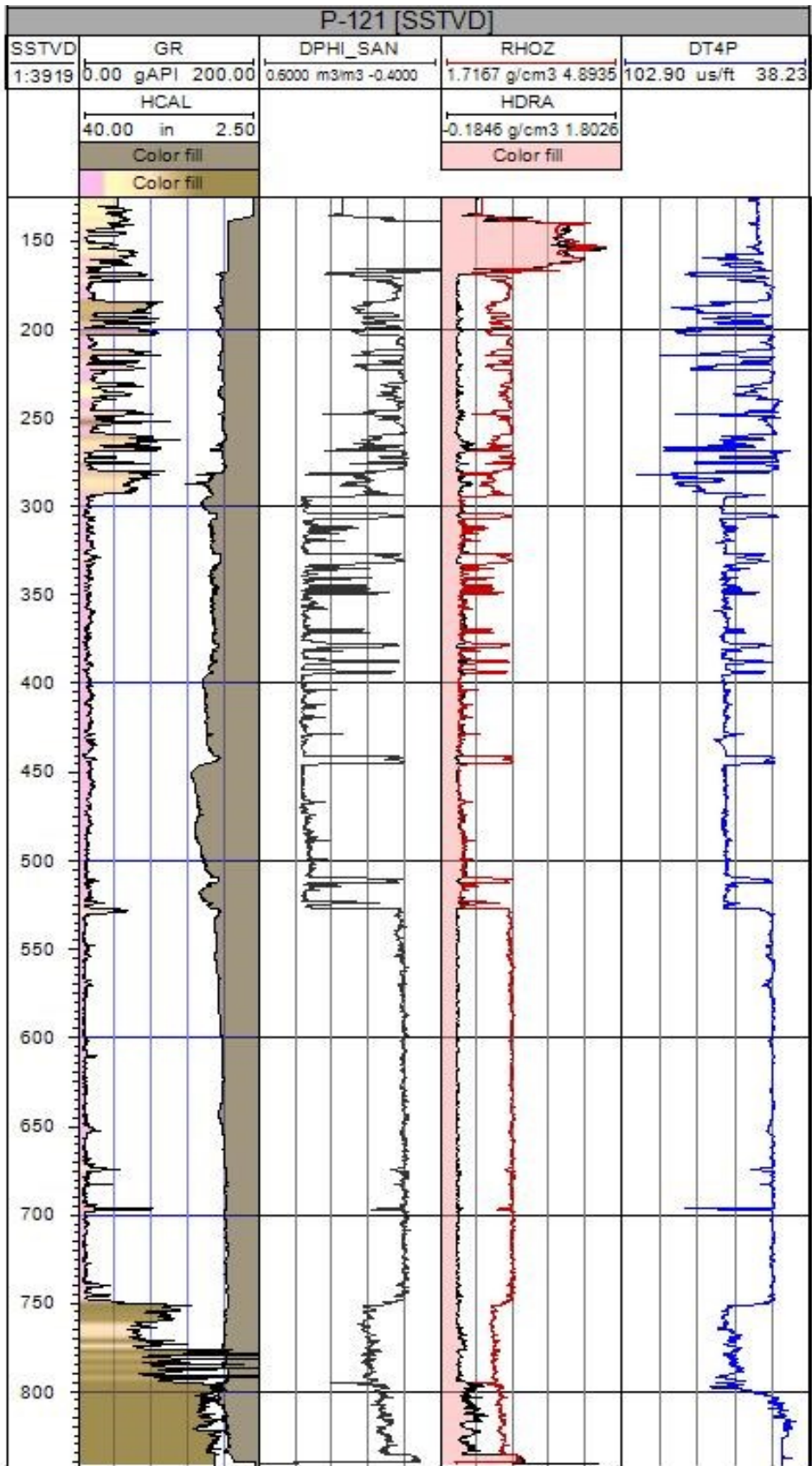
KB: 42m

TD: 870.5m

Inventory of well logs



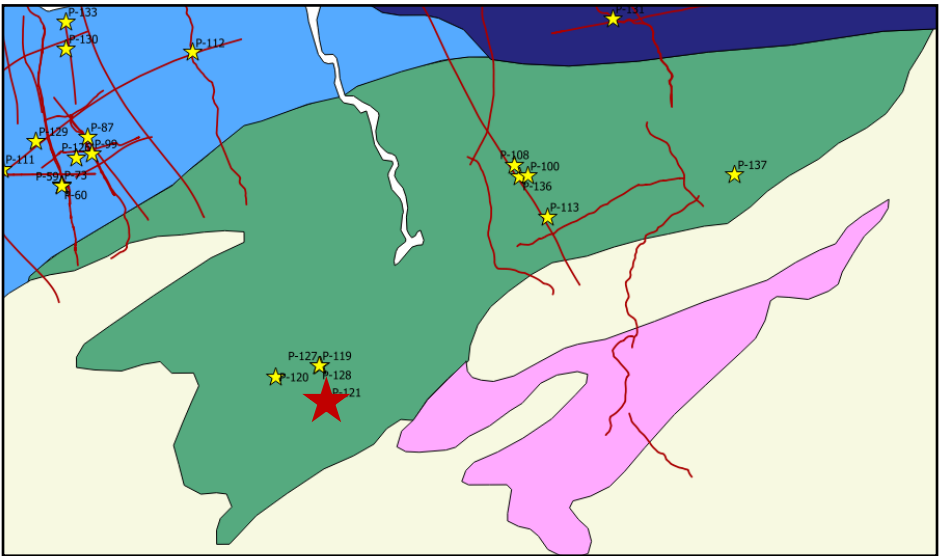
Composite logs



Nova Scotia Onshore Petroleum Atlas

Formation Top

Group/Formation	Top (m)
Canso	NP
Green Oaks Formation	NP
MacDonald Road Formation	177.1
Stewiacke Formation (salt)	327.5
Carrolls Corner Formation	561
Gays River Formation	782
Horton Group	784.4
Meguma	832.3



Well ID: P-126

Well Name: Kennetcook #1

Well Type: Vertical well

Spud Date: Aug. 2007

Status: Plugged and Abandoned

Operator: Elmworth Energy

Core/Cutting: core 1-61 & 0-1358m (cutting)

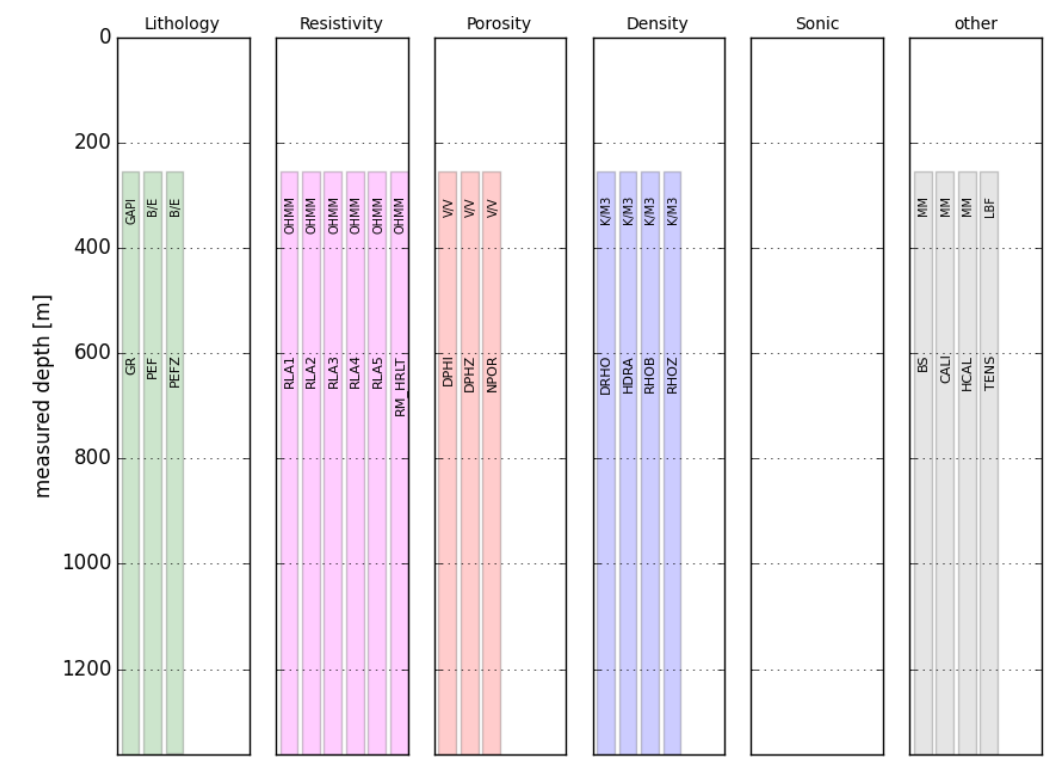
Surface Location: 443757 (Easting); 5005132 (Northing)

Coordinate Reference System: NAD 83/UTM Zone 20

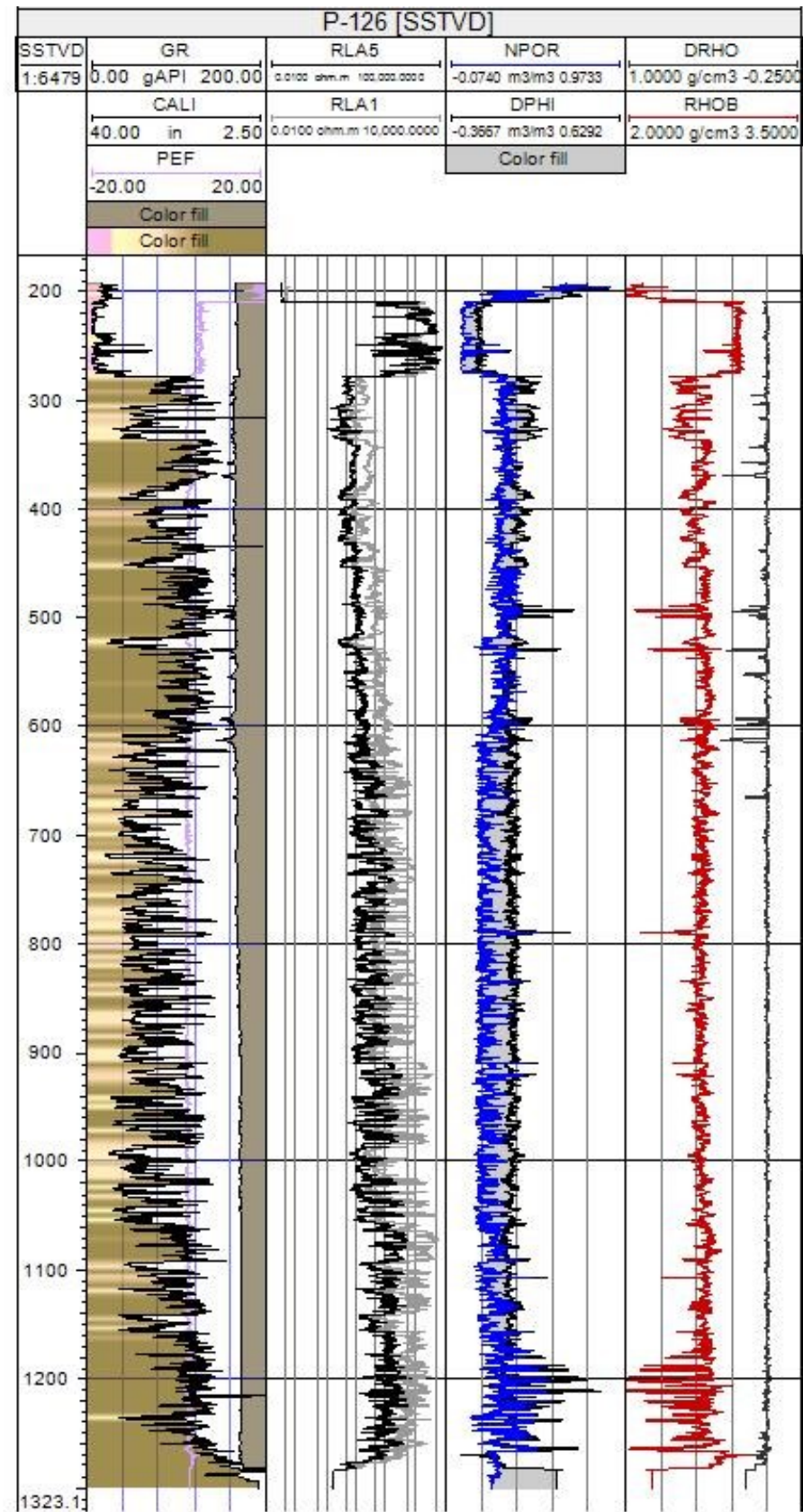
KB: 61.9m

TD: 1358.4m

Inventory of well logs



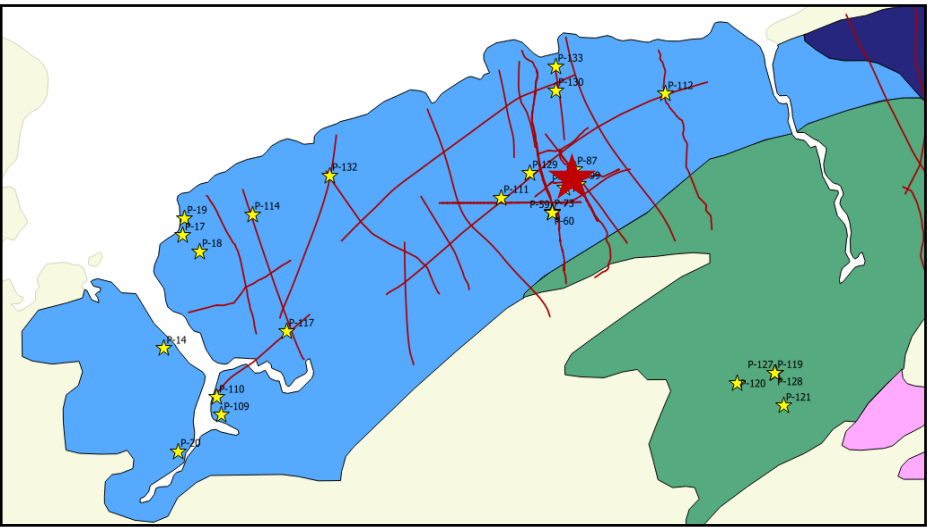
Composite logs



Nova Scotia Onshore Petroleum Atlas

Formation Top

Group/Formation	Top (m)
Windsor Group	10
Basal Anhydrite	NP
Cheverie Formation	341.5
Horton Bluff Formation	669.0
Meguma	1329.0



Composite logs

Well ID: P-128

Well Name: Morgan

Well Type: Vertical well

Spud Date: Sep. 2007

Status: Plugged and Abandoned

Operator: Forent Energy Ltd

Core/Cutting: None

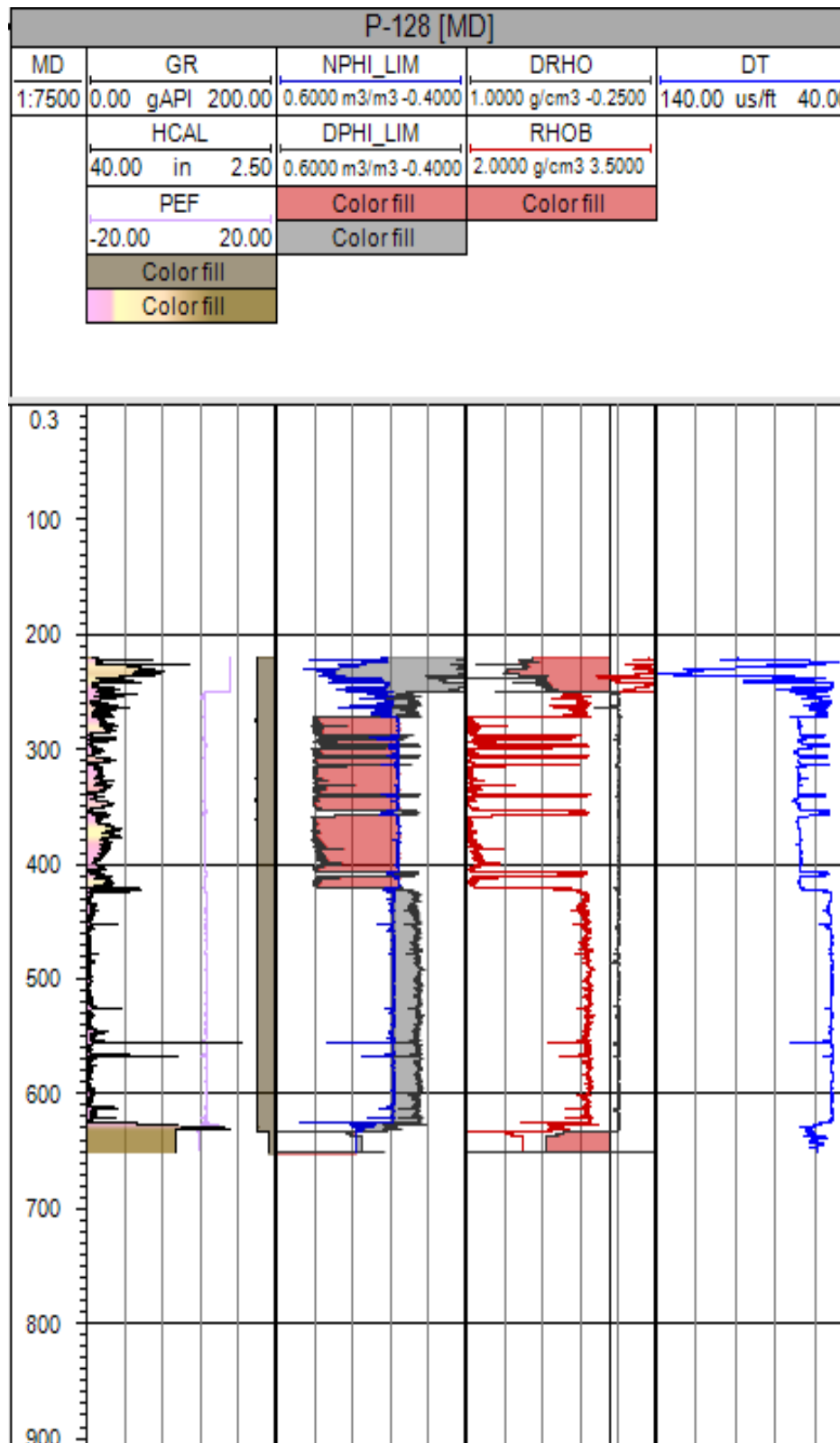
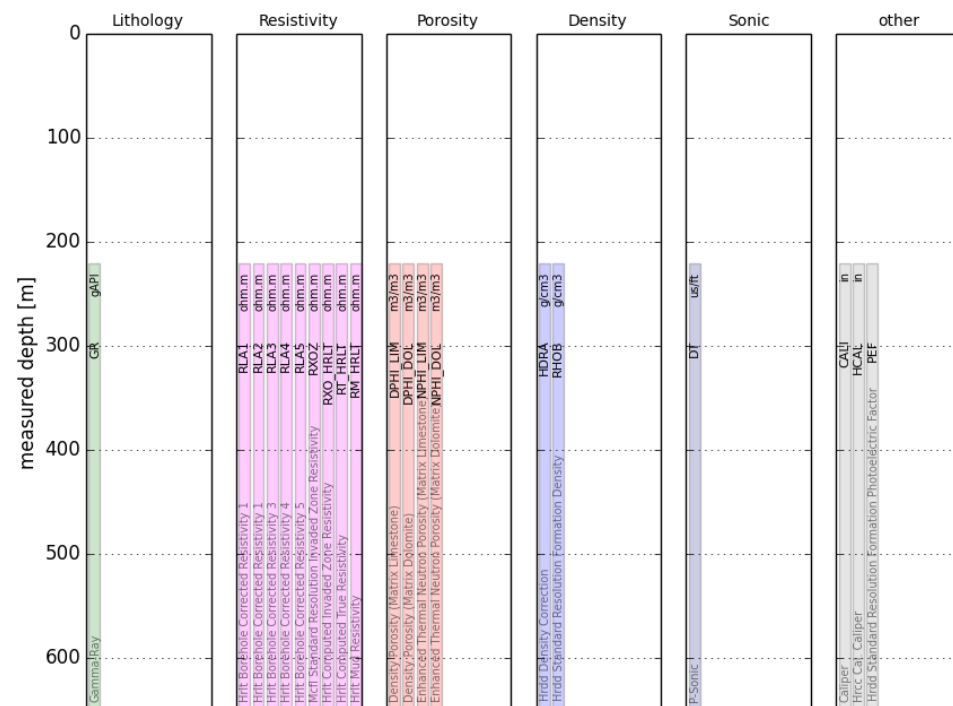
Surface Location: 463044(Easting); 4988497 (Northing)

Coordinate Reference System: NAD 83/UTM Zone 20

KB: 47m

TD: 655m

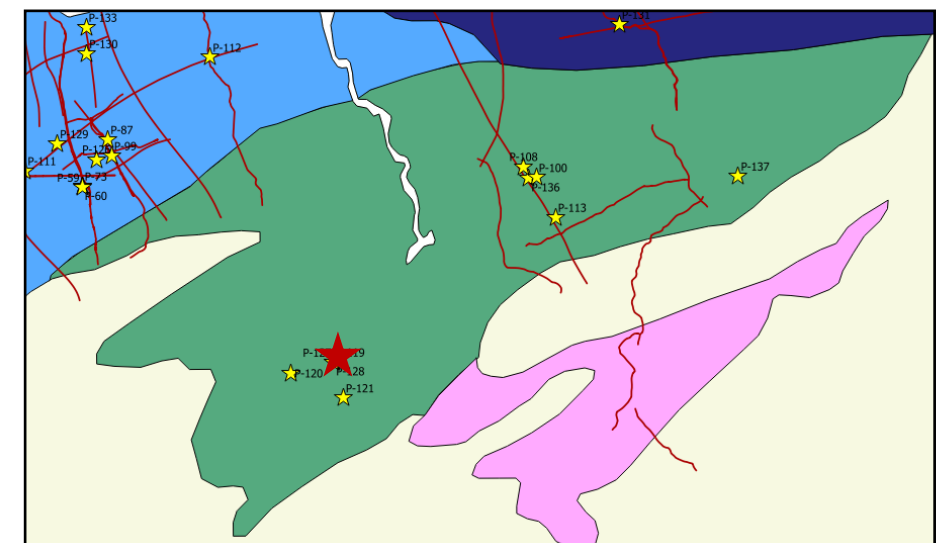
Inventory of well logs



Nova Scotia Onshore Petroleum Atlas

Formation Top

Group/Formation	Top (m)
Stewiacke Formation (salt)	270.5
Basal Anhydrite	422.5
Gays River Formation	665



Composite logs

Well ID: P-129

Well Name: Kennetcook #2

Well Type: Vertical well

Spud Date: Sep. 2007

Status: Suspended

Operator: Elmworth Energy Corp

Core/Cutting: core 1-18 & 0-1935m (cutting)

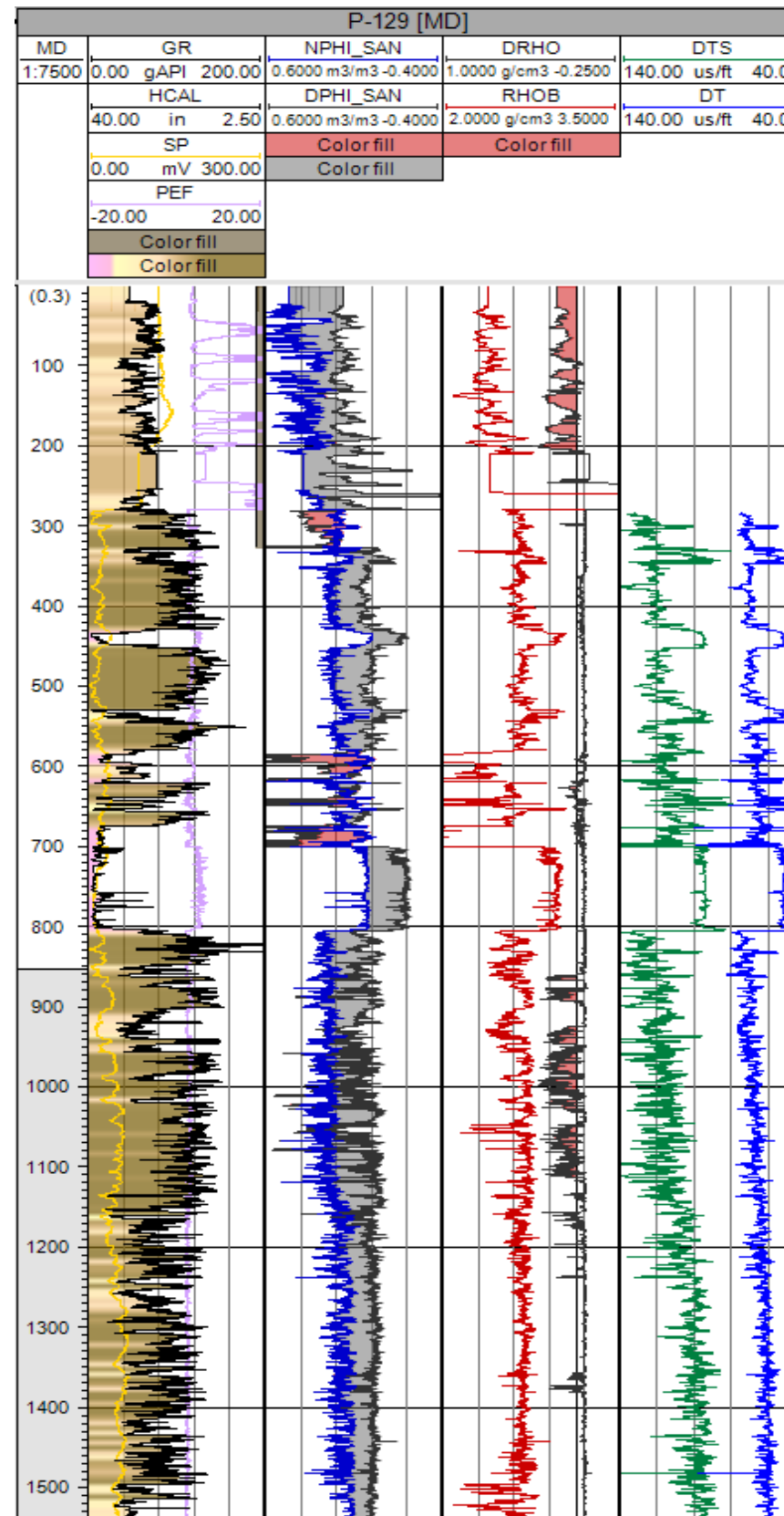
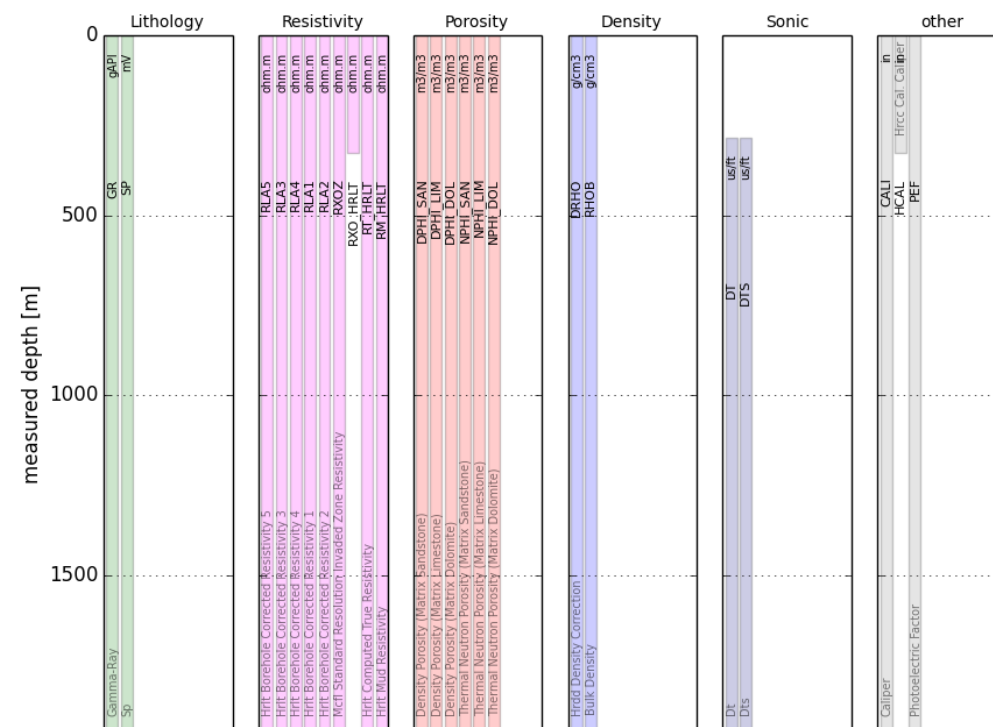
Surface Location: 440571 (Easting); 5006503 (Northing)

Coordinate Reference System: NAD 83/UTM Zone 20

KB: 94.8m

TD: 1935m

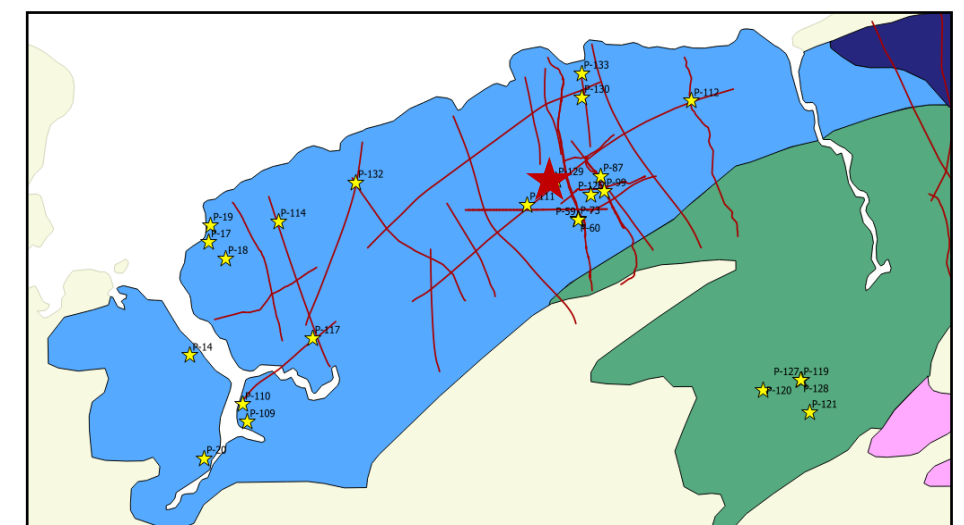
Inventory of well logs



Nova Scotia Onshore Petroleum Atlas

Formation Top

Group/Formation	Top (m)
Windsor Group	10
Basal Anhydrite	802.5
Cheverie	805.5
Horton Bluff	1139.5
Meguma	1904.5



Composite logs

Well ID: P-130

Well Name: N-14-A/11-E-5

Well Type: Vertical well

Spud Date: Jul. 2008

Status: Suspended

Operator: Elmworth Energy Corporation

Core/Cutting: 1769-1787m(core)& 0-2618m (cutting)

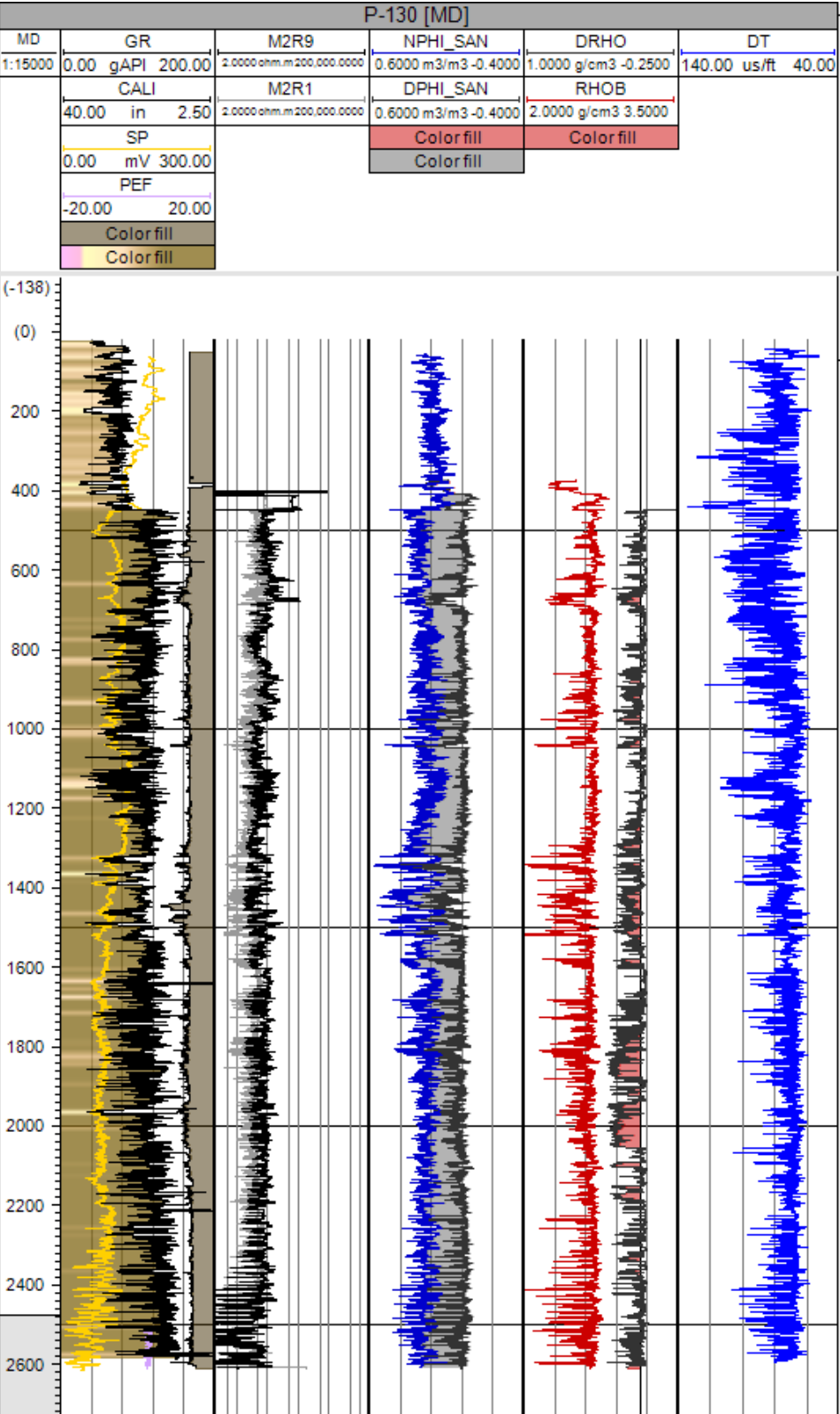
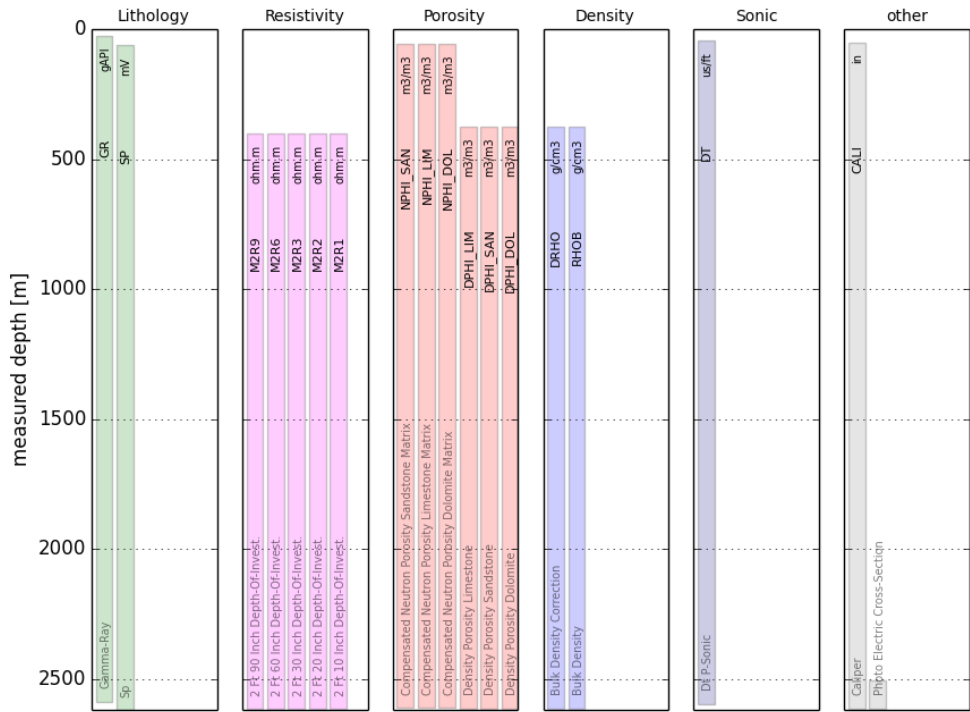
Surface Location: 443038 (Easting); 5013820 (Northing)

Coordinate Reference System: NAD 83/UTM Zone 20

KB: 73.22m

TD: 2618m

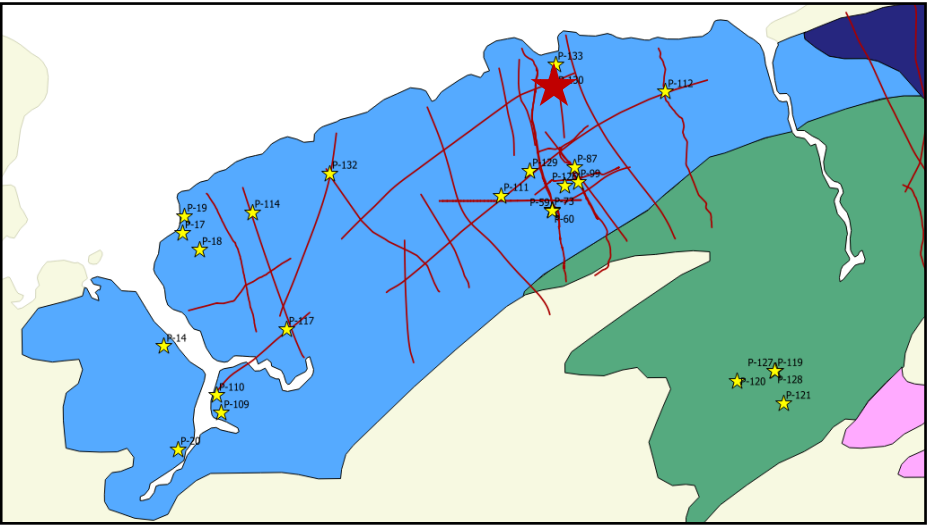
Inventory of well logs



Nova Scotia Onshore Petroleum Atlas

Formation Top

Group/Formation	Top (m)
Windsor Group	NP
Cheverie Formation	NP
Fault 1	805.5
Horton Bluff Formation	1139.5
Fault 2	1490.0
Organic Rich Shales	NP
Meguma	NP



Composite logs

Well ID: P-131

Well Name: Camden 100/G-40-A/11-E-6

Well Type: Vertical well

Spud Date: Aug. 2008

Status: Plugged and Abandoned

Operator: Forent Energy Ltd

Core/Cutting: 0-1464m (core1)

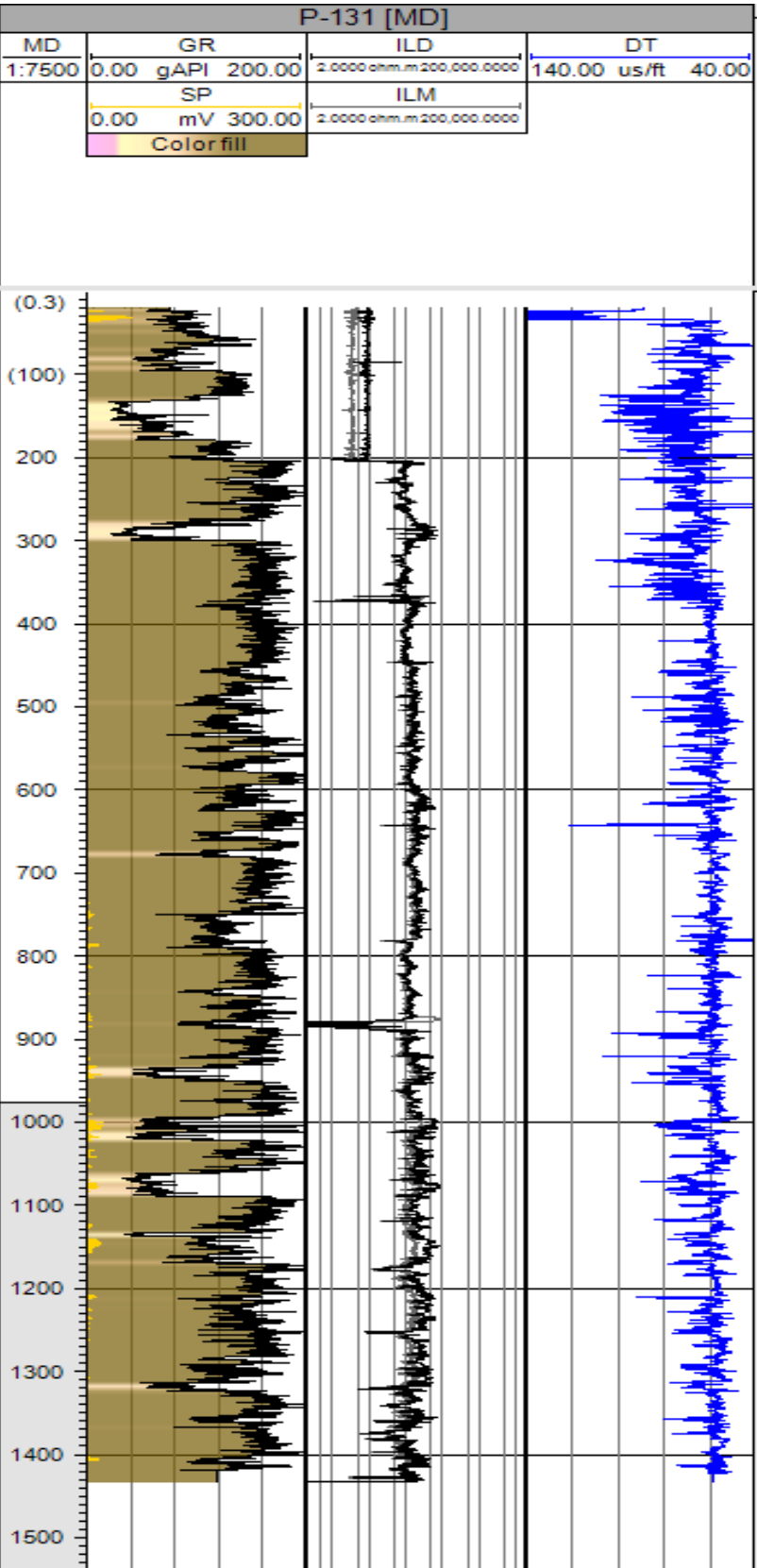
Surface Location: 486531 (Easting); 5015962 (Northing)

Coordinate Reference System: NAD 83/UTM Zone 20

KB: 190m

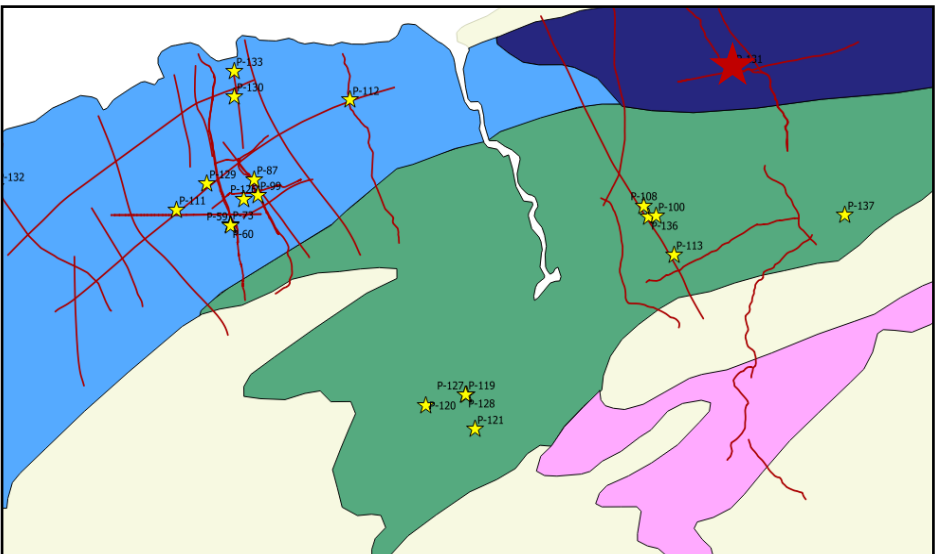
TD: 1464m

Inventory of well logs



Nova Scotia Onshore Petroleum Atlas

Formation Top

[illegible]

Composite logs

Well ID: P-132

Well Name: O-61-C/11-E-4

Well Type: Vertical well

Spud Date: Aug. 2008

Status: Suspended

Operator: Elmworth Energy Corporation

Core/Cutting: 0-2995m (cutting)

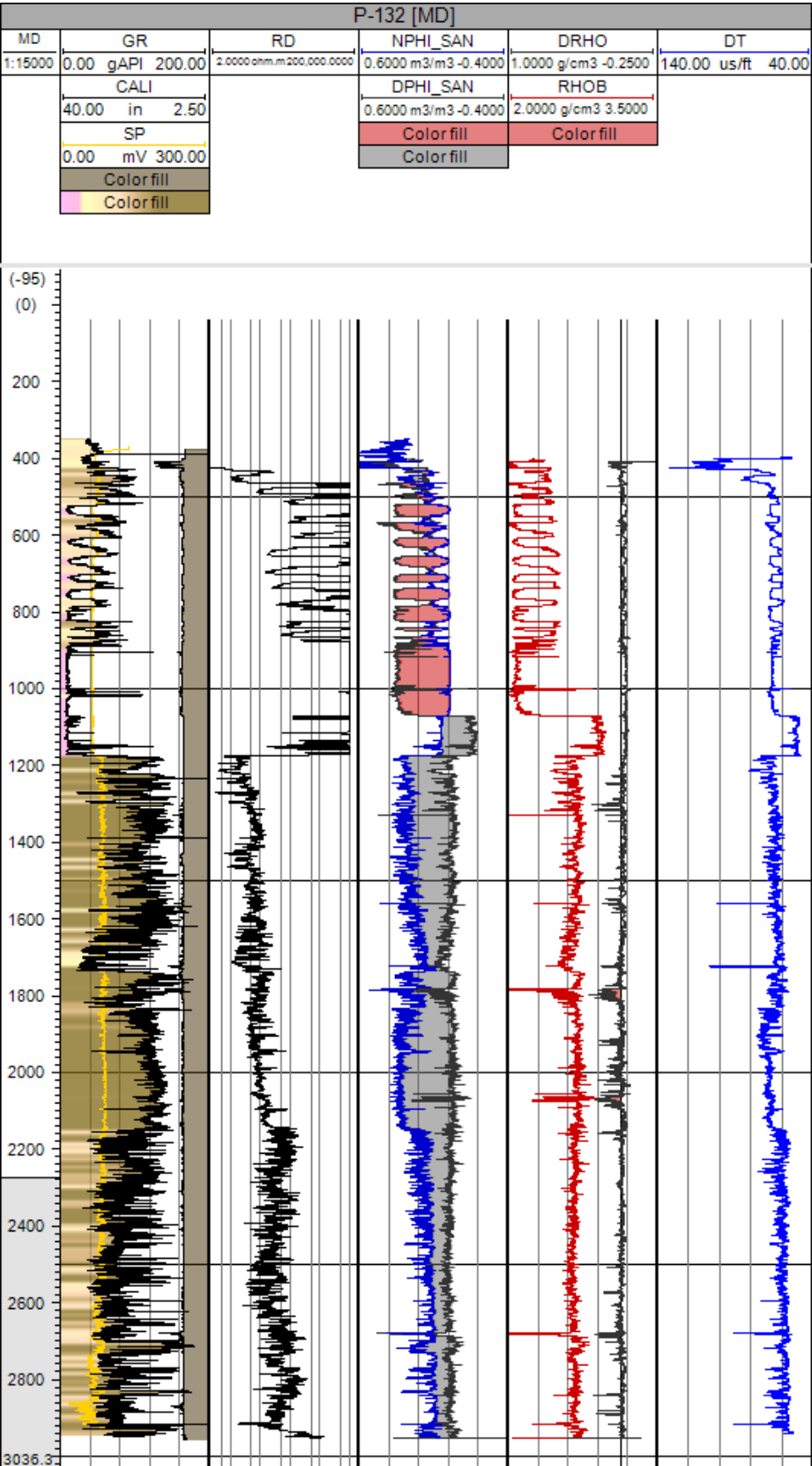
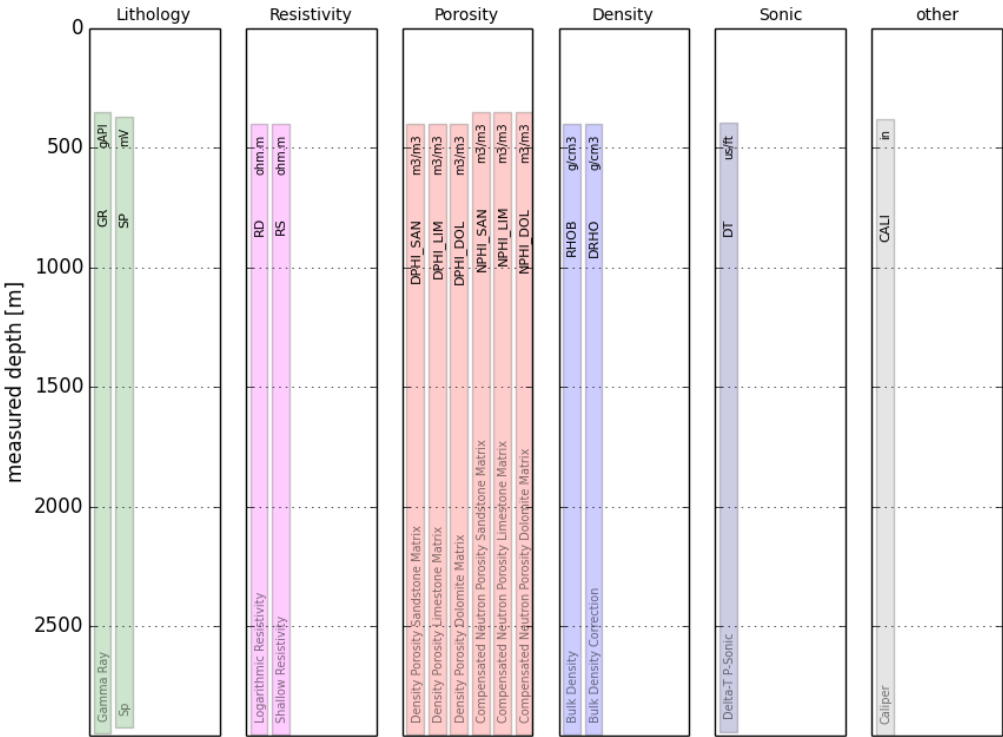
Surface Location: 422123 (Easting); 5006480 (Northing)

Coordinate Reference System: NAD 83/UTM Zone 20

KB: 66m

TD: 2955m

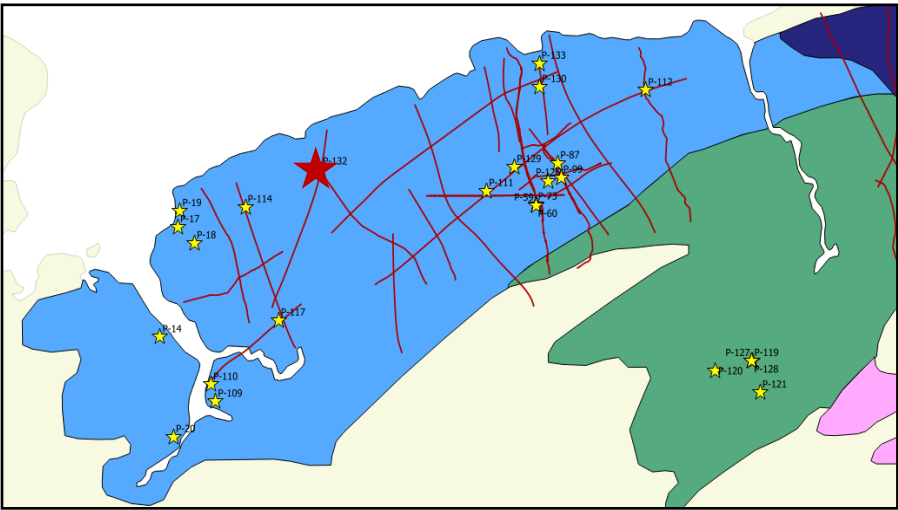
Inventory of well logs



Nova Scotia Onshore Petroleum Atlas

Formation Top

Group/Formation	Top (m)
Lower Windsor Group	485.0
Basal Salt	922.5
Gays River Formation	1171.5
Cheverie Formation	1174.0
Horton Bluff Formation	1740.0
Organic Rich Shales	NP
Meguma	NP



Well ID: P-133

Well Name: E-38-A/11-E-5

Well Type: Vertical well

Spud Date: Oct. 2008

Status: Suspended

Operator: Elmworth Energy Corporation

Core/Cutting: 0-1726m (cutting)

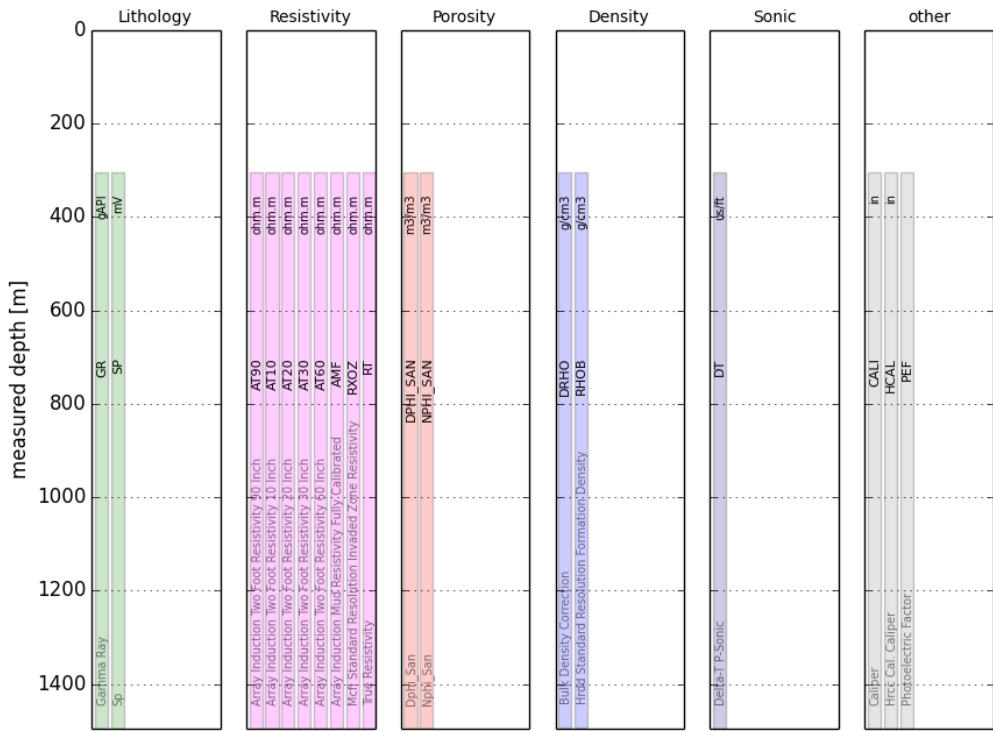
Surface Location: 443001 (Easting); 5015963 (Northing)

Coordinate Reference System: NAD 83/UTM Zone 20

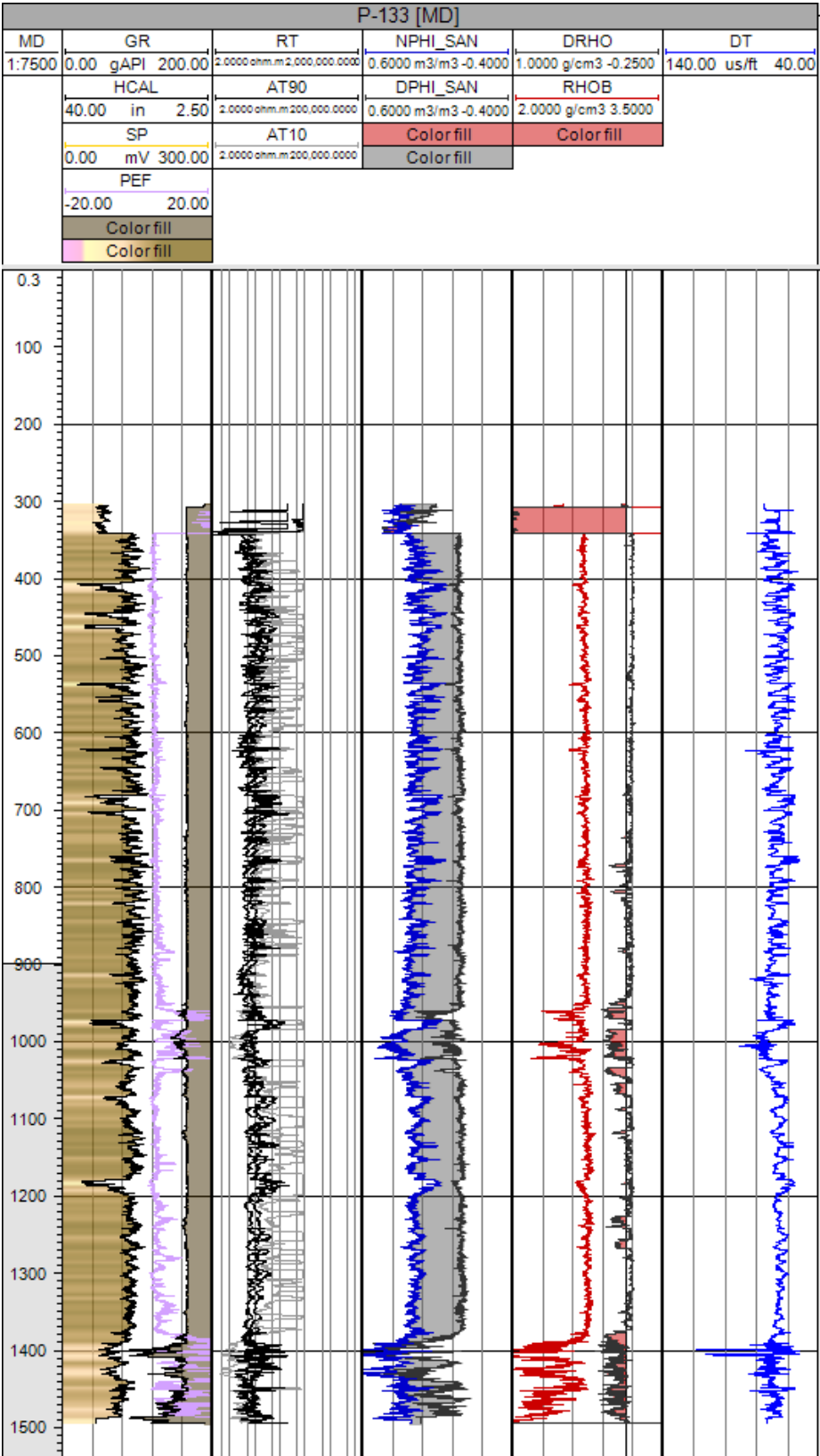
KB: 51m

TD: 1727m

Inventory of well logs



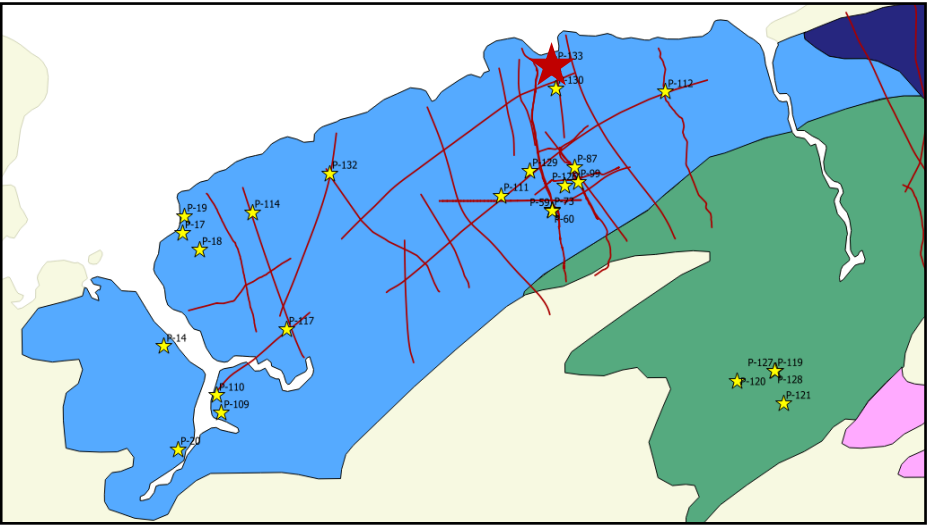
Composite logs



Nova Scotia Onshore Petroleum Atlas

Formation Top

Formation	Top (m)
Surface Casing Point	340.5
Horton Bluff Formation	405.0



Composite logs

Well ID: P-136

Well Name: Forent Alton #1 E-49-C/ 11-E-03

Well Type: Vertical well

Spud Date: Feb. 2012

Status: Plugged and Abandoned

Operator: Forent Energy Ltd

Core/Cutting: 5-996m (cutting)

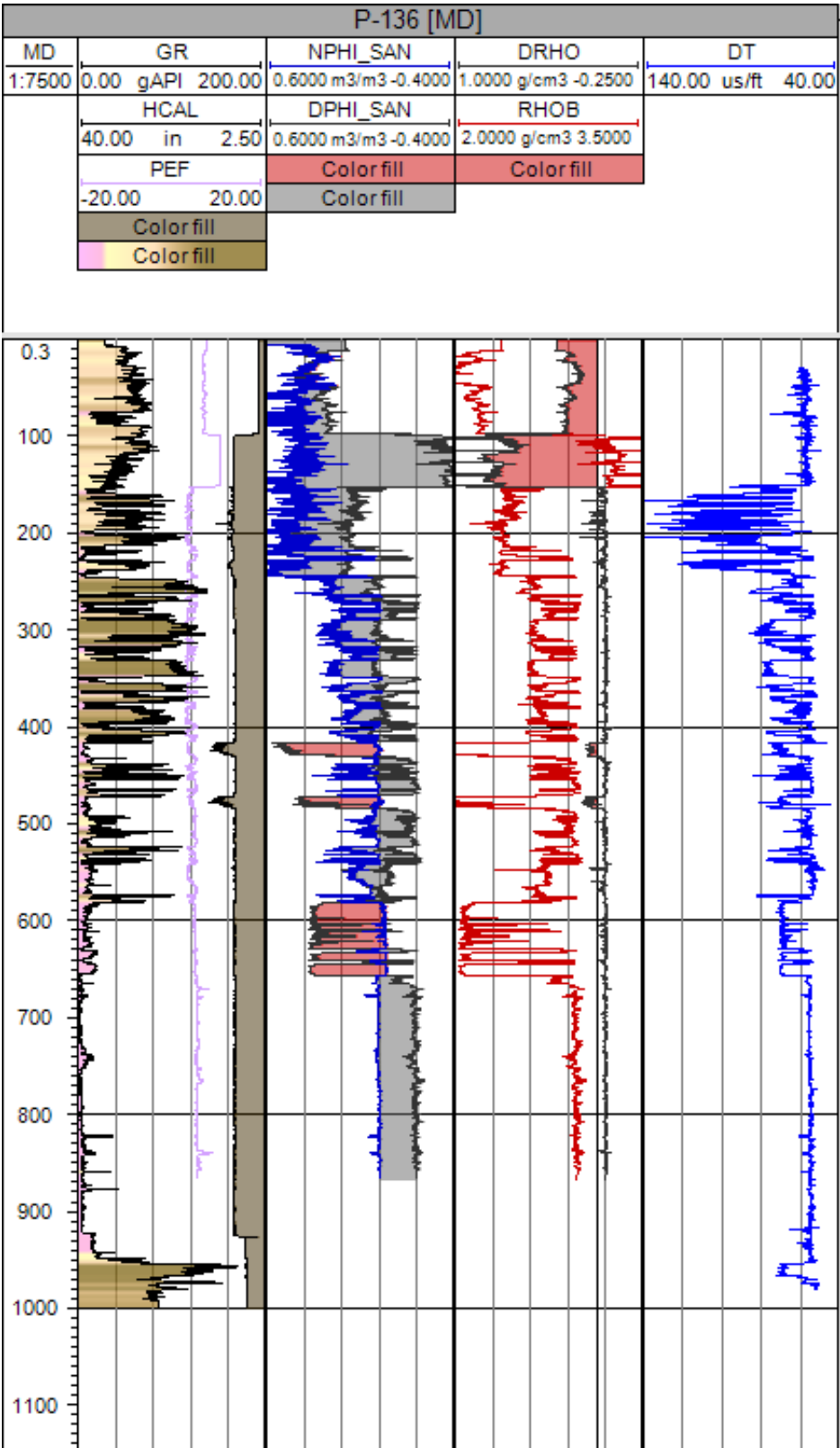
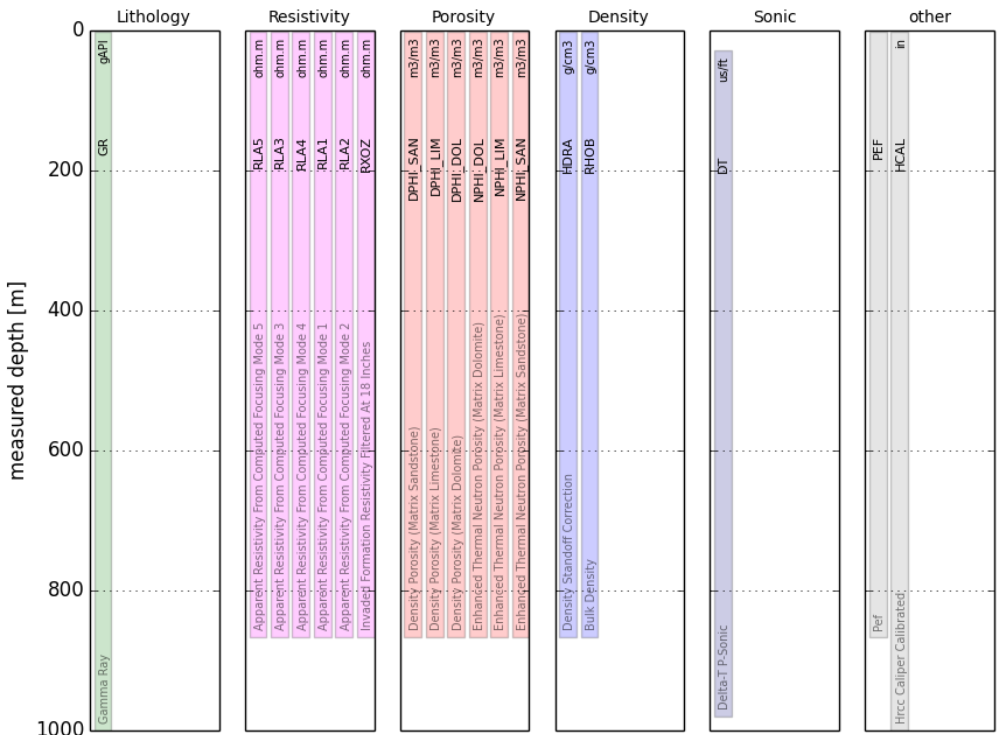
Surface Location: 479105 (Easting); 5003441 (Northing)

Coordinate Reference System: NAD 83/UTM Zone 20

KB: 40.23m

TD: 996m

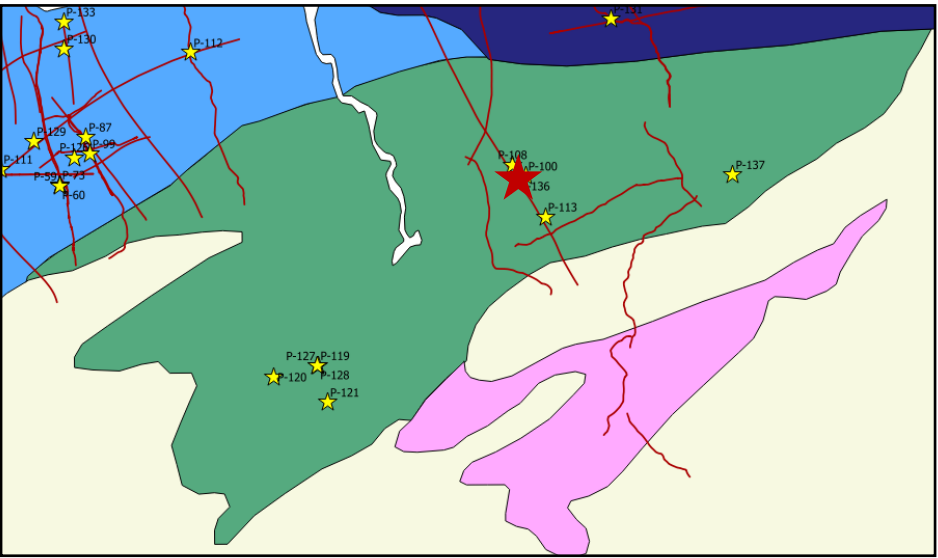
Inventory of well logs



Nova Scotia Onshore Petroleum Atlas

Formation Top*

Group/Formation	Top (m)
Stewiacke Formation	374.6
Carrolls Corner Formation	616
Macumber Formation	881
Horton Group	911.6



Composite logs

Well ID: P-137

Well Name: Forent South Branch #1 K-70-D/11-E-03

Well Type: Vertical well

Spud Date: Apr. 2012

Status: Plugged and Abandoned

Operator: Forent Energy Ltd

Core/Cutting: 0-784m (cutting)

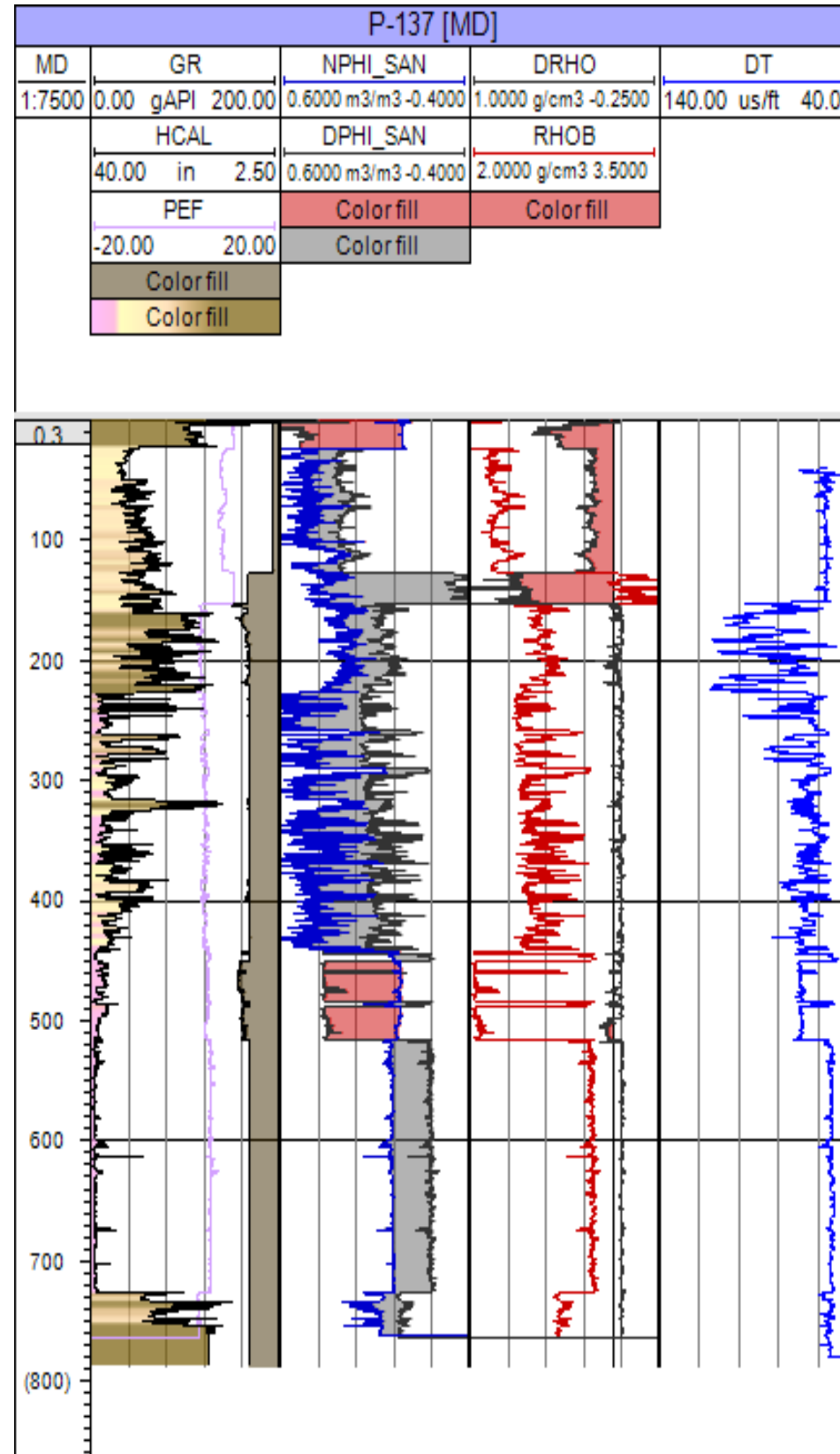
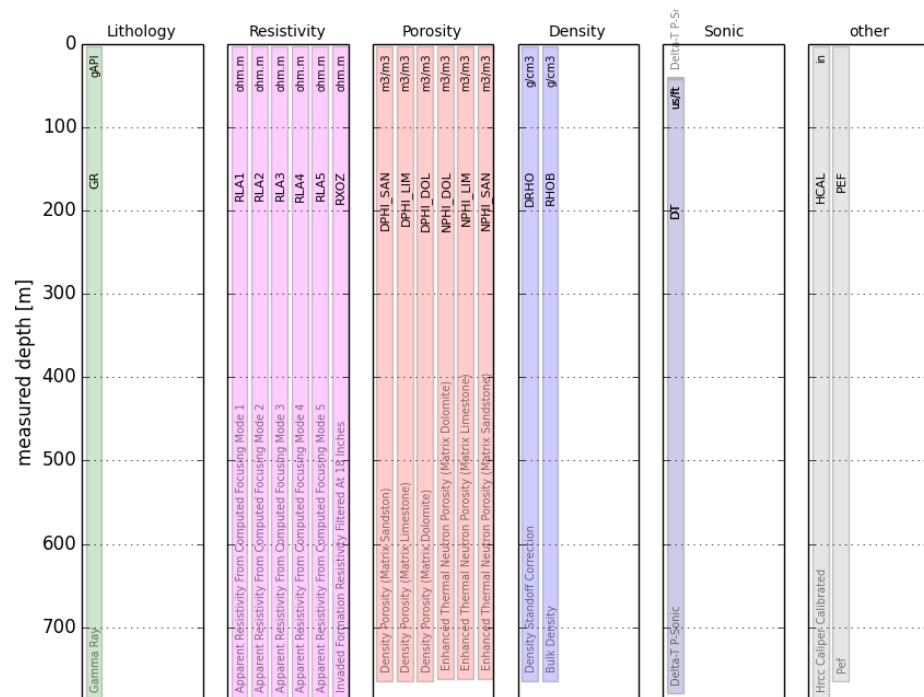
Surface Location: 496239 (Easting); 5003586 (Northing)

Coordinate Reference System: NAD 83/UTM Zone 20

KB: 55.9m

TD: 784m

Inventory of well logs



Nova Scotia Onshore Petroleum Atlas

Formation Top

Group/Formation	Top (m)
MacDonald Road Formation	240.5
Stewiacke Formation	455
Carrolls Corner Formation	522.5
Macumber Formation	735.0
Meguma	738

